

THREAD ROLL CONVERSION GUIDE

FOR MAJOR MANUFACTURERS

Brand: FETTE ATTACHMENTS



AXIAL

| | | |
|-------------|---|----------|
| F-Series | → | G-Series |
| FU-Series | → | G-Series |
| F-RN-Series | → | G-Series |
| K-Series | → | G-Series |



TANGENTIAL

| | | |
|----------|---|-------------------------------|
| T-Series | → | T12, T16, T18, T20, T22 |
|----------|---|-------------------------------|



RADIAL

| | | |
|----------|---|-----------------------|
| E-Series | → | E10, E13, E16, E23 |
|----------|---|-----------------------|

TANGENTIAL

| | | |
|----------|---|-----------------------|
| C-Series | → | C10, C16, C24, C36 |
|----------|---|-----------------------|

CJWinter is an
AS9100 and
ISO 9001:2008

certified company manufacturing the premier line of thread rolling attachments, thread rolls, specialty dies and tooling for multi-spindle and CNC machines. We ship to customers internationally and provide the highest level of quality as well as quick turnaround times.



Brand: REED



OVERHUNG DIE HOLDERS (Keyway)

| | |
|--------|--------|
| R 10 C | R 30 C |
| R 20 C | R 40 C |



Style/Model:

| | | |
|-----------------|---|-----|
| B-5 | → | B05 |
| B-8 | → | B08 |
| B-10 (500-G2A) | → | B10 |
| B-13 (750-G2A) | → | B13 |
| B-18 (1000-G2A) | → | B18 |
| B-36 | → | B36 |



DOUBLE SUPPORT DIE HOLDERS

| | | |
|-----------|-------|-------|
| (Splines) | R 1 B | R 4 B |
| | R 2 B | R 9 B |
| | R 3 B | |

THREAD ROLL CONVERSION GUIDE

FOR MAJOR MANUFACTURERS

Brand: LANDIS



Style/Model:

14GA → L14
18GA → L18
20GA → L20
22GA → L22
24GA → L24



Style/Model:

No. 3 1/2 → G70
No. 5 → G71
No. 7 → G72
No. 10 → G73

Brand: SALVO



Style/Model:

CBL → CBL
BBL → BBL
DBL → DBL

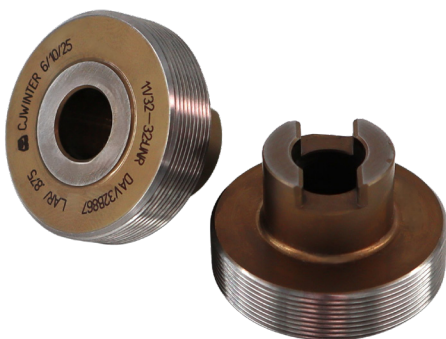
Brand: DETROIT



Style/Model:

76000 (0-375) → DE0
76100 (6-625) → DE1
76200 (10-750) → DE2
76300 (30-1000) → DE3
76400 (25-1125) → DE4

Brand: DAVENPORT



Style/Model:

1421-SA → DAV
1431-SA → DAV

**FOLLOW US FOR PRODUCT
VIDEOS & MORE!**



WEBSITE



YOUTUBE