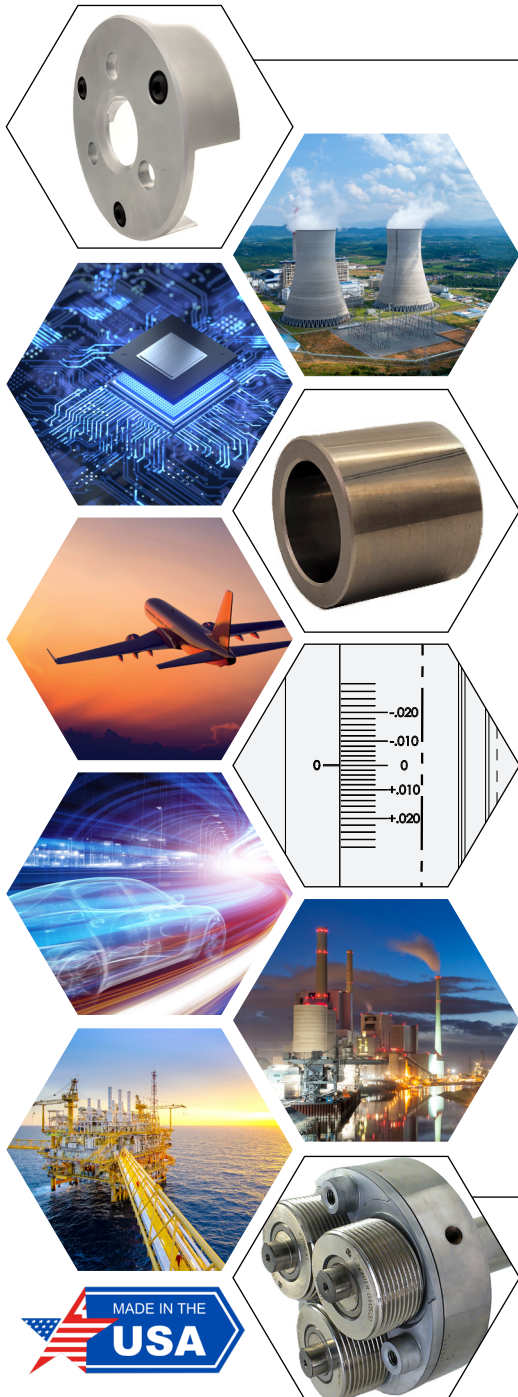


# ER & ES SERIES

## End Rolling Attachments For CNC Threading Applications



**CJWinter** expands their premier line of American-made End Rolling Attachments for thread rolling applications. The **CJWinter ER and ES SERIES** of End Rolling Attachments features an innovative design that provides high rigidity for longer tool life and better quality threads, in addition to superior thread roll protection.

### The CJWinter ER and ES SERIES Features:

#### One piece front plate enclosures:

- Provides superior roll protection from debris
- Fewer parts, increased rigidity

#### Carbide bushings as standard equipment on all attachments

#### Engraved scale allowing thread or spline pitch diameter adjustments in the machine

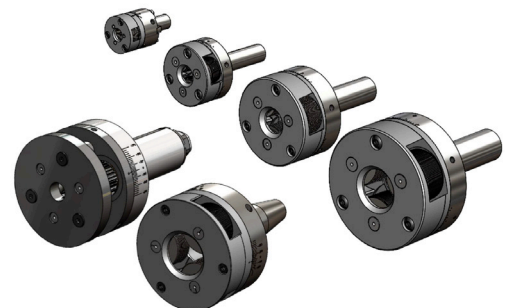
#### High-strength construction for longer tool life

- Extensive use of tool steel and custom heat treat on wear surfaces
- Special wear-resistant coating on all wear surfaces for smoother operation and extended life
- Reduced operating costs = more profits for you at no extra charge
- Carbide Bushings replace cumbersome needle bearings

#### Fine Adjust Mechanism

Engineered for speed and precision, the Fine Adjust Mechanism uses two opposing set screws to deliver fast, accurate pitch diameter adjustments — ensuring optimal performance with every use.

Compact sizes fit virtually any type of machine including CNC Turning and Milling Centers, Rotary Transfer, Swiss, Multi-Spindle, and many others.



**CJWINTER.COM**

**INDUSTRIES SERVED:** SEMICONDUCTOR • AUTOMOTIVE • AEROSPACE • CHEMICAL • OIL & GAS • POWER

Anything short of perfection wouldn't be good enough for our thread rolls. CJWinter's world-renowned thread roll manufacturing and design techniques provide longer thread life, higher repeatability and less runout. Standard and special size thread rolls are available for 5-day delivery and **are interchangeable for use with competitive end rolling attachments**.



Other features available with the **ER and ES SERIES** of End Rolling Attachments are high performance materials and coatings to increase product performance and tool life. Application/design review will be supplied at no charge when you provide a part print or specific roll geometry. Call us for information. You'll appreciate the attention we provide our customers every day, and see the difference in the quality of CJWinter products.

## Features & Advantages of CJWinter End Rolling Attachments



**Precision** — CJWinter ER and ES Series of attachments feature a rigid one-piece front plate for superior reliability and accuracy. With sealed pitch adjustment, fine-adjust screws, ultra-hard low-friction coatings, and fewer wear parts, they outperform the competition.

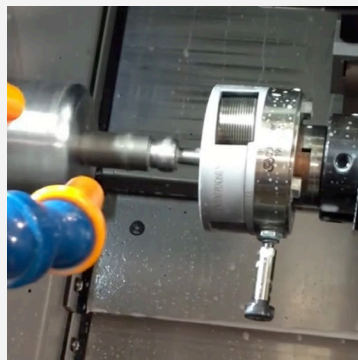
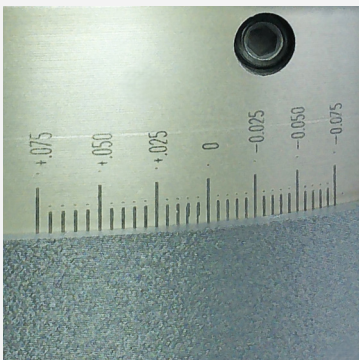
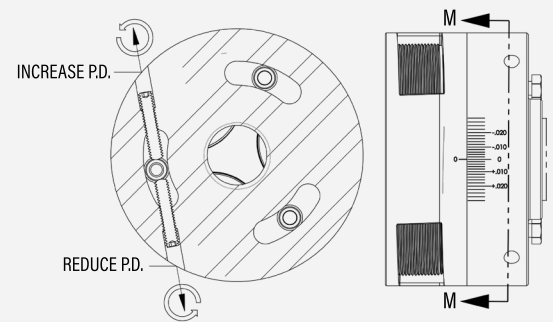
**One-Twist Adjustment** — Adjust all three rolls with a single twist after loosening just three bolts. This keeps rolls evenly loaded and perfectly concentric for better results. CJWinter attachments ensure smoother operation, reduced wear, and consistent part quality.

**Graduated Scale** — Adjustments to size are made while referencing a graduated scale on the side of the head. The scale is clearly labeled (+) and (-) enabling fine adjustments to be made with absolute confidence.

**Fine Adjust Mechanism** — Engineered for fast and precise setup, the Fine Adjust Mechanism uses two opposing set screws to deliver fast, accurate pitch diameter adjustments — ensuring optimal performance with every use.

**Wide Range of Sizes** — CJWinter End Rolling Attachments and their derivatives can accommodate a substantial range of sizes with optional variants and modifications the CJWinter catalog of end rolling heads is certain to meet your manufacturing needs.

**193 ES** — Special Heavy Duty Attachment excels with our robust **Roll-On Roll-Off technology**. With increased rigidity, both CAT40 / Ø1.50" shank options, and no reset failures, this attachment delivers high quality threads with minimal setup time and maximum reliability.

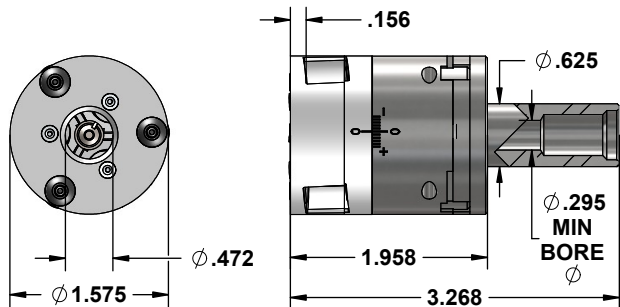


# ER/ES SERIES ATTACHMENT LINE-UP

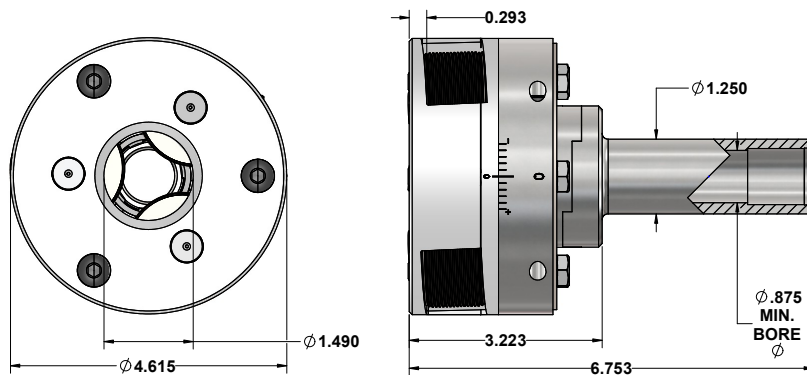


Scan for complete specs

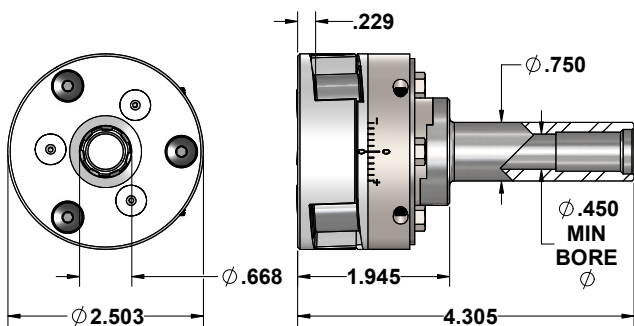
CJWinter  
**189 ER Attachment**



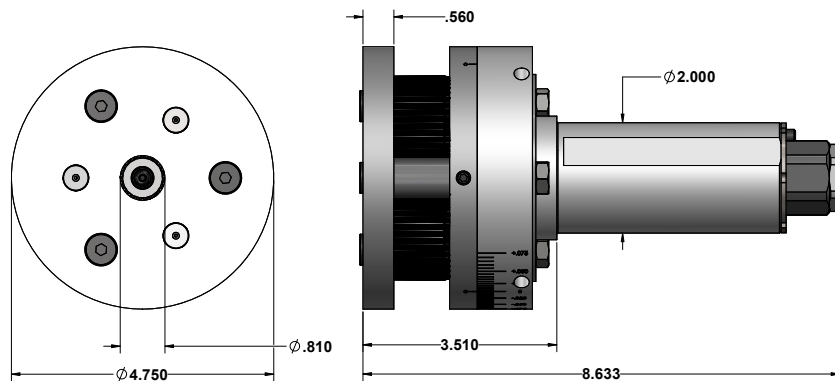
CJWinter  
**194 ER Attachment**



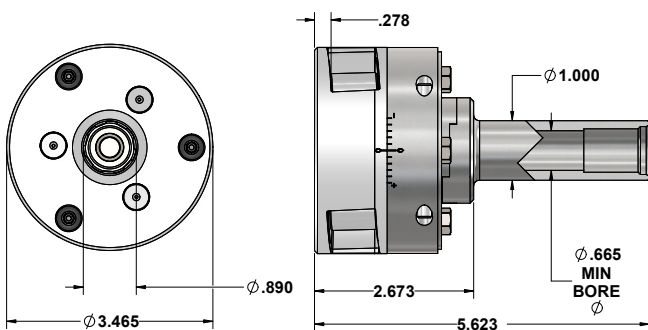
CJWinter  
**190 ER Attachment**



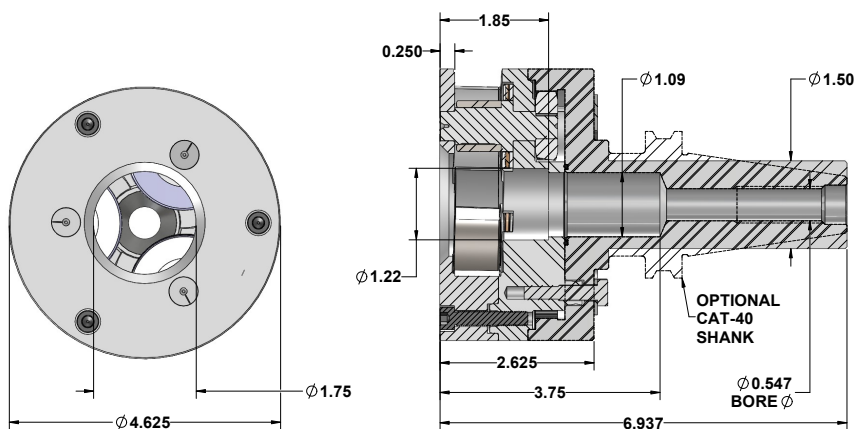
CJWinter  
**192 ES Attachment**  
Specialty Knurling Head



CJWinter  
**191 ER Attachment**



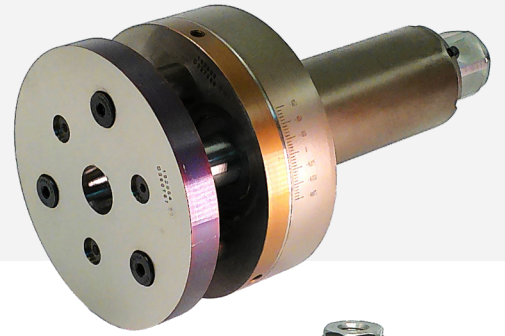
CJWinter  
**193 ES Attachment**  
Specialty Roll-on Roll-off Attachment



## Definition: Involute Knurl or Spline

# 192 ES SERIES

**Involute knurls** and **involute splines** are two names for the same type of feature. They are a series of ridges formed on the circumference of a cylinder, where the shape of each ridge is defined by the involute formulas of a gear tooth. They are primarily used as shaft connection devices to transmit torque to components that are pressed onto or over-molded the end of a shaft. The involute ridges transmit torque more effectively than a simple press into a round hole, and can orient features between the shaft and the pressed component.



## Reasons to Roll Involute Knurl Connections

Involute Knurl connections can be manufactured by a wide variety of means, including casting, forging, cutting, broaching, milling etc. However, none of these processes can match the speed at which rolling can form a knurl, the economy of the process, the convenience of performing the operation in a traditional metalworking lathe or mill without specialized equipment, nor the strength of the final product.

Knurl rolling typically occurs in 2 to 5 seconds. Time will naturally vary with the knurl length, and diameter, but in virtually all cases, rolling is an order of magnitude faster than conventional machining processes. Tooling cost per part is extremely competitive to all other processes, usually 5 to 10 times less expensive than the next closest option, which makes it perfect for high volume, low margin jobs.

Knurling can be completed on virtually any lathe, mill, or multi-spindle machine. No specialized equipment is required, and no secondary processes are required. For the most part, if you can machine the blank, you can knurl the part.

Knurl rolling is a cold-forming process, where material is displaced and formed into the final shape at room temperature. The material's grain structure is refined, and the grain boundaries are forced to flow smoothly past all root radii, rather than being cut. As a result, the final part is work-hardened into a tougher connection. The knurl tooth is more resistant to deformation and cracking, and can carry a higher load than a cut counterpart.



### Specialty 192 ES Series Attachment Capacity

Min and Max Bolt Circle (Same for both 1" and 2" wide rolls)	Max Roll OD
FCD Max: 2.456	2.000"
FCD Min: 2.396	
Plate Max Diameters	Part Major Diameter
Front Plate: .950*	0.625" to 1.000" Max**
Back Plate: .920	

 **CJWINTER**  
A Brinkman International Group, Inc. Company  
THREAD ROLLING SOLUTIONS



\* If bigger thrust washer may need to be modified

\*\* If part is not within the specified range, review application with CJWinter

Scan QR code for complete specs

# Sizing Charts

Standard Sizing Chart					189	190	191	193	194
Thread Size	Pitch Diameter (3A)								
		Max	Min						
# 6 - 40	0.1218	0.1198							
# 8 - 32	0.1437	0.1415							
# 8 - 36	0.1460	0.1439							
# 10 - 24	0.1629	0.1604							
# 10 - 32	0.1697	0.1674							
# 12 - 24	0.1889	0.1863							
# 12 - 28	0.1928	0.1904							
# 12 - 32	0.1957	0.1933							
1/4 - 20	0.2175	0.2147							
1/4 - 28	0.2268	0.2243							
1/4 - 32	0.2297	0.2273							
5/16 - 18	0.2764	0.2734							
5/16 - 20	0.2800	0.2770							
5/16 - 24	0.2854	0.2827							
5/16 - 28	0.2893	0.2867							
5/16 - 32	0.2922	0.2898							
3/8 - 16	0.3344	0.3311							
3/8 - 20	0.3425	0.3394							
3/8 - 24	0.3479	0.3450							
7/16 - 14	0.3911	0.3876		L					
7/16 - 16	0.3969	0.3935							
7/16 - 18	0.4001	0.3958							
7/16 - 20	0.4050	0.4019		L					
1/2 - 13	0.4500	0.4463							
1/2 - 16	0.4594	0.4559							
1/2 - 18	0.4626	0.4582							
1/2 - 20	0.4675	0.4643							
1/2 - 28	0.4768	0.4740							
1/2 - 32	0.4797	0.4771							
9/16 - 12	0.5084	0.5045							
9/16 - 14	0.5146	0.5096							
9/16 - 16	0.5219	0.5184							
9/16 - 18	0.5264	0.5230							
9/16 - 20	0.5300	0.5268							
9/16 - 24	0.5625	0.5553							
9/16 - 28	0.5625	0.5560							
9/16 - 32	0.5625	0.5565							
5/8 - 11	0.5660	0.5619							
5/8 - 12	0.5709	0.5668							
5/8 - 16	0.5844	0.5808							
5/8 - 18	0.5889	0.5854							
5/8 - 20	0.6250	0.6169							
5/8 - 24	0.6250	0.6178							
5/8 - 28	0.6250	0.6185							
5/8 - 32	0.6047	0.6020							
11/16 - 12	0.6334	0.6293							
11/16 - 16	0.6469	0.6433							
11/16 - 20	0.6862	0.6781							
11/16 - 24	0.6875	0.6803							
11/16 - 28	0.6875	0.6810							
3/4 - 10	0.6832	0.6773							
3/4 - 12	0.6959	0.6918							
3/4 - 16	0.7079	0.7029							
13/16 - 12	0.7584	0.7543							
13/16 - 16	0.8125	0.8031							
13/16 - 20	0.7800	0.7764							
13/16 - 28	0.8125	0.8060							
7/8 - 9	0.8009	0.7946							
7/8 - 12	0.8750	0.8636							
7/8 - 14	0.8270	0.8216							
7/8 - 16	0.8750	0.8656							
7/8 - 20	0.8750	0.8669							
7/8 - 28	0.8750	0.8685							
15/16 - 12	0.9375	0.9261							
15/16 - 16	0.9375	0.9281							
15/16 - 20	0.9375	0.9294							
1 - 12	1.0000	0.9886							
1 - 16	1.0000	0.9906							
1 - 20	0.9675	0.9641							
1 1/16 - 12	1.0625	1.0511							
1 1/16 - 16	1.0625	1.0531							
1 1/16 - 18	1.0625	1.0538							
1 1/16 - 20	1.0625	1.0544							
1 1/8 - 16	1.1250	1.1156							
1 1/8 - 18	1.1250	1.1163							
1 1/8 - 20	1.1250	1.1169							
1 3/16 - 12	1.1875	1.1761							
1 3/16 - 16	1.1469	1.1431							
1 3/16 - 18	1.1875	1.1788							
1 3/16 - 20	1.1875	1.1794							

L - Limited Length; Consult CJWinter Engineer

Metric Sizing Chart					189	190	191	193	194
Thread Size	Pitch Diameter (6g)								
		Max	Min						
M 3.5 x 0.5	3.155	3.080							
M 3.5 x 0.6	3.089	3.004							
M 4 x 0.5	3.655	3.580							
M 4 x 0.7	3.523	3.433							
M 4 x 0.75	3.491	3.391							
M 4.5 x 0.5	4.155	4.080							
M 4.5 x 0.75	3.991	3.901							
M 5 x 0.75	4.491	4.391							
M 5 x 0.8	4.456	4.361							
M 5 x 0.9	4.390	4.287							
M 5.5 x 0.75	4.991	4.891							
M 5.5 x 0.9	4.890	4.787							
M 6 x 0.75	5.491	5.391							
M 6 x 1	5.324	5.212							
M 7 x 0.75	6.491	6.391							
M 7 x 1	6.324	6.212							
M 8 x 0.75	7.513	7.453							
M 8 x 1	7.324	7.212							
M 8 x 1.25	7.160	7.042							
M 9 x 1	8.324	8.212							
M 9 x 1.25	8.160	8.042							
M 10 x 1	9.324	9.212							
M 10 x 1.25	9.160	9.042							
M 10 x 1.5	8.994	8.862							
M 11 x 1.5	10.026	9.936							
M 12 x 0.5	11.655	11.580							
M 12 x 0.75	11.491	11.391							
M 12 x 1	11.974	11.794							
M 12 x 1.25	11.160	11.028							
M 12 x 1.5	10.994	10.854							
M 12 x 1.75	10.863	10.768							
M 13 x 0.75	12.491	12.391							
M 13 x 1	12.324	12.206							
M 13 x 1.5	11.994	11.854							
M 14 x 0.75	13.491	13.391							
M 14 x 1	13.324	13.206							
M 14 x 1.5	12.994	12.854							
M 14 x 2	12.663	12.503							
M 15 x 0.75	14.491	14.391							
M 15 x 1	14.325	14.206							
M 15 x 1.5	13.994	13.854							
M 16 x 1	15.324	15.206							
M 16 x 1.5	14.994	14.854							
M 16 x 2	14.663	14.503							
M 17 x 1	16.974	16.794							
M 18 x 1	17.324	17.206							
M 18 x 1.5	16.994	16.854							
M 20 x 1	19.324	19.206							
M 20 x 1.5	18.994	18.854							
M 20 x 2	18.663	18.503							
M 20 x 2.5	19.623	19.588							
M 22 x 1.5	20.994	20.854							
M 22 x 2	20.663	20.503							
M 22 x 2.5	21.623	21.958							
M 24 x 1.5	22.994	22.854							
M 24 x 2	22.663	22.493							
M 25 x 1.5	23.994	23.844							
M 27 x 1.5	25.994	25.854							
M 27 x 2	25.663	25.493							
M 30 x 1.5	28.994	28.844							
M 30 x 2	28.663	28.493							

L - Limited Length; Consult CJWinter Engineer

NPT Pipe Sizing Chart				189	190	191	193	194
Thread Size	NPT Pitch							
		Max	Min					
NPT 1/16 - 27	0.2712	0.1171						
NPT 1/8 - 27	0.3635	0.1632						
NPT 1/4 - 18	0.4774	0.2109						
NPT 3/8 - 18	0.6120	0.2782						
NPT 1/2 - 14	0.7584	0.3435						
NPT 3/4 - 14	0.9677	0.4481						

Consult CJWinter for additional sizes.

# Thread Rolling Tips & Information

## Selecting Thread Rolls

The thread rolls used on the ER Series of Attachments have an annular groove geometry. Rolls are mounted and tilted to the approximate helix angle in the attachment. This allows for the production of the proper thread geometry on parts during the thread rolling process.

CJWinter Precision Thread Rolls can be supplied with a .6L, 1L or 2L lead. This lead determines how close the attachment can get to the shoulder of the part.

- A .6L lead can roll very close to a shoulder, but tends to be more aggressive and sacrifices thread roll life.
- A 1L lead is the most popular lead as it provides a good balance between thread roll life and being able to get somewhat close to a shoulder.
- A 2L lead can't roll very close to a shoulder, but tends to be less aggressive and provides for the best thread roll life.

## Reversible Rolls

CJWinter ER Series Thread Rolls (as well as the master pinion on the 192 Series) are fully reversible. This allows for an entirely "new" rolling die simply with the inversion of the thread rolls or knurl rolls when one worksurface wears out. This enables each set of CJWinter Thread Rolls to provide twice the life of a set of comparable roll dies.



## Attachment Options

Contact your CJWinter Sales Representative for more information on customized thread rolling and attachment solutions for your industry!

CJWinter Attachment Options		189	190	191	192	193	194
Part Desc.	Quick Install						
Lockup Plate		189040	190028	191037			194039
Alternate Shank Sizes		.	.	.	.	.	.
- CONSULT FACTORY							

**CJWinter is the industry leader in thread rolling solutions – let us be your first choice when it comes to your material forming needs!**



**THREAD ROLLING SOLUTIONS**

**1-800-288-ROLL**

CJWinter.com



167 Ames Street, Rochester NY 14611 USA

Phone: 585-429-5000

Toll Free: 800-288-7655 (ROLL)

Email: info@cjwinter.com

Website: www.cjwinter.com