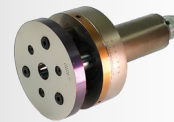


ATTACHMENTS

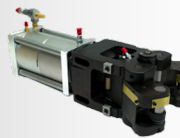
CJWinter is the industry leader in thread rolling solutions — let us be your first choice for your material forming needs!



ER: The ER Series of End Rolling Attachments feature a high performance and innovative design that provides high rigidity for longer tool life, better quality threads, and superior thread roll protection.



192 ES: The 192 ES Precision Involute Knurl/Spline Rolling Attachment produces high-quality involute knurls and splines on standard lathes or mills, eliminating specialized equipment and secondary operations. Its cold-forming process creates stronger splines than cutting, with cycle times under 5 seconds—far faster and more economical than traditional machining or broaching. The 192 ES Series also rolls stainless steel efficiently, avoiding excessive tool wear common with cutting processes.



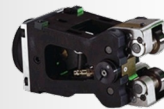
PNEUMATIC: CJWinter's Pneumatic Attachments include an exclusive air powered radial infeed design which virtually eliminates part deflection and flaking. A single cam can be used throughout the entire size range, thread rolling pressure is equalized and side pressure is eliminated. Pitch diameter can even be adjusted while the machine is running.



CNC/TANGENTIAL: (NEW/COMING SOON) The T1800 Tangential Attachment is a compact, high-precision solution for producing external threads. Designed for CNC Lathes, Turning Centers and Multispindle Machines, it delivers chip-free thread rolling to improve thread strength, surface finish, and dimensional consistency.



Engineered for easy setup, stable rolling forces, and repeatable performance, the T1800 is ideal for high-volume production. It integrates seamlessly into existing machine configurations and supports a wide range of thread sizes and materials.



CJWinter offers superior products for CNC applications. Our CNC attachment technology is ready to roll high quality and reliable threads for precision-critical applications. Our Tangential Attachments use many of the same features as the pneumatic attachments and easily convert to air powered. Tangential Attachments enable fast setup with no tools required for pitch adjustment, solid carbide roll pins, and no adapter required for many machines.



ROTARY RADIAL: The 234 Rotary Radial Attachment is specifically designed for close to shoulder knurling on rotary transfer machines with enhanced precision and complete control.



OUTBOARD ATTACHMENTS: The 145 OB and 165 OB Outboard Style Attachments provide the same proven design of our Pneumatic Attachments with improved capabilities to get closer to shoulder or improved stock clearances without decreasing efficiency.



DETROIT: Engineered to the tightest of manufacturing tolerances, our Detroit line of attachments provide quality and reliability to customers who prefer a more traditional tangential rolling style.

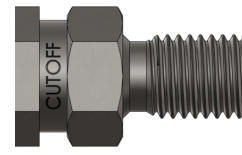
THREAD ROLLING SOLUTIONS FOR EVERY MACHINE

At **CJWinter**, we won't accept anything less than precise, consistent performance from our thread rolling attachments. Our world-renowned thread roll manufacturing and design techniques provide longer thread roll life, greater consistency and less runout. Standard and special size thread rolls are available for delivery as fast as 2-3 days.

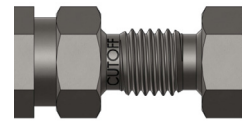
Other features available with our precision thread rolling attachments are high performance materials and coatings to increase product performance and tool life.

Application/design review is available at no charge when you provide a part print or specific roll geometry. Call today and [discover the difference in CJWinter quality and customer service!](#)

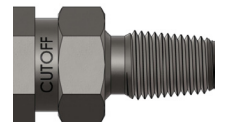
Profile Style KEY



1 C-1 Style



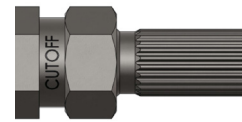
2 C-2 Style



3 Q-2 Style Taper



4 K-2 Style Taper



5 Straight Knurl/Spline



6 Diamond Knurl



7 Long End Rolling Style

1-800-288-ROLL
CJWinter.com

*Limited availability — not all attachments are available for all machines. ** The dimensions indicated for ER Series are Roll Work Faces; The thread length can range from 1 to 10x that amount. Please consult your distributor or CJWinter for application specific information.

Type	Attachment	Series	Profile Styles possible to be rolled with each Rolling Head Type	Range	Max Work Face	Machines
CNC		T1800 COMING SOON	1 2 3 4 6	#2 - 56 to 1 3/16 - 18 NPT 1/4 - 18 M2 x 0.4 to M30 x 2.0	0.847 in 21.5 mm	Most Lathes & Multi-Spindle Screw Machines
		189 ER Series	1 3 5 6 7	#6 - 40 to 1/4 - 28 M5 x 0.8 to M6 x 1.0	0.393 in** 9.988 mm	
		190 ER Series	1 3 5 6 7	1/4 - 20 to 7/16 - 20 M6 x 0.75 - M11 x 1.25	0.590 in** 14.986 mm	
		191 ER Series	1 3 5 6 7	5/16 - 28 to 5/8 - 18 M12 x 1.25 to M16 x 2.0	0.787 in** 19.994 mm	
		193 ES Series	1 3 5 6 7	1/2 - 28 to 1 3/16 - 20 M12 x 0.5 to M30 x 2.0	0.786 in** 19.966 mm	
		194 ER Series	1 3 5 6 7	7/16 - 14 to 7/8 - 14 M12 x .75 to M22 x 2.5	0.984 in** 24.993 mm	
		192 ES Series	5	Knurl/Spline 0.625 - 1.00" 15.9 - 25.4	2.000 in 50.8 mm	
		NC41	5 6	Knurl Only .190" - .815"	1.000 in 25.4 mm	
Radial Infeed* Pinch Type Attachments and Tangential* Type Attachments		125/126 Series	1 2 3 4 5 6	#0 - 80 to 1/2 - 32 1/16 - 27 NPT to 1/4-18 NPT M1.4 x 0.3 to M12 x 1.75	0.630 in 16.0 mm	Brown & Sharpe Cono-Matic Davenport Euroturn Gildermeister Greenlee Hardinge Index Mitsubishi Mori-Say National Acme New Britain Schutte Tornos Bechler Warner Swasey Wickman ZPS
		134 Series	1 2 3 4 5 6	#0 - 80 to 3/4 - 32 1/16 - 27 NPT to 3/8-18 NPT M1.4 x 0.3 to M18 x 2.5	0.750 in 19.0 mm	
		141/151 Series	1 2 3 4 5 6	#0 - 80 to 7/8 - 32 1/16 - 27 NPT to 1/2-14 NPT M1.4 x 0.3 to M22 x 2.0	1.000 in 25.4 mm	
		160 Series	1 2 3 4 5 6	#10 - 32 to 1 7/8 - 18 1/8 - 27 NPT to 1 1/2 - 11 1/2 NPT M6 x 1.0 to M45 x 3.0	1.656 in 42.1 mm	
		162/163 Series	1 2 3 4 5 6		1.395 in 35.4 mm	
		170 Series	1 2 3 4 5 6	5/16 - 18 to 2 1/4 - 20 1/2 - 14 NPT to 1 1/2 - 11 1/2 NPT M10 x 1.5 to M56 x 3.0	1.656 in 42.1 mm	
		172/173 Series	1 2 3 4 5 6		1.395 in 35.4 mm	
Outboard Radial Infeed* Pinch Type and Outboard Detroit Attachments		145 OB Series	1 3 5 6	#0 - 80 to 3/4 - 32 1/16 - 27 NPT to 3/4 - 14 NPT M1.4 x 0.3 to M33 x 1.5	0.625 in 15.9 mm	
		165 OB Series	1 3 5 6		0.750 in 19.0 mm	
		77300	1 3 5 6		0.875 in 22.2 mm	
Detroit Style* Attachments		76200 / 76300	1 2 3 4 5 6	#0 - 80 to 3/4 - 32 1/16 - 27 NPT to 3/8-18 NPT M1.4 x 0.3 to M18 x 2.5	0.937 in 23.8 mm	
		76400	1 2 3 4 5 6		1.188 in 30.2 mm	
Rotary Radial Attachment		234-SA	5 6	Knurl Only .190" - .750"	0.750 in 19.0 mm	Buffoli Gnutti Porta Hydromat Rotary Transfer
		193 ES Series	1 3 5 6 7	1/2 - 28 to 1 3/16 - 20 M12 x 0.5 to M30 x 2.0	0.786 in 19.966 mm	

Why cut threads when rolling delivers superior strength, finish, and consistency? When modern machining demands reliability and versatility, CJWinter delivers without compromise.

Choosing CJWinter is an investment in advanced, state-of-the-art threading technology designed for efficiency.

Faster adjustments, quick recalibration, reduced downtime, and less material waste deliver measurable cost savings. It's a smarter, more streamlined approach to production—backed by a partner committed to your performance and long-term success.



1-800-288-ROLL

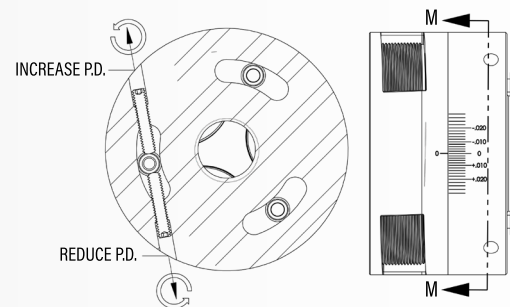
Features & Advantages of CJWinter End Rolling Attachments

Precision — CJWinter ER and ES Series of attachments feature a rigid one-piece front plate for superior reliability and accuracy. With sealed pitch adjustment, fine-adjust screws, ultra-hard low-friction coatings, and fewer wear parts, they outperform the competition.

One-Twist Adjustment — Adjust all three rolls with a single twist after loosening just three bolts. This keeps rolls evenly loaded and perfectly concentric for better results. CJWinter attachments ensure smoother operation, reduced wear, and consistent part quality.

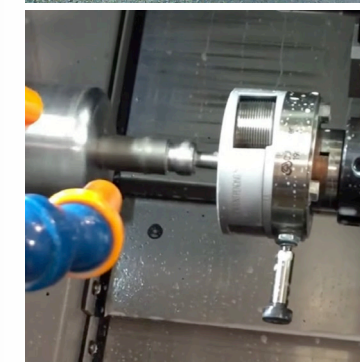
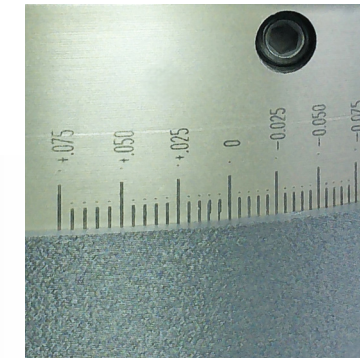
Graduated Scale — Adjustments to size are made while referencing a graduated scale on the side of the head. The scale is clearly labeled (+) and (-) enabling fine adjustments to be made with absolute confidence.

Fine Adjust Mechanism — Engineered for fast and precise setup, the Fine Adjust Mechanism uses two opposing set screws to deliver fast, accurate pitch diameter adjustments — ensuring optimal performance with every use.



Wide Range of Sizes — CJWinter End Rolling Attachments and their derivatives can accommodate a substantial range of sizes with optional variants and modifications the CJWinter catalog of end rolling heads is certain to meet your manufacturing needs.

193 ES — Special Heavy Duty Attachment excels with our robust **Roll-On Roll-Off technology**. With increased rigidity, both CAT40 / Ø1.50" shank options, and no reset failures, this attachment delivers high quality threads with minimal setup time and maximum reliability.



167 Ames Street, Rochester NY 14611 USA
Phone: 585-429-5000 | Toll Free: **800-288-7655 (ROLL)**
Email: info@CJWinter.com | Website: www.CJWinter.com

