

6

5

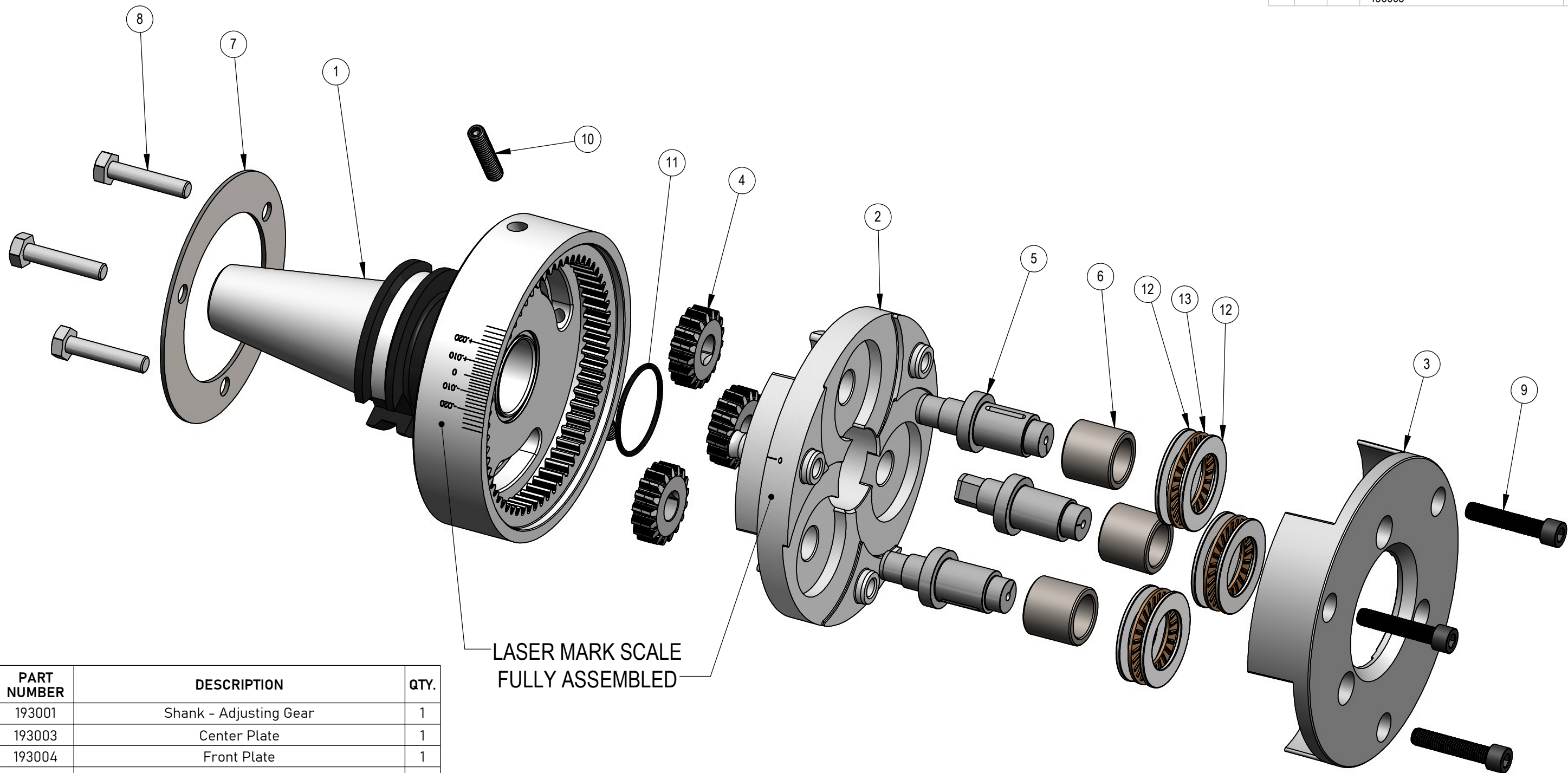
4

3

2

1

REV	ZONE	ECN	REVISION DESCRIPTION	DATE	ENG
A	....	....	Released	10/20	PA
B	....	5895	190052 OBSOLETE, REPLACED WITH 190003	08/25	JTF

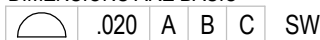


LASER MARK SCALE  
FULLY ASSEMBLED

ITEM NO.	PART NUMBER	DESCRIPTION	QTY.
1	193001	Shank - Adjusting Gear	1
2	193003	Center Plate	1
3	193004	Front Plate	1
4	193008	Eccentric Gear	3
5	193039	Eccentric Roll Pin (.015)	3
6	191013	Carbide Roll Bushing	3
7	193016	Washer (Ring Style)	1
8	193034	Bolt: Hex, 1/4-28 x 1.25 lg.	3
9	109029	Screw: SHCS; 1/4-28x1.25	3
10	193031	Screw: SSS, 1/4-20 x 1.25 lg. Oval Pt.	2
11	568-026	O-Ring: 1.38 OD x 1.239 ID x .070 W	1
12	192018	Thrust Washer	6
13	192017	Thrust Bearing	3

THIS DRAWING IS THE CONFIDENTIAL AND EXCLUSIVE PROPERTY OF C.J. WINTER MACHINE TECHNOLOGIES, INC. AND MAY NOT BE COPIED, REPRODUCED, OR DISCLOSED IN ANY WAY, WHATSOEVER, TO ANYONE WITHOUT THE EXPRESS WRITTEN PERMISSION OF C.J. WINTER MACHINE TECHNOLOGIES, INC. UNLAWFUL DISCLOSURE MAY RESULT IN PROSECUTION  
© 2004 C.J. WINTER MACHINE TECHNOLOGIES, INC.

UNLESS OTHERWISE SPECIFIED:  
DRAWING MUST COMPLY TO  
C. J. WINTER ENGINEERING  
STANDARD E1058 & ASME  
Y14.5M 1994. UNTOLERANCED  
DIMENSIONS ARE BASIC



DRAWN BY: P. Allart  
DWG DATE: 10/12/2020  
ENG. APPR: P. Allart  
APPR DATE: 10/12/2020  
MATERIAL: SEE BOM  
HEAT TRT: N/A



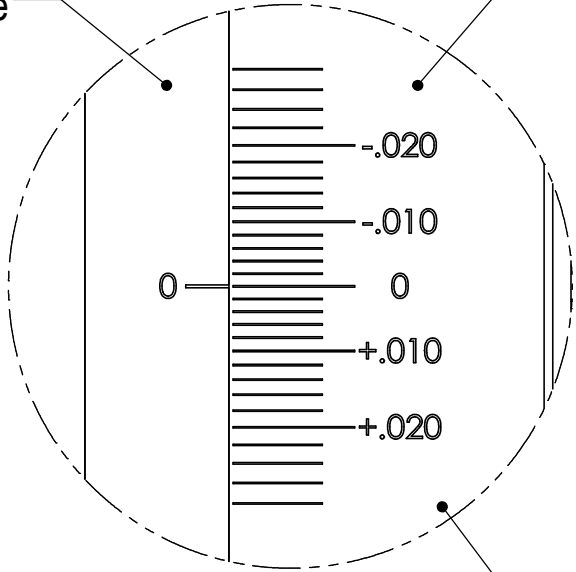
193 End Rolling Attachment  
CAT40 Shank -1.220 CB

DWG SIZE: SCALE: 1:1  
B  
SHEET 1 OF 2  
DRAWING NO.  
193 ES-03

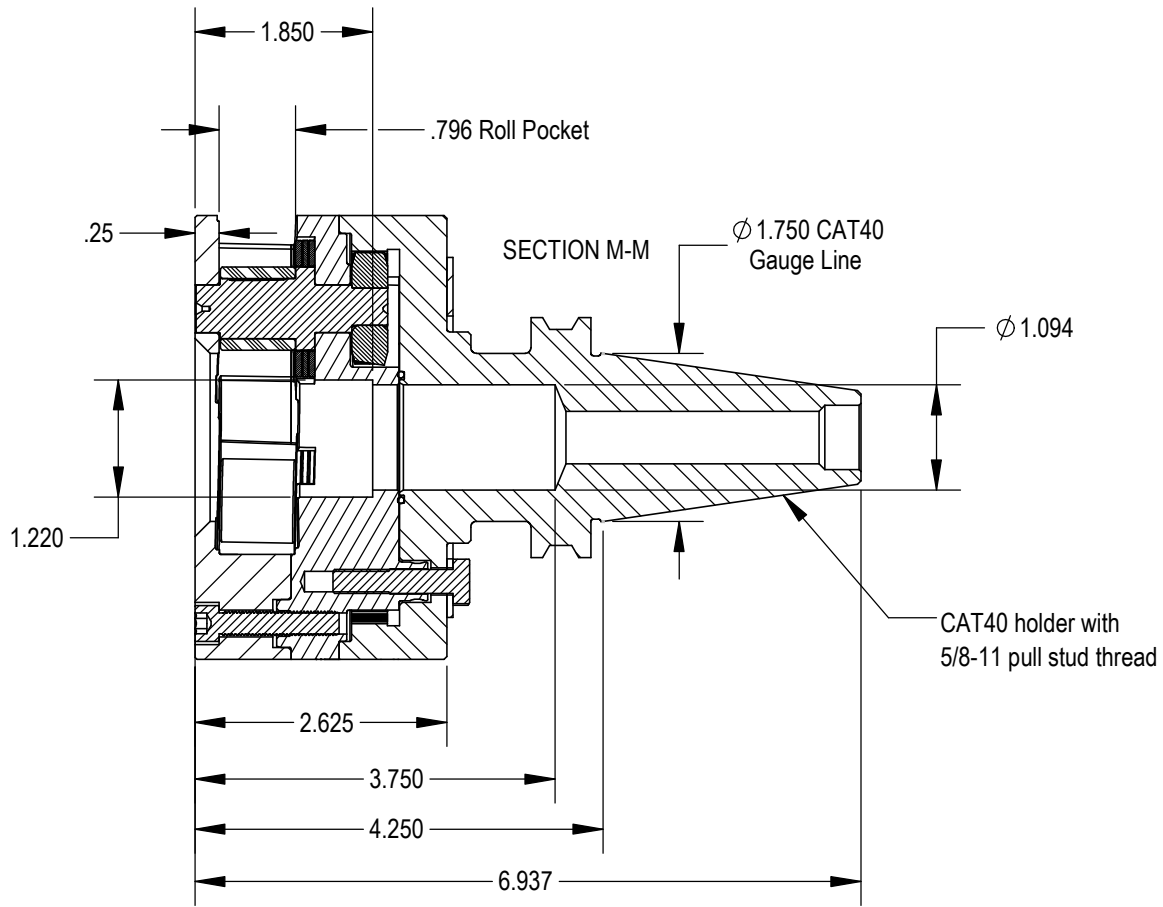
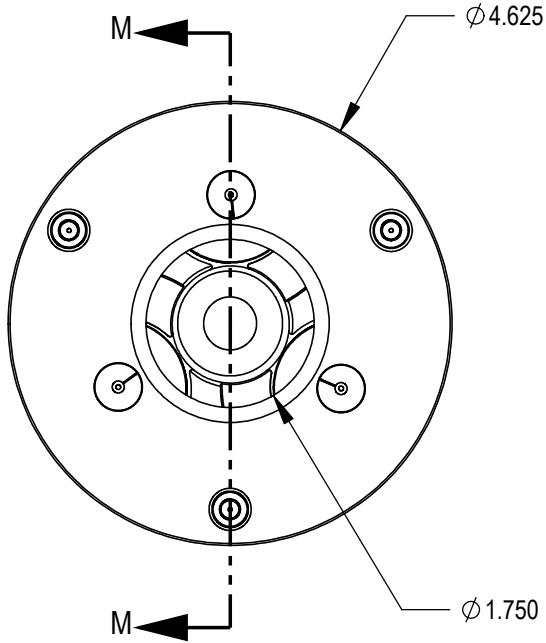
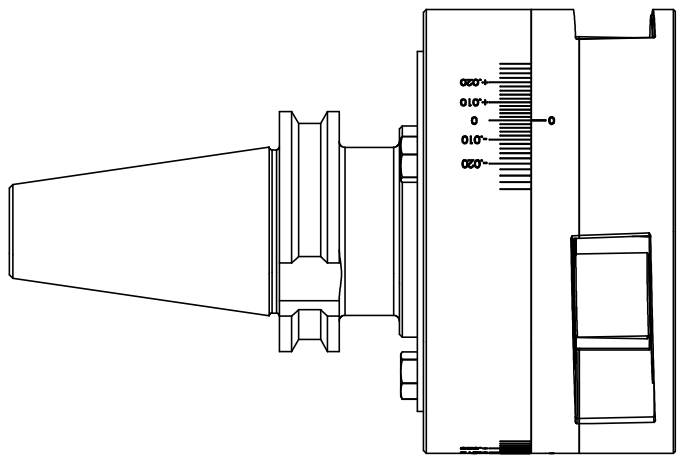
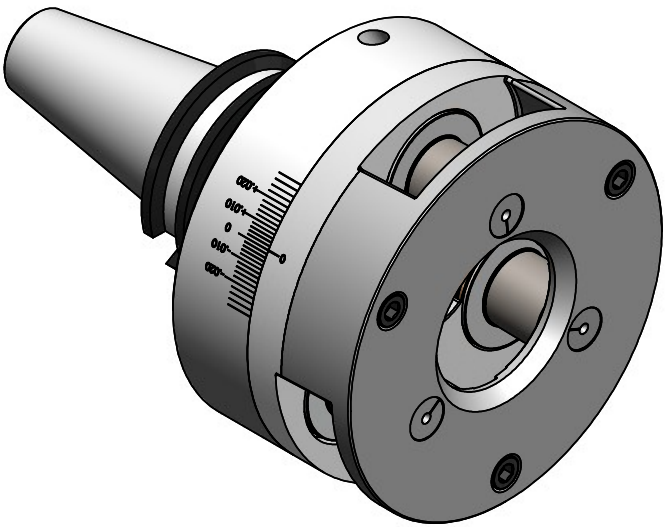
REV	ZONE	ECN	REVISION DESCRIPTION	DATE	ENG
A	....	....	Released	05/16	SGB
B	....	5895	190052 OBSOLETE, REPLACED WITH 190003	08/25	JTF

193003  
Center Plate

193001  
Shank



LASER MARK AFTER  
ATTACHMENT IS  
FULLY ASSEMBLED



THIS DRAWING IS THE CONFIDENTIAL AND EXCLUSIVE PROPERTY OF C.J. WINTER MACHINE TECHNOLOGIES, INC. AND MAY NOT BE COPIED, REPRODUCED, OR DISCLOSED IN ANY WAY, WHATSOEVER TO ANYONE WITHOUT THE EXPRESS WRITTEN PERMISSION OF C.J. WINTER MACHINE TECHNOLOGIES, INC. UNLAWFUL DISCLOSURE MAY RESULT IN PROSECUTION

UNLESS OTHERWISE SPECIFIED:  
DRAWING MUST COMPLY TO  
C. J. WINTER ENGINEERING  
STANDARD E1058 & ASME  
Y14.5M 1994. UNTOLERANCED  
DIMENSIONS ARE BASIC



DRAWN BY: P. Allart  
DWG DATE: 10/12/2020  
ENG. APPR: P. Allart  
APPR DATE: 10/12/2020  
MATERIAL: SEE BOM  
HEAT TRT: N/A



193 End Rolling Attachment  
CAT40 Shank -1.220 CB

DWG SIZE  
SCALE: 1:2  
B  
SHEET 2 OF 2  
DRAWING NO.  
193 ES-03