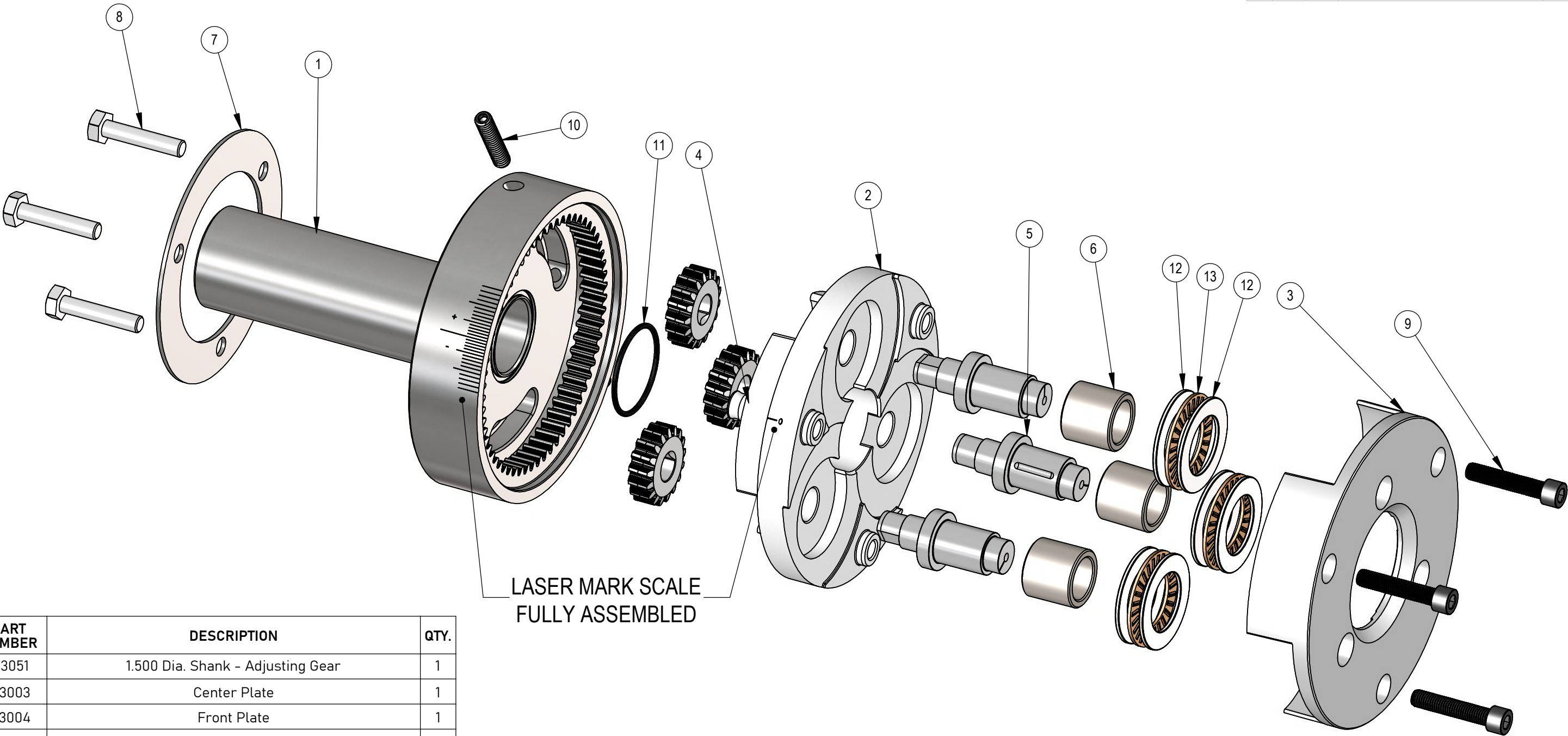


REV	ZONE	ECN	REVISION DESCRIPTION	DATE	ENG
A		Released	11/18	PRD
B	5895	193052 OBSOLETE, REPLACED WITH 190003	08/25	JTF



ITEM NO.	PART NUMBER	DESCRIPTION	QTY.
1	193051	1.500 Dia. Shank - Adjusting Gear	1
2	193003	Center Plate	1
3	193004	Front Plate	1
4	193008	Eccentric Gear	3
5	193039	Eccentric Roll Pin (.015)	3
6	191013	Carbide Roll Bushing	3
7	193016	Washer (Ring Style)	1
8	193034	Bolt: Hex, 1/4-28 x 1.25 lg.	3
9	109029	Screw: SHCS; 1/4-28x1.25	3
10	92765A314	Screw: SSS, 1/4-20 x 1.25 lg. Oval Pt.	2
11	568-026	O-Ring: 1.38 OD x 1.239 ID x .070 W	1
12	192018	Thrust Washer	6
13	192017	Thrust Bearing	3

THIS DRAWING IS THE CONFIDENTIAL AND EXCLUSIVE PROPERTY OF C.J. WINTER MACHINE TECHNOLOGIES, INC. AND MAY NOT BE COPIED, REPRODUCED, OR DISCLOSED IN ANY WAY, WHATSOEVER, TO ANYONE WITHOUT THE EXPRESS WRITTEN PERMISSION OF C.J. WINTER MACHINE TECHNOLOGIES, INC. UNLAWFUL DISCLOSURE MAY RESULT IN PROSECUTION
© 2004 C.J. WINTER MACHINE TECHNOLOGIES, INC.

UNLESS OTHERWISE SPECIFIED:
DRAWING MUST COMPLY TO
C. J. WINTER ENGINEERING
STANDARD E1058 & ASME
Y14.5M 1994. UNTOLERANCED
DIMENSIONS ARE BASIC



DRAWN BY: P. Diliberto
DWG DATE: 11/12/2018
ENG. APPR: P. Diliberto
APPR DATE: 11/12/2018
MATERIAL: SEE BOM
HEAT TRT: N/A



193 End Rolling Attachment

DWG SIZE
SCALE: 1:1
B
SHEET 1 OF 2

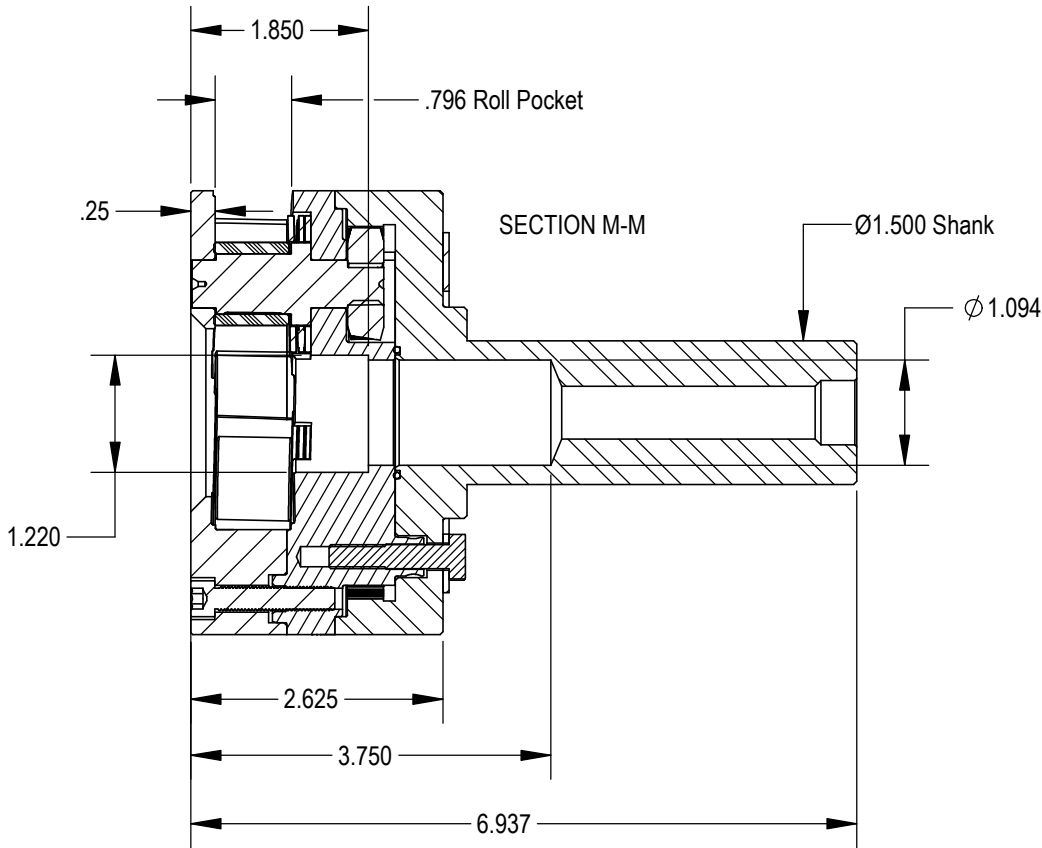
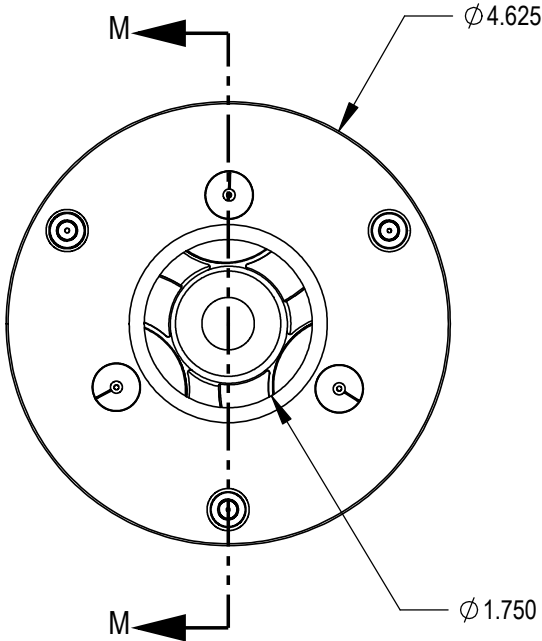
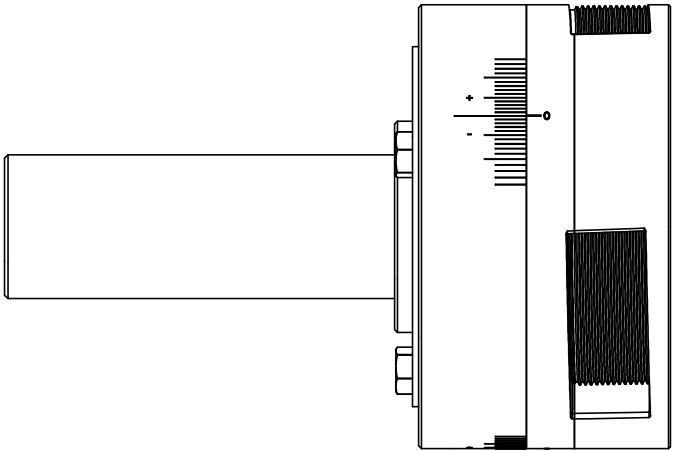
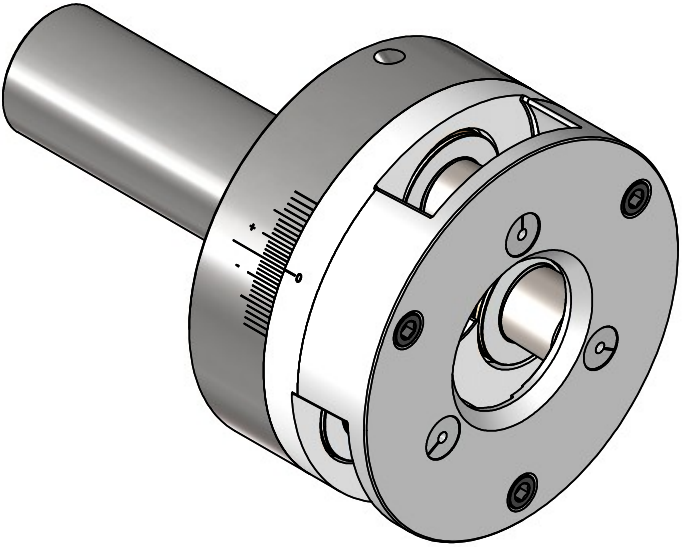
DRAWING NO.
193 ES-02

REV	ZONE	ECN	REVISION DESCRIPTION	DATE	ENG
A	Released	11/18	PRD
B	5895	193052 OBSOLETE, REPLACED WITH 190003	08/25	JTF

193003
Center Plate

LASER MARK AFTER
ATTACHMENT IS
FULLY ASSEMBLED

193051
Shank



THIS DRAWING IS THE CONFIDENTIAL AND EXCLUSIVE PROPERTY OF C.J. WINTER MACHINE TECHNOLOGIES, INC. AND MAY NOT BE COPIED, REPRODUCED, OR DISCLOSED IN ANY WAY, WHATSOEVER TO ANYONE WITHOUT THE EXPRESS WRITTEN PERMISSION OF C.J. WINTER MACHINE TECHNOLOGIES, INC. UNLAWFUL DISCLOSURE MAY RESULT IN PROSECUTION

UNLESS OTHERWISE SPECIFIED:
DRAWING MUST COMPLY TO
C. J. WINTER ENGINEERING
STANDARD E1058 & ASME
Y14.5M 1994. UNTOLERANCED
DIMENSIONS ARE BASIC



DRAWN BY: P. Diliberto
DWG DATE: 11/12/2018
ENG. APPR: P. Diliberto
APPR DATE: 11/12/2018
MATERIAL: SEE BOM
HEAT TRT: N/A



193 End Rolling Attachment

DWG SIZE
B
SCALE: 1:2
SHEET 2 OF 2
DRAWING NO.
193 ES-02