

6

5

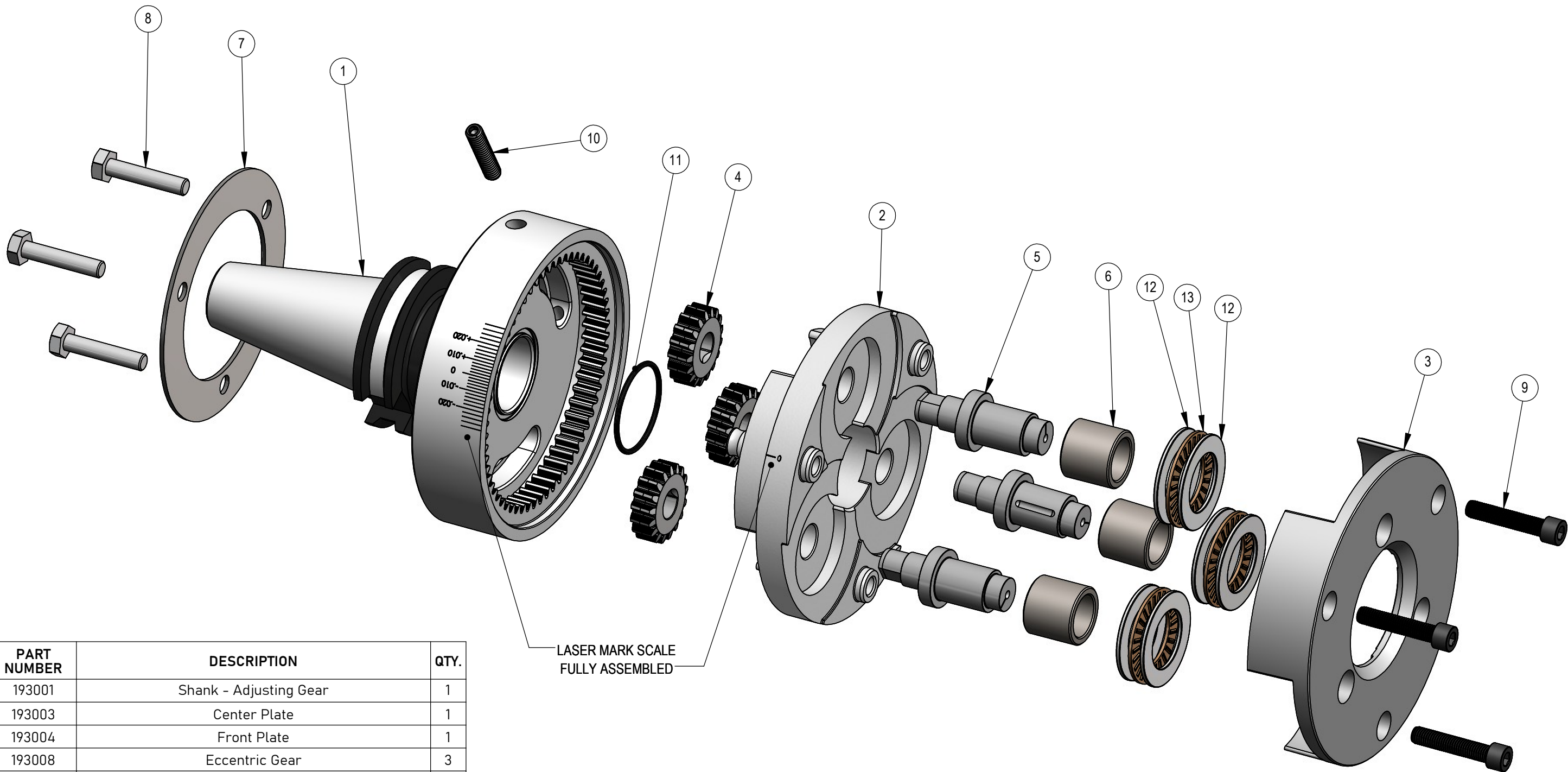
4

3

2

1

REV	ZONE	ECN	REVISION DESCRIPTION	DATE	ENG
A	Released	05/16	SGB
B			Added #12 & #13	06/16	SGB



LASER MARK SCALE
FULLY ASSEMBLED

ITEM NO.	PART NUMBER	DESCRIPTION	QTY.
1	193001	Shank - Adjusting Gear	1
2	193003	Center Plate	1
3	193004	Front Plate	1
4	193008	Eccentric Gear	3
5	193039	Eccentric Roll Pin (.015)	3
6	191013	Carbide Roll Bushing	3
7	193016	Washer (Ring Style)	1
8	193034	Bolt: Hex, 1/4-28 x 1.25 lg.	3
9	109029	Screw: SHCS; 1/4-28x1.25	3
10	193031	Screw: SSS, 1/4-20 x 1.25 lg. Oval Pt.	2
11	568-026	O-Ring: 1.38 OD x 1.239 ID x .070 W	1
12	192018	Thrust Washer	6
13	192017	Thrust Bearing	3

THIS DRAWING IS THE CONFIDENTIAL AND EXCLUSIVE PROPERTY OF C.J. WINTER MACHINE TECHNOLOGIES, INC. AND MAY NOT BE COPIED, REPRODUCED, OR DISCLOSED IN ANY WAY, WHATSOEVER, TO ANYONE WITHOUT THE EXPRESS WRITTEN PERMISSION OF C.J. WINTER MACHINE TECHNOLOGIES, INC. UNLAWFUL DISCLOSURE MAY RESULT IN PROSECUTION
© 2004 C.J. WINTER MACHINE TECHNOLOGIES, INC.

UNLESS OTHERWISE SPECIFIED:
DRAWING MUST COMPLY TO
C. J. WINTER ENGINEERING
STANDARD E1058 & ASME
Y14.5M 1994. UNTOLERANCED
DIMENSIONS ARE BASIC

 .020 A B C SW

DRAWN BY: S. Belpanno
DWG DATE: 05/04/2016
ENG. APPR: S. Belpanno
APPR DATE: 05/04/2016
MATERIAL: SEE BOM
HEAT TRT: N/A



193 End Rolling Attachment
CAT-40 Shank

DWG SIZE SCALE: 2:3
B SHEET 1 OF 2
DRAWING NO.
193 ES-01

6

5

4

3

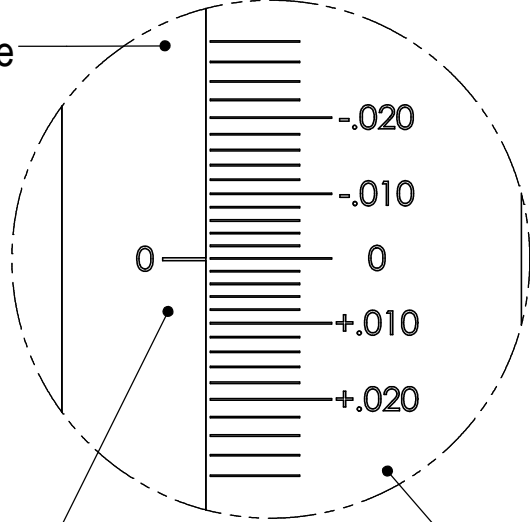
2

1

REV	ZONE	ECN	REVISION DESCRIPTION	DATE	ENG
A	Released	05/16	SGB
B	Added #12 & #13	06/16	SGB

193003

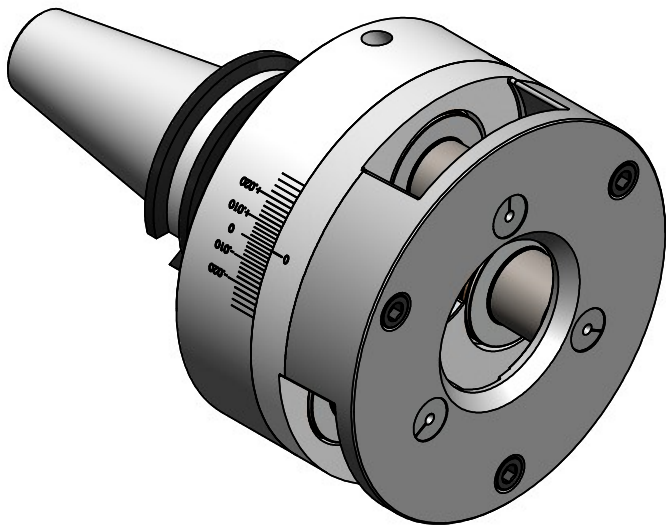
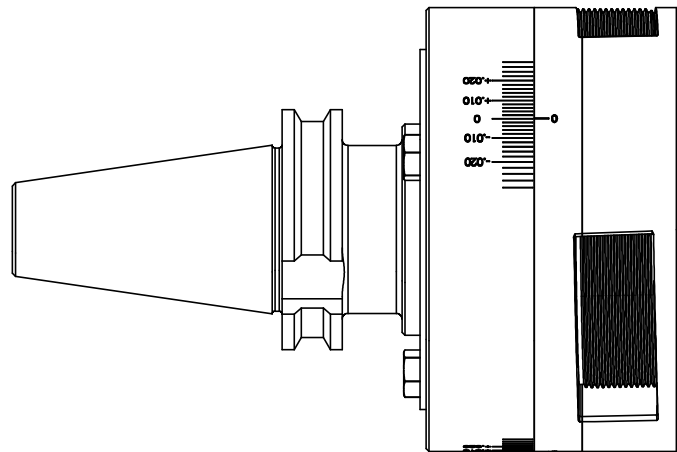
Center Plate



193001

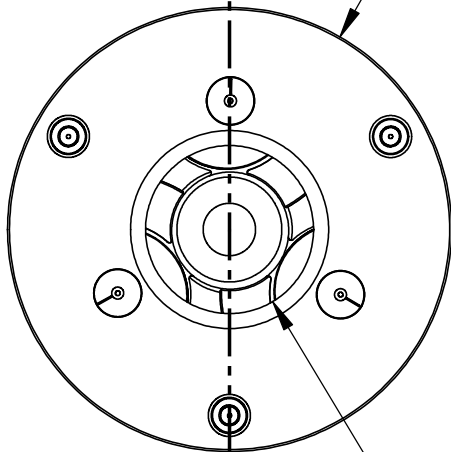
Shank

LASER MARK AFTER
ATTACHMENT IS
FULLY ASSEMBLED



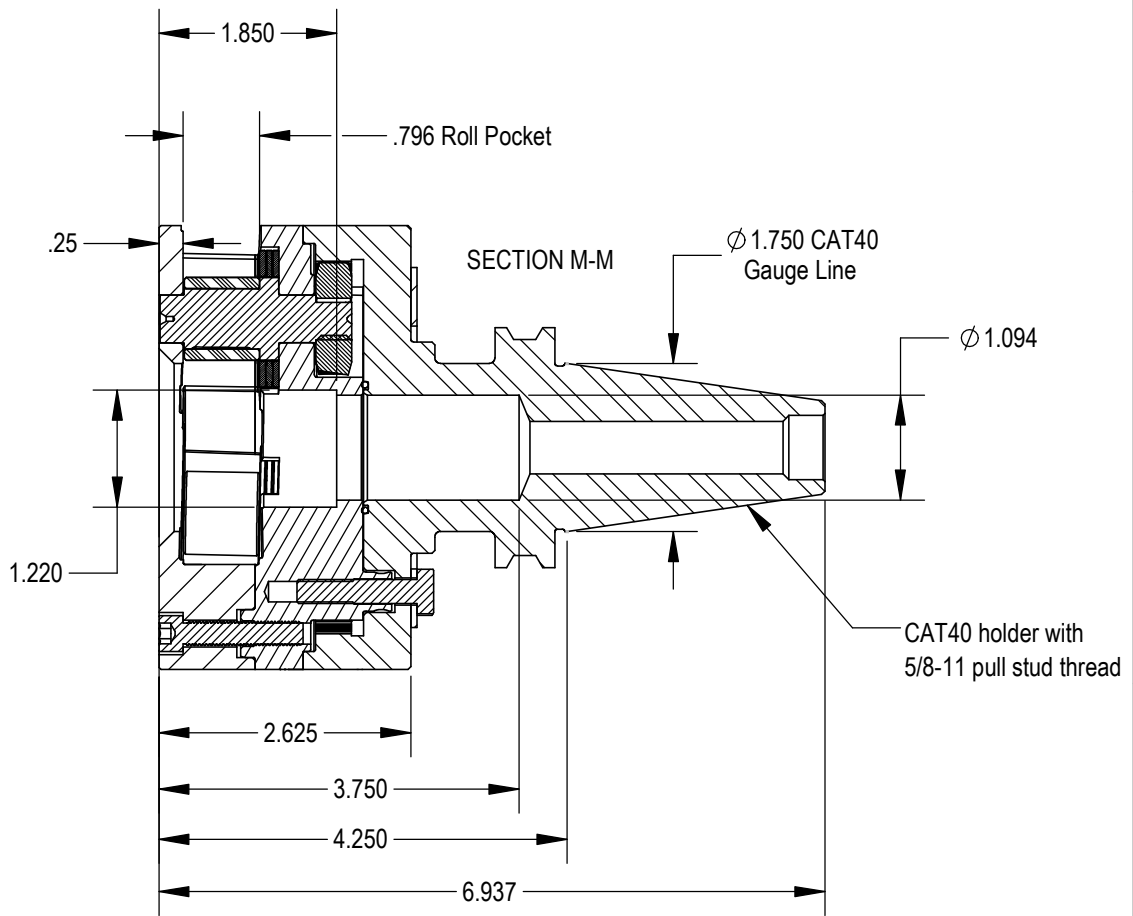
M

Ø 4.625



M

Ø 1.750



THIS DRAWING IS THE CONFIDENTIAL AND EXCLUSIVE PROPERTY OF C.J. WINTER MACHINE TECHNOLOGIES, INC. AND MAY NOT BE COPIED, REPRODUCED, OR DISCLOSED IN ANY WAY, WHATSOEVER TO ANYONE WITHOUT THE EXPRESS WRITTEN PERMISSION OF C.J. WINTER MACHINE TECHNOLOGIES, INC. UNLAWFUL DISCLOSURE MAY RESULT IN PROSECUTION

UNLESS OTHERWISE SPECIFIED:
DRAWING MUST COMPLY TO
C. J. WINTER ENGINEERING
STANDARD E1058 & ASME
Y14.5M 1994. UNTOLERANCED
DIMENSIONS ARE BASIC

Ø .020 A B C SW

DRAWN BY: S. Belpanno
DWG DATE: 05/04/2016
ENG. APPR: S. Belpanno
APPR DATE: 05/04/2016
MATERIAL: SEE BOM
HEAT TRT: N/A



193 End Rolling Attachment
CAT-40 Shank

DWG SIZE
SCALE: 1:2
B
SHEET 2 OF 2
DRAWING NO.
193 ES-01

6

5

4

3

2

1