

6

5

4

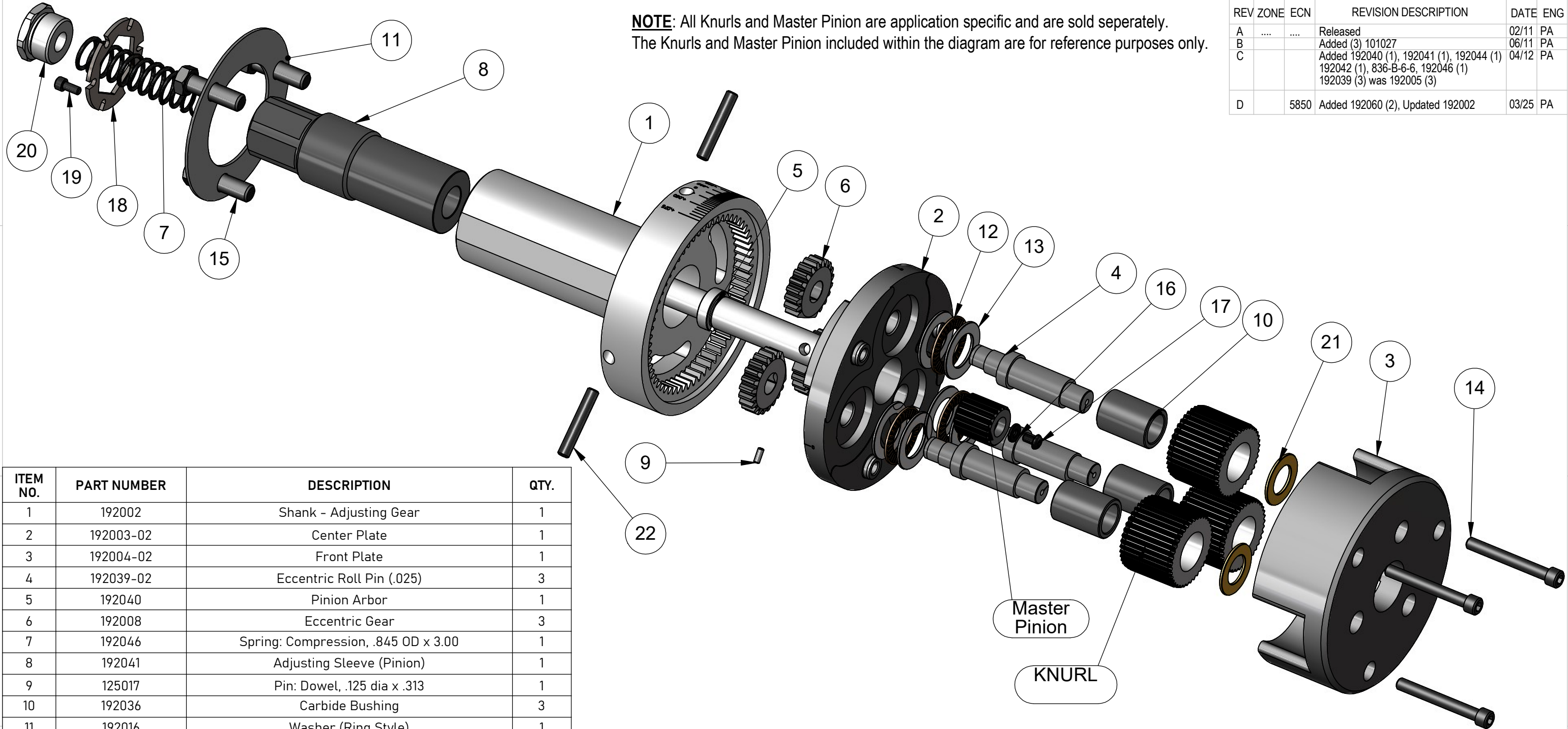
3

2

1

NOTE: All Knurls and Master Pinion are application specific and are sold seperately.
The Knurls and Master Pinion included within the diagram are for reference purposes only.

REV	ZONE	ECN	REVISION DESCRIPTION	DATE	ENG
A	Released	02/11	PA
B			Added (3) 101027	06/11	PA
C			Added 192040 (1), 192041 (1), 192044 (1) 192042 (1), 836-B-6-6, 192046 (1) 192039 (3) was 192005 (3)	04/12	PA
D		5850	Added 192060 (2), Updated 192002	03/25	PA



ITEM NO.	PART NUMBER	DESCRIPTION	QTY.
1	192002	Shank - Adjusting Gear	1
2	192003-02	Center Plate	1
3	192004-02	Front Plate	1
4	192039-02	Eccentric Roll Pin (.025)	3
5	192040	Pinion Arbor	1
6	192008	Eccentric Gear	3
7	192046	Spring: Compression, .845 OD x 3.00	1
8	192041	Adjusting Sleeve (Pinion)	1
9	125017	Pin: Dowel, .125 dia x .313	1
10	192036	Carbide Bushing	3
11	192016	Washer (Ring Style)	1
12	7682000	Thrust Bearing	3
13	7681800	Thrust Washer	6
14	834-A-11-32	SCREW: SHCS, #1/4-28 X 2.000"	3
15	134205-02	Bolt: Hex, 3/8-16 x 1.50, Grade 8	3
16	192044	Thrust Washer	1
17	836-B-6-6	Screw: BHCS, #8-32 x .375	1
18	192047	Spline Brake	1
19	125156	Screw: SHCS, #8-32 x .375	1
20	192042	Spring Retainer	1
21	192050-02	Thrust Washer	3
22	192060	Screw: SSS, 1/4-28 x 1.500 Cup Pt.	2

THIS DRAWING IS THE CONFIDENTIAL AND EXCLUSIVE PROPERTY OF C.J. WINTER MACHINE TECHNOLOGIES, INC. AND MAY NOT BE COPIED, REPRODUCED, OR DISCLOSED IN ANY WAY, WHATSOEVER, TO ANYONE WITHOUT THE EXPRESS WRITTEN PERMISSION OF C.J. WINTER MACHINE TECHNOLOGIES, INC. UNLAWFUL DISCLOSURE MAY RESULT IN PROSECUTION
© 2004 C.J. WINTER MACHINE TECHNOLOGIES, INC.

UNLESS OTHERWISE SPECIFIED:
DRAWING MUST COMPLY TO
C. J. WINTER ENGINEERING
STANDARD E1058 & ASME
Y14.5M 1994. UNTOLERANCED
DIMENSIONS ARE BASIC

 .020 A B C SW

DRAWN BY: P. Allart
DWG DATE: 02/22/2011
ENG. APPR: P. Allart
APPR DATE: 02/22/2011
MATERIAL: SEE BOM
HEAT TRT: N/A



CJWINTER
A Brinkman International Group, Inc. Company

Spline Attachment
(1.250 OAL x 1.0 Dia.)

DWG SIZE SCALE: 1:2
B SHEET 1 OF 3
DRAWING NO.
192 ES-02

6

5

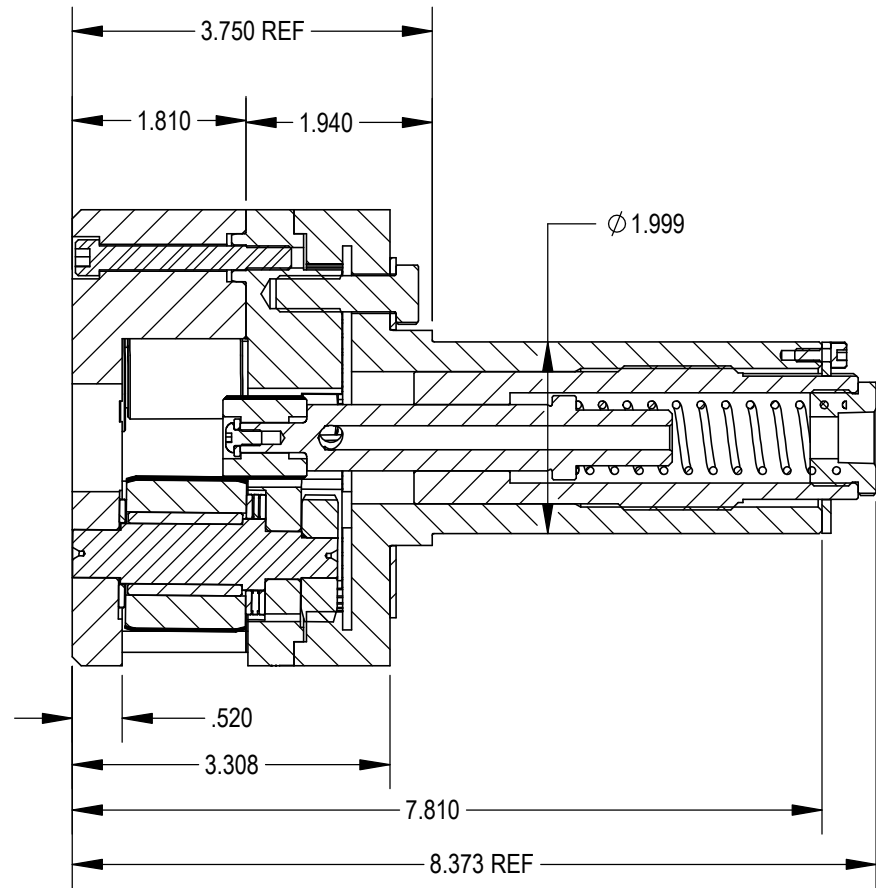
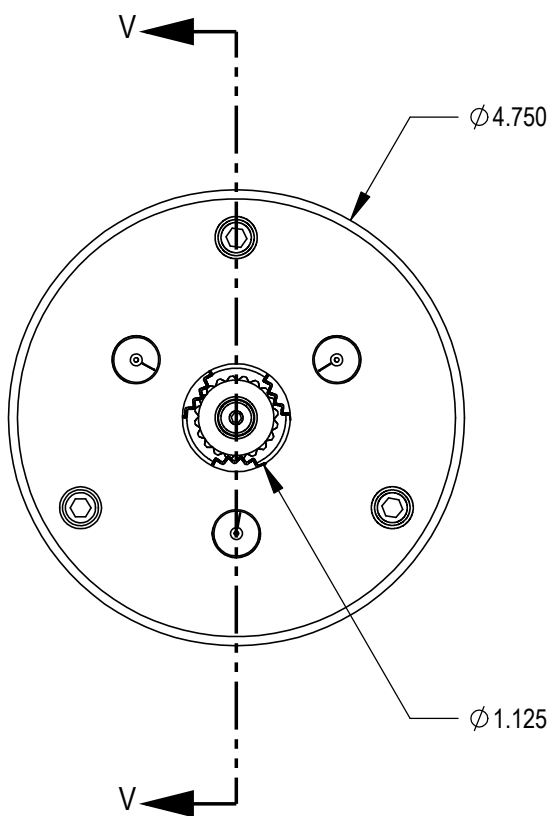
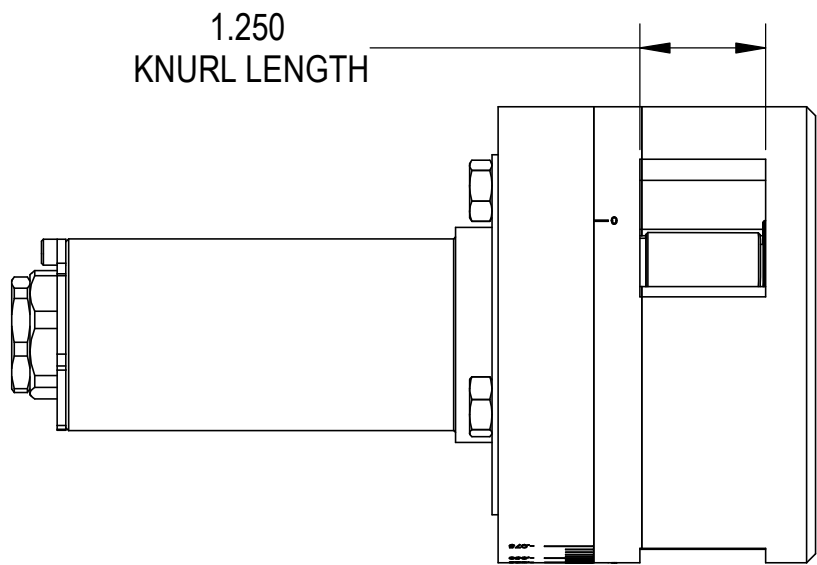
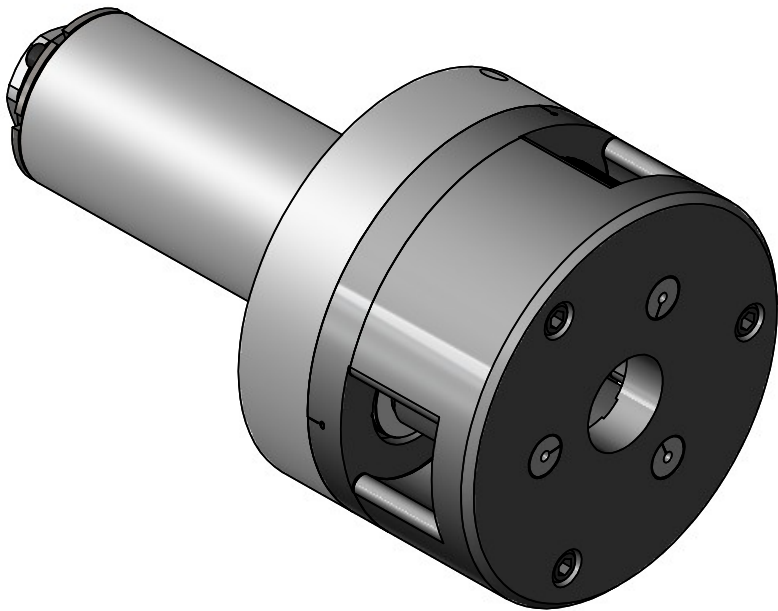
4

3

2

1

REV	ZONE	ECN	REVISION DESCRIPTION	DATE	ENG
A	Released	02/11	PA



SECTION V-V
SCALE 1 : 2

THIS DRAWING IS THE CONFIDENTIAL AND EXCLUSIVE PROPERTY OF C.J. WINTER MACHINE TECHNOLOGIES, INC. AND MAY NOT BE COPIED, REPRODUCED, OR DISCLOSED IN ANY WAY, WHATSOEVER TO ANYONE WITHOUT THE EXPRESS WRITTEN PERMISSION OF C.J. WINTER MACHINE TECHNOLOGIES, INC. UNLAWFUL DISCLOSURE MAY RESULT IN PROSECUTION

UNLESS OTHERWISE SPECIFIED:
DRAWING MUST COMPLY TO
C. J. WINTER ENGINEERING
STANDARD E1058 & ASME
Y14.5M 1994. UNTOLERANCED
DIMENSIONS ARE BASIC



DRAWN BY: P. Allart
DWG DATE: 02/23/2011
ENG. APPR: P. Allart
APPR DATE: 02/23/2011
MATERIAL: SEE BOM
HEAT TRT: N/A



Spline Attachment
(1.250 OAL x 1.0 Dia.)

DWG SIZE
B
SCALE: 1:2
SHEET 2 OF 3
DRAWING NO.
192 ES-02

6

5

4

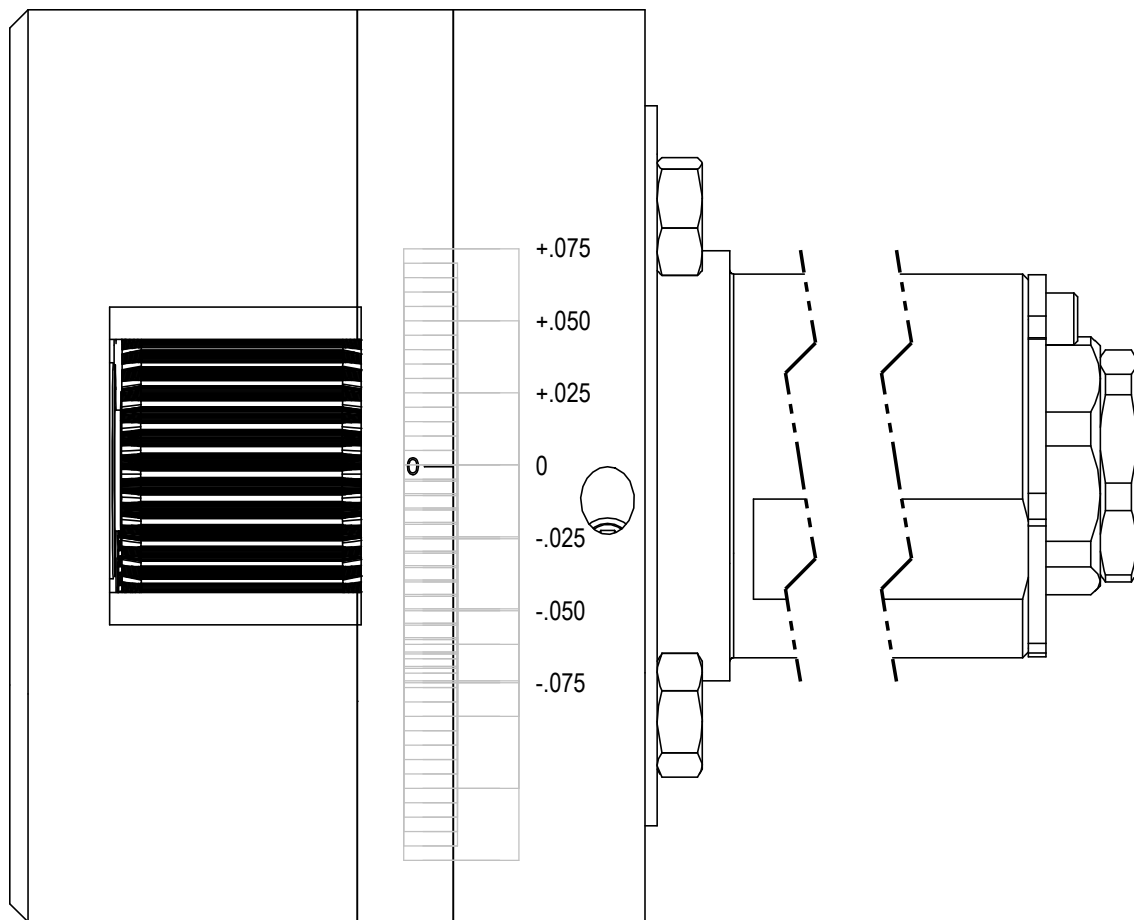
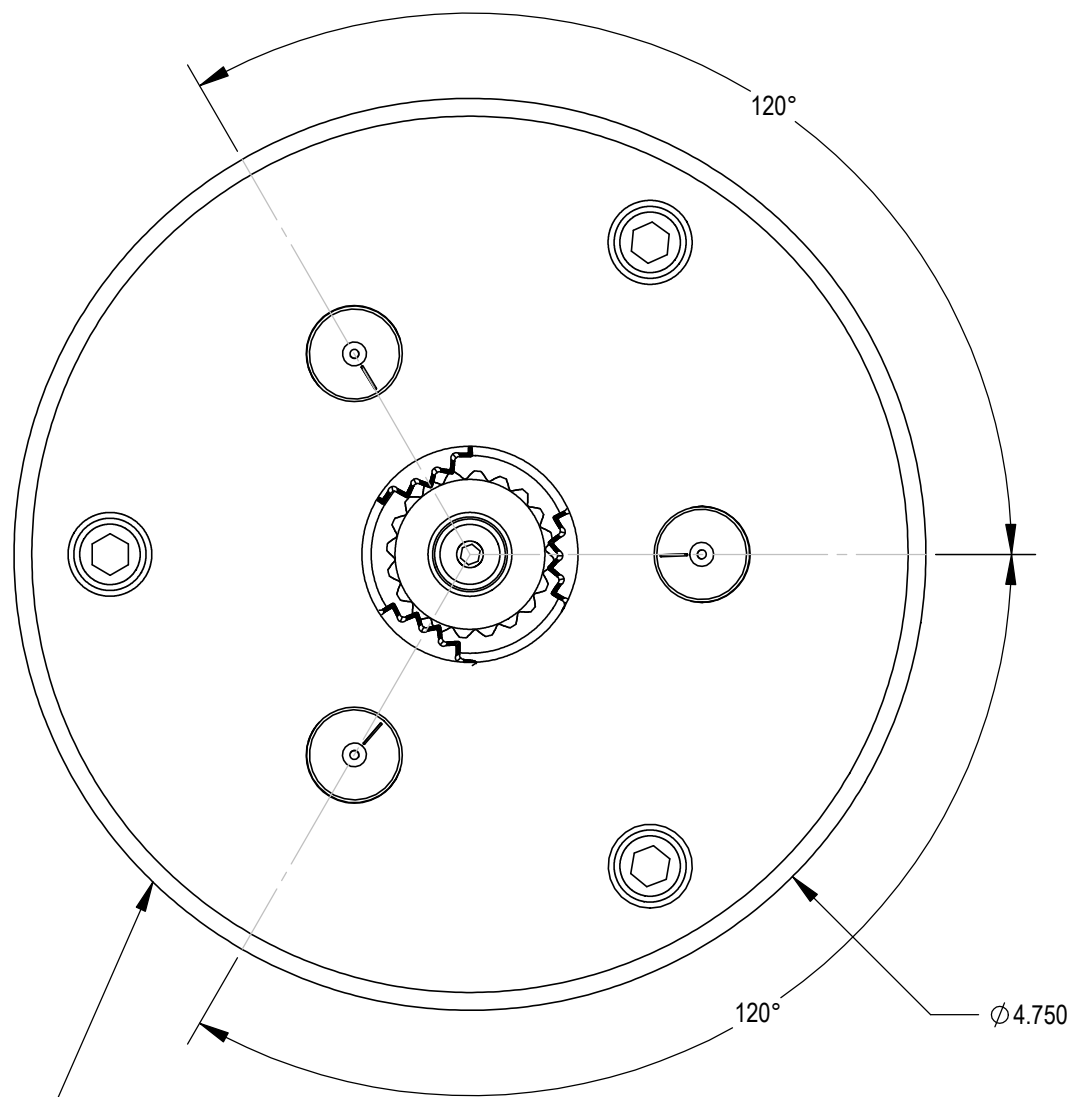
3

2

1

REV	ZONE	ECN	REVISION DESCRIPTION	DATE	ENG
A	Released	02/11	PA

LaserMarking Detail



Scale	Chordal position
0.075	1.035
0.070	0.941
0.065	0.850
0.060	0.764
0.055	0.682
0.050	0.604
0.045	0.529
0.040	0.458
0.035	0.390
0.030	0.325
0.025	0.264
0.020	0.205
0.015	0.149
0.010	0.097
0.005	0.047
0.000	0.000
-0.005	-0.047
-0.010	-0.097
-0.015	-0.149
-0.020	-0.205
-0.025	-0.264
-0.030	-0.325
-0.035	-0.390
-0.040	-0.458
-0.045	-0.529
-0.050	-0.604
-0.055	-0.682
-0.060	-0.764
-0.065	-0.850
-0.070	-0.941
-0.075	-1.035

Mark Scale in 3 Places, Every 120°
Visually Align -0- with roll pin within +/- 10°

PRIOR TO MARKING - SET HEAD TO CENTER OF ADJUSTMENT

- 1) Loosen 3 Hex Bolts Near Shank
- 2) Twist Head Until Fully Closed, Mark Across Both Parts w/ Sharpie
- 3) Twist Head Until Fully Open, Mark Across Both Parts w/ Sharpie
- 4) Adjust Until Mark on Head is Exactly 1/2 way Between Sharpie Marks
- 5) Tighten Hex Bolts

THIS DRAWING IS THE CONFIDENTIAL AND EXCLUSIVE PROPERTY OF C.J. WINTER MACHINE TECHNOLOGIES, INC. AND MAY NOT BE COPIED, REPRODUCED, OR DISCLOSED IN ANY WAY, WHATSOEVER TO ANYONE WITHOUT THE EXPRESS WRITTEN PERMISSION OF C.J. WINTER MACHINE TECHNOLOGIES, INC. UNLAWFUL DISCLOSURE MAY RESULT IN PROSECUTION

UNLESS OTHERWISE SPECIFIED:
DRAWING MUST COMPLY TO
C. J. WINTER ENGINEERING
STANDARD E1058 & ASME
Y14.5M 1994. UNTOLERANCED
DIMENSIONS ARE BASIC

 .020 A B C SW

DRAWN BY: P. Allart
DWG DATE: 02/23/2011
ENG. APPR: P. Allart
APPR DATE: 02/23/2011
MATERIAL: SEE BOM
HEAT TRT: N/A



Spline Attachment
(1.250 OAL x 1.0 Dia.)

DWG SIZE
SCALE: 1:1
B
Sheet 3 of 3
DRAWING NO.
192 ES-02