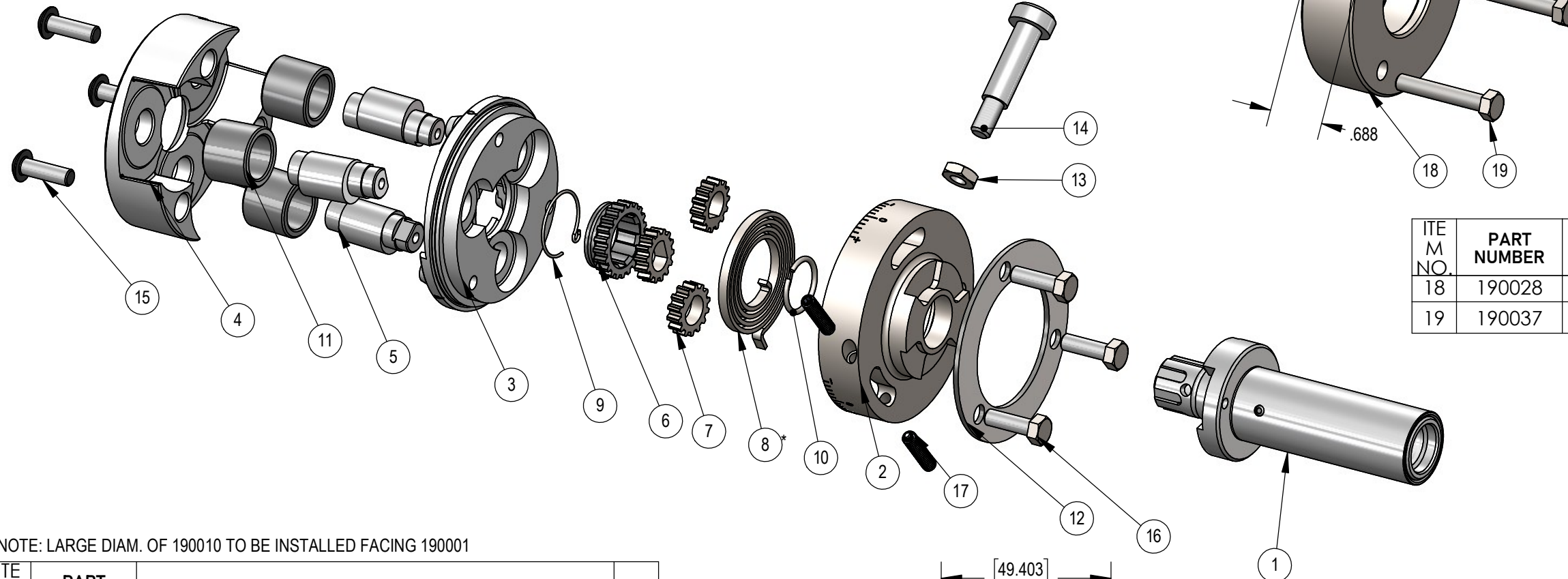


REV	ZONE	ECN	REVISION DESCRIPTION	DATE	ENG
A	Released	06/04	PA
B	Added Section View/Dimensions	04/18	PA/PD
C		5868	Added #8-32 x .750 SSS (2x)	05/25	NB

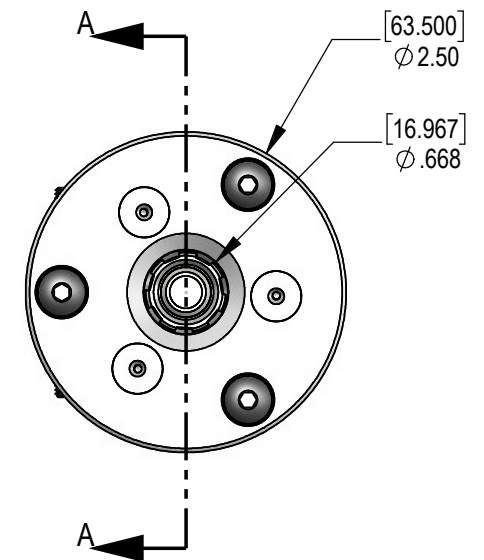
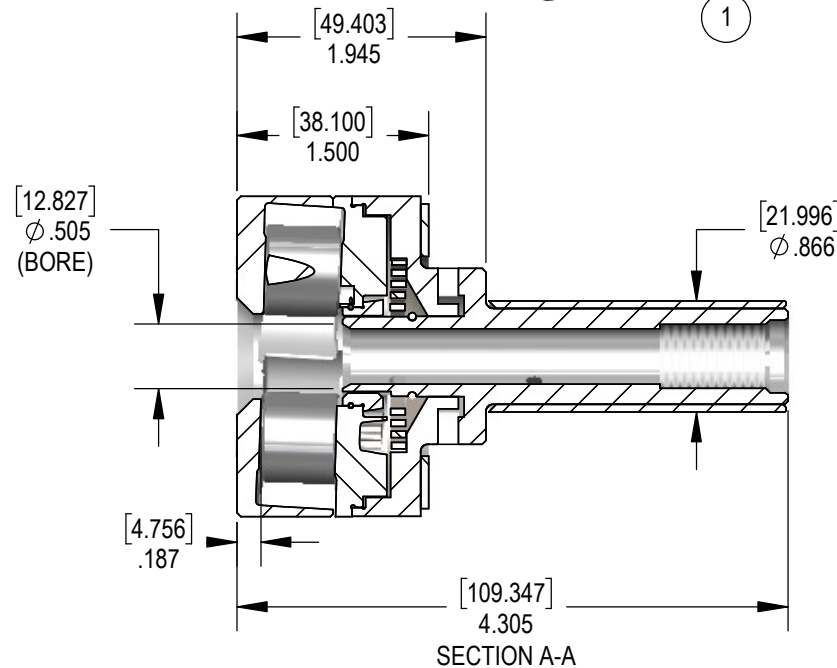


Optional Not Included (Sold Separately)

ITEM NO.	PART NUMBER	DESCRIPTION	QTY.
18	190028	Lock Up Plate	1
19	190037	BOLT: Hex, M5 x 0.8 x 35MM	3

*NOTE: LARGE DIAM. OF 190010 TO BE INSTALLED FACING 190001

ITEM NO.	PART NUMBER	DESCRIPTION	QTY.
1	190034	22MM (.866\") Dia. Shank	1
2	190002	Spring Housing	1
3	190003	Center Plate	1
4	190004	Front Plate	1
5	190005	Eccentric Roll Pin	3
6	190007	Center Gear	1
7	190008	Eccentric Gear	3
8	190010	SPRING: Tapered Coil, 1.80 OD x 1.250 OAL x 60°	1
9	190011	RING: Retaining, .768 ID x .032	1
10	190012	RING: Retaining, .625 OD x .060	1
11	190013	Carbide Roll Bushing	3
12	190016	Washer (Ring Style)	1
13	190017	NUT: Jam, M6 x 1.0	1
14	190032	Stud (Head Collar)	1
15	190006	SCREW: BHCS, M5 x 0.8 x 16MM	3
16	190015	BOLT: Hex, M5 x 0.8 x 16MM	3
17	190051	SCREW: SSS, #8-32 x .750	2



THIS DRAWING IS THE CONFIDENTIAL AND EXCLUSIVE PROPERTY OF C.J. WINTER MACHINE TECHNOLOGIES, INC. AND MAY NOT BE COPIED, REPRODUCED, OR DISCLOSED IN ANY WAY, WHATSOEVER TO ANYONE WITHOUT THE EXPRESS WRITTEN PERMISSION OF C.J. WINTER MACHINE TECHNOLOGIES, INC. UNLAWFUL DISCLOSURE MAY RESULT IN PROSECUTION

UNLESS OTHERWISE SPECIFIED:
DRAWING MUST COMPLY TO
C. J. WINTER ENGINEERING
STANDARD E1058 & ASME
Y14.5M 1994. UNTOLERANCED
DIMENSIONS ARE BASIC

⌒ .020 A B C SW

DRAWN BY: D. Cole
DWG DATE: 12/12/2003
ENG. APPR: P. Allart
APPR DATE: 12/12/2003
MATERIAL: SEE BOM
HEAT TRT: N/A



190 End Rolling Attachment
22MM (.866\") Dia. Shank

DWG SIZE SCALE: 2:3
B SHEET 1 OF 1
DRAWING NO.
190 ER-04