

6

5

4

3

2

1

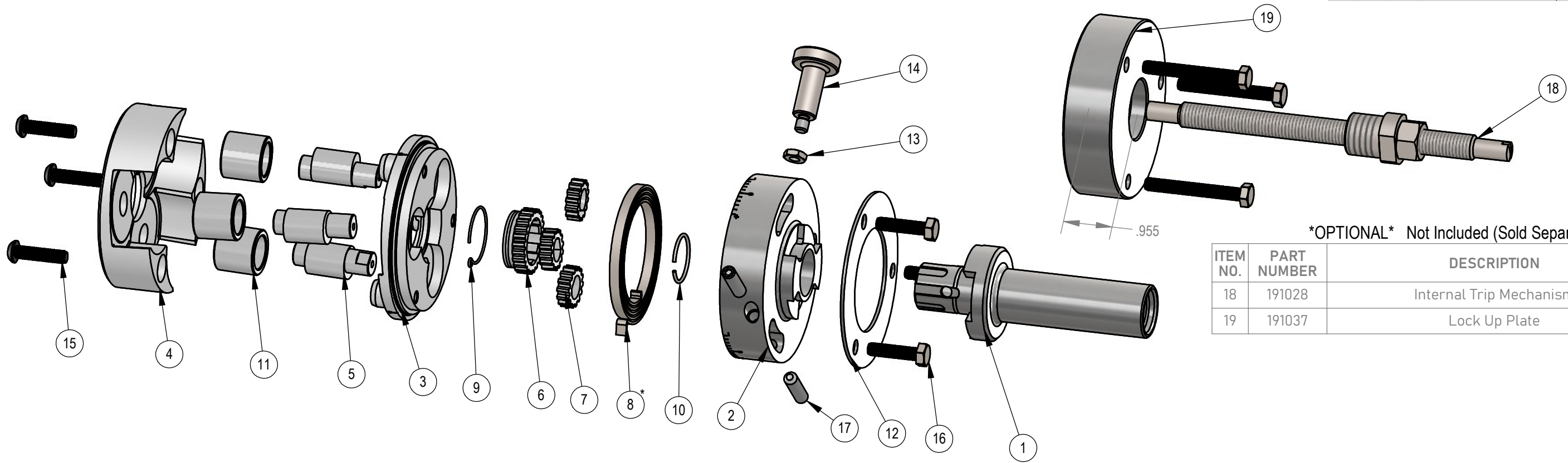
REV	ZONE	ECN	REVISION DESCRIPTION	DATE	ENG
A	Released	06/04	DC
B	4708	191033 was 191026, 191034 was 191027	05/06	DC
C	Added Section View/Dimensions	04/18	PA/PD
D		5868	Added 1/4-28 x 1.000 SSS (2x)	05/22	NB

D

D

C

C



OPTIONAL Not Included (Sold Separately)

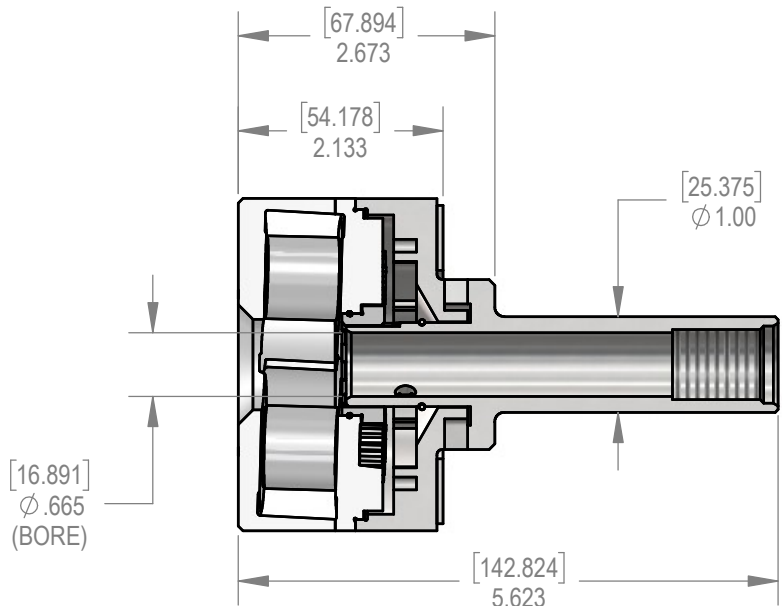
ITEM NO.	PART NUMBER	DESCRIPTION	QTY.
18	191028	Internal Trip Mechanism	1
19	191037	Lock Up Plate	1

*NOTE: LARGE DIAM. OF 191010 TO BE INSTALLED FACING 191001

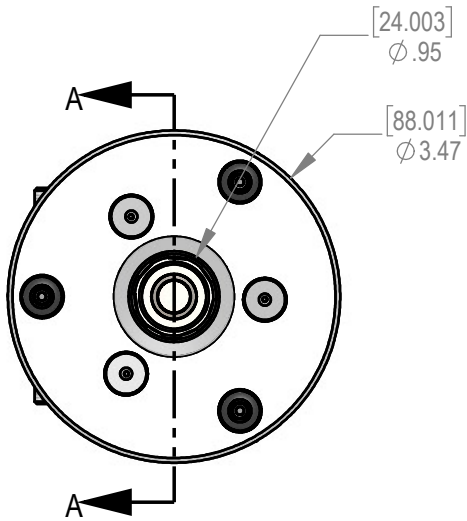
ITEM NO.	PART NUMBER	DESCRIPTION	QTY.
1	191001	Shaft	1
2	191002	Spring Housing	1
3	191003	Center Plate	1
4	191004	Front Plate	1
5	191005	Eccentric Roll Pin	3
6	191007	Center Gear	1
7	191008	Eccentric Gear	3
8	191010	SPRING: Tapered Coil, 2.625 OD x 2.431 OAL x 40°	1
9	191011	Ring: Retaining, 1.051 dia. x .039	1
10	191012	Ring: Retaining, .883 dia. x .058	1
11	191013	Carbide Roll Bushing	3
12	191016	Washer (Ring Style)	1
13	190017	NUT: Jam, M6 x 1.0	1
14	191015	Stud (Head Collar)	1
15	191033	SCREW: BHCS, M6 x 1.0 x 25MM	3
16	191034	BOLT: Hex, M6 x 1.0 x 25MM	3
17	191032	Screw: SSS, 1/4-28 x 1.000	2

A

A



SECTION A-A



B

THIS DRAWING IS THE CONFIDENTIAL AND EXCLUSIVE PROPERTY OF C.J. WINTER MACHINE TECHNOLOGIES, INC. AND MAY NOT BE COPIED, REPRODUCED, OR DISCLOSED IN ANY WAY, WHATSOEVER TO ANYONE WITHOUT THE EXPRESS WRITTEN PERMISSION OF C.J. WINTER MACHINE TECHNOLOGIES, INC UNLAWFUL DISCLOSURE MAY RESULT IN PROSECUTION

UNLESS OTHERWISE SPECIFIED:
DRAWING MUST COMPLY TO
C. J. WINTER ENGINEERING
STANDARD E1058 & ASME
Y14.5M 1994. UNTOLERANCED
DIMENSIONS ARE BASIC

 .020 A B C SW

DRAWN BY: M. Pernot
DWG DATE: 04/01/2004
ENG. APPR: D. Cole
APPR DATE: 04/14/2004
MATERIAL: SEE BOM
HEAT TRT: N/A



191 End Rolling Attachment
1.000" Dia. Shank

DWG SIZE SCALE: 1:2
B SHEET 1 OF 1
DRAWING NO.
191 ER-01

6

5

4

3

2

1