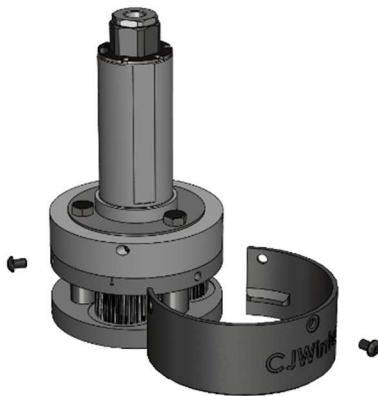
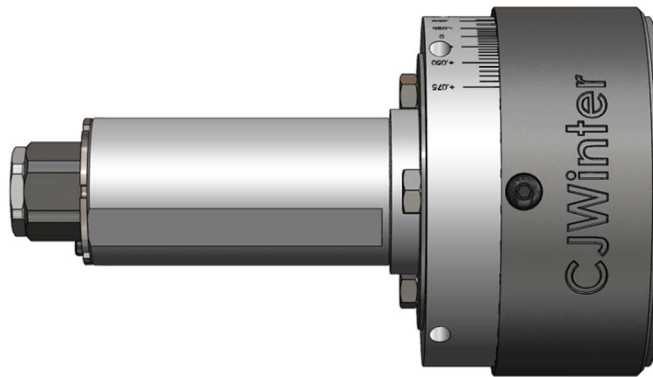




CJWINTER
A Brinkman International Group, Inc. Company

Product Bulletin

192 ES Chip Guard



Providing long lasting protection of vital attachment components, the new 192061 **Chip Guard** ships standard with **ALL** new 192 Series attachments - and is capable of being retrofitted on all existing 192 attachments.

Formed out of a durable, temperature resistant, carbon fiber polymer composite - the Wear Resistant Polymer Chip Guard is available for both standard length (1.000" OAL) and extended (2.000" OAL) 192 attachments.

Easily installed and removed with a set of button head screws, the guard provides a robust barrier to chips while maintaining easy access to the attachment's inner workings.



CJWinter OEM parts are constantly being redesigned to maximize the value to the Customer. Any parts supplier can sell you yet another replacement part for your problem. Let the team at CJWinter supply you with a cost-effective solution instead.



www.CJWinter.com | 1-800-288-7655 | sales@brinkmanproducts.com