

6

5

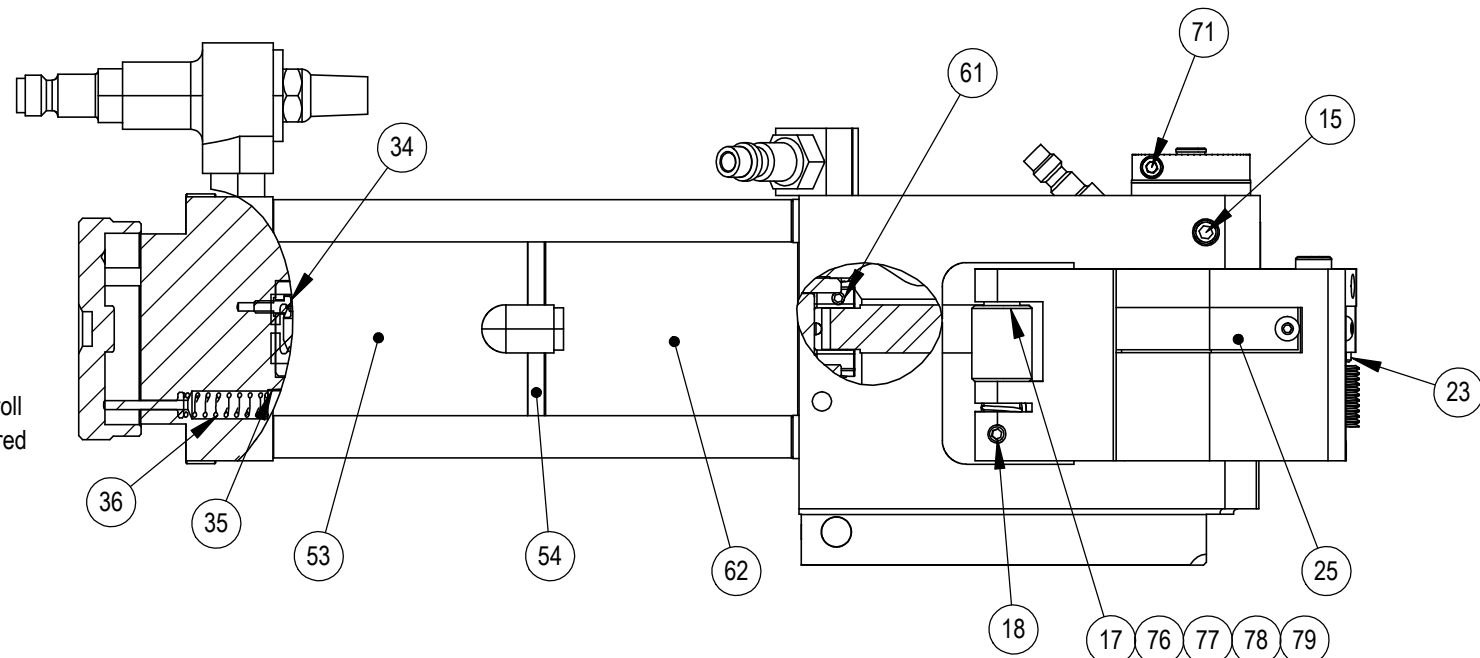
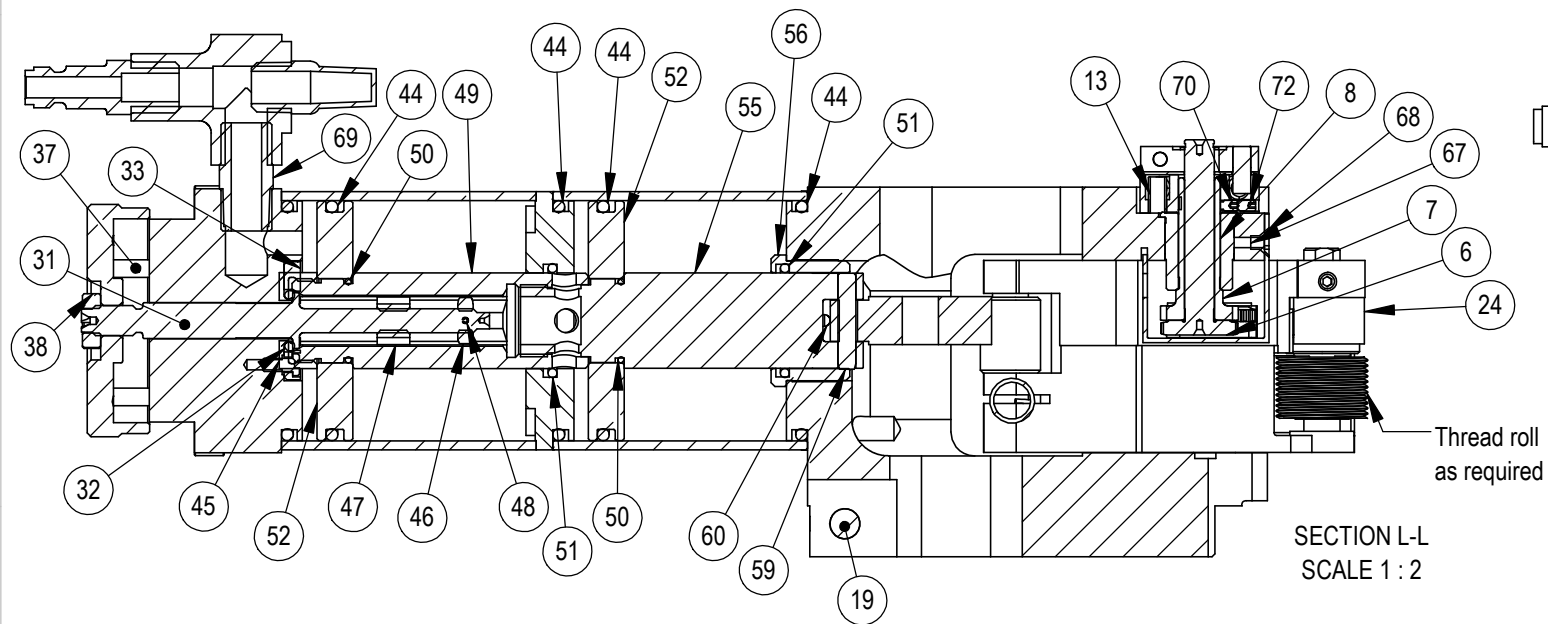
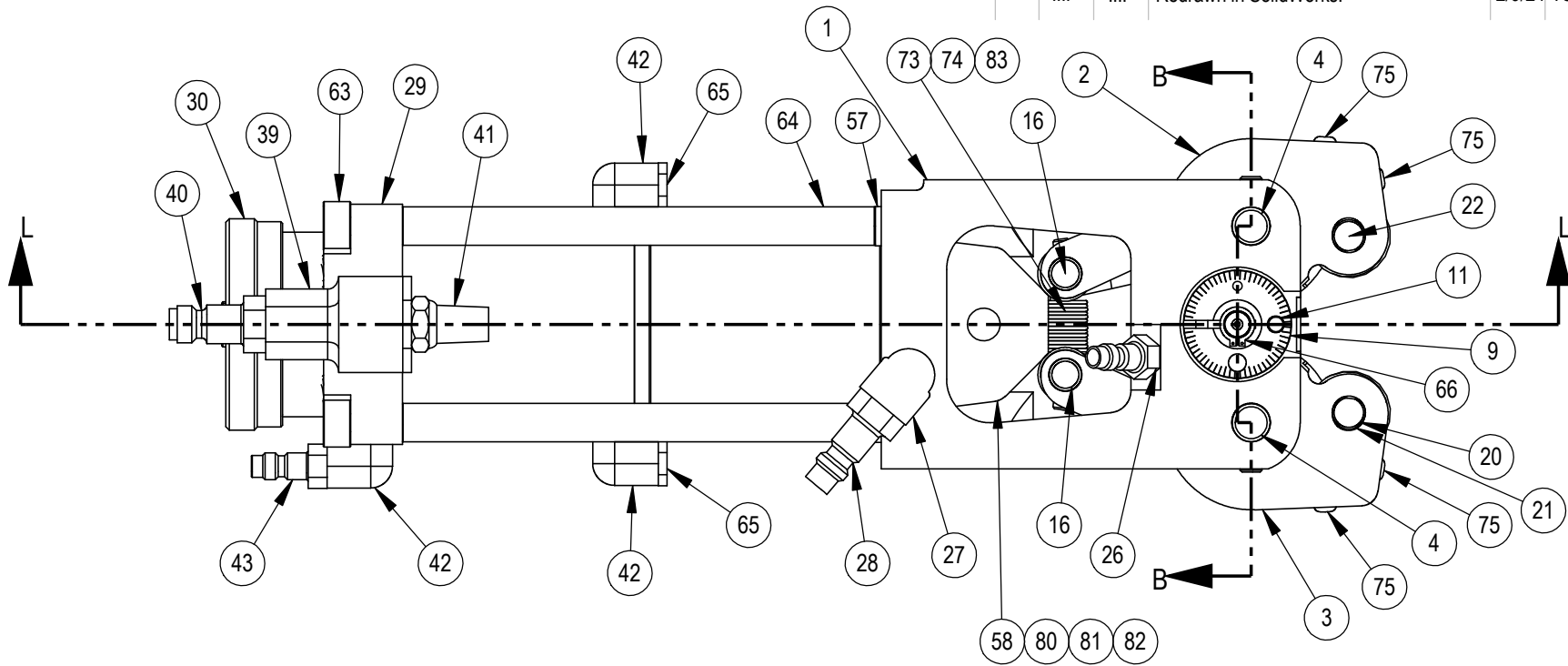
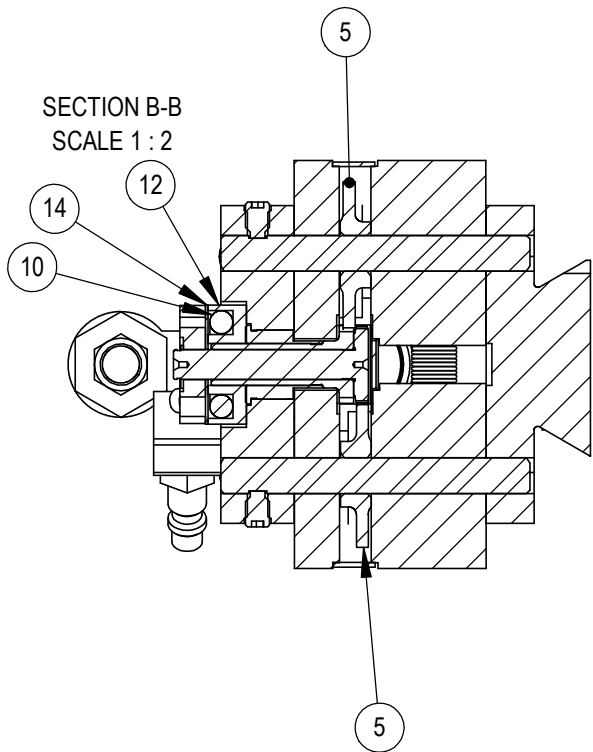
4

3

2

1

| REV | ZONE | ECN | REVISION DESCRIPTION   | DATE   | ENG |
|-----|------|-----|------------------------|--------|-----|
| E   | ...  | ... | Redrawn in SolidWorks. | 2/9/24 | TSS |



THIS DRAWING IS THE CONFIDENTIAL AND EXCLUSIVE PROPERTY OF C.J. WINTER MACHINE TECHNOLOGIES, INC. AND MAY NOT BE COPIED, REPRODUCED, OR DISCLOSED IN ANY WAY, WHATSOEVER TO ANYONE WITHOUT THE EXPRESS WRITTEN PERMISSION OF C.J. WINTER MACHINE TECHNOLOGIES, INC. UNLAWFUL DISCLOSURE MAY RESULT IN PROSECUTION © 2004 C.J. WINTER MACHINE TECHNOLOGIES, INC.

UNLESS OTHERWISE SPECIFIED: DRAWING MUST COMPLY TO C. J. WINTER ENGINEERING STANDARD E1058 & ASME Y14.5M 1994. UNTOLERANCED DIMENSIONS ARE BASIC  
 .020 A B C SW

DRAWN BY: T. Shurtliff  
 DWG DATE: 2/9/2024  
 ENG. APPR:  
 APPR DATE:  
 MATERIAL:  
 HEAT TRT:



DWG SIZE SCALE: 1:4  
**B** SHEET 1 OF 1

134925: Attachment Assembly

DRAWING NO.  
**A34DAV3RD**

6

5

4

3

2

1

| 6        |             |  |      | 5        |             |                                     |      | 4        |             |                                  |      | 3        |             |  |      | 2   |      |      |                        | 1      |     |  |  |
|----------|-------------|--|------|----------|-------------|-------------------------------------|------|----------|-------------|----------------------------------|------|----------|-------------|--|------|-----|------|------|------------------------|--------|-----|--|--|
| ITEM NO. | PART NUMBER | DESCRIPTION                            | QTY. | ITEM NO. | PART NUMBER | DESCRIPTION                         | QTY. | ITEM NO. | PART NUMBER | DESCRIPTION                      | QTY. | ITEM NO. | PART NUMBER | DESCRIPTION                              | QTY. | REV | ZONE | ECN  | REVISION DESCRIPTION   | DATE   | ENG |  |  |
| 1        | 134001      | Roll Arm Bracket                       | 1    | 31       | 134103      | Adjusting Screw (Poppet)            | 1    |          |             |                                  |      |          |             |  |      | E   | .... | .... | Redrawn in SolidWorks. | 2/9/24 | TSS |  |  |
| 2        | 134003      | L.H. Roll Arm                          | 1    | 32       | 134107      | O-Ring: .630 OD x .424 ID x .103 W  | 1    | 61       | 125043      | Screw: SSS, #8-32 x .188 Cup Pt. | 1    | 62       | 125058      | Cylinder                                 | 1    |     |      |      |                        |        |     |  |  |
| 3        | 134005      | R.H. Roll Arm                          | 1    | 33       | 134104      | O-Ring Retainer                     | 1    | 63       | 126007      | Cylinder Screw                   | 4    | 64       | 126006      | Cover Tube                               | 4    |     |      |      |                        |        |     |  |  |
| 4        | 134006      | Fulcrum Pin                            | 2    | 34       | 134106      | Screw: LHCS, #6-32 x .313           | 3    | 65       | 125411      | Muffler                          | 2    | 66       | 141380      | Compensator Retaining Ring 5/16 Dia.     | 1    |     |      |      |                        |        |     |  |  |
| 5        | 140234      | Idler Gear                             | 2    | 35       | 140305      | Screw: SPP, 1/8-27 PTF x .250       | 3    | 67       | 160086      | Screw: FHSS, #6-32 x .188        | 1    | 68       | 134013      | Center Gear Guard                        | 1    |     |      |      |                        |        |     |  |  |
| 6        | 141382      | Internal Gear                          | 1    | 36       | 134065      | Spring: Compression, .300 OD x .875 | 3    | 69       | 141705      | Close Nipple                     | 1    | 70       | 125018      | Screw: SSS, #4-40 x 0.175 HLF Dog Backer | 1    |     |      |      |                        |        |     |  |  |
| 7        | 141389      | External Gear                          | 1    | 37       | 141363      | Plunger- Adj. Knob                  | 3    | 71       | 141379      | Screw: SHCS, #6-32 x .500        | 1    | 72       | 125169      | Screw: SSS, #4-40 x 0.125 Flat Pt.       | 1    |     |      |      |                        |        |     |  |  |
| 8        | 141388      | Compensator Bushing                    | 1    | 38       | 140307      | Jam Nut, 5/16-18                    | 1    | 73       | 140222      | Roll Arm Spring - Long (Green)   | 1    | 74       | 141391      | Roll Arm Spring-Medium (Yellow)          | 1    |     |      |      |                        |        |     |  |  |
| 9        | 141383      | Adjusting Collar                       | 1    | 39       | 134069      | Valve: Quick Exhaust                | 1    | 75       | 134072      | Screw: BHCS, #6-32 x 0.250       | 4    | 76       | 140220      | Wedge Roller (.750 Dia)                  | 2    |     |      |      |                        |        |     |  |  |
| 10       | 140281      | Compensator Spring                     | 2    | 40       | 141369      | Quick Disconnect Plug               | 1    | 77       | 140221      | Wedge Roller (.875 Dia.)         | 2    | 78       | 140378      | Wedge Roller (.688 Dia)                  | 2    |     |      |      |                        |        |     |  |  |
| 11       | 140282      | Adjusting Collar Pin                   | 1    | 41       | 141704      | Muffler                             | 1    | 79       | 140379      | Wedge Roller (.813 Dia.)         | 2    | 80       | 134081      | Wedge                                    | 1    |     |      |      |                        |        |     |  |  |
| 12       | 140216      | Spring Retainer                        | 1    | 42       | 134059      | Adapter Elbow                       | 3    | 81       | 134082      | Wedge                            | 1    | 82       | 134083      | Wedge                                    | 1    |     |      |      |                        |        |     |  |  |
| 13       | 140285      | Pin Spring .188 Dia x .375             | 1    | 43       | 141370      | Quick Disconnect Plug               | 1    | 83       | 134012      | Roll Arm Spring-Short (Red)      | 1    |          |             |  |      |     |      |      |                        |        |     |  |  |
| 14       | 141378      | Cover Plate                            | 1    | 44       | 125060      | O-Ring: 2.50 OD x 2.25 ID x .125 W  | 5    |          |             |                                  |      |          |             |  |      |     |      |      |                        |        |     |  |  |
| 15       | 134038      | Screw: SSS, 1/4-28 x .250 Half Dog     | 2    | 45       | 126005      | Retainer Nut                        | 1    |          |             |                                  |      |          |             |  |      |     |      |      |                        |        |     |  |  |
| 16       | 140229      | Wedge Roller Pin                       | 2    | 46       | 125056      | Stop Nut                            | 1    |          |             |                                  |      |          |             |  |      |     |      |      |                        |        |     |  |  |
| 17       | 140219      | Wedge Roller (.625 Dia.)               | 2    | 47       | 126004      | Adjusting Nut                       | 1    |          |             |                                  |      |          |             |  |      |     |      |      |                        |        |     |  |  |
| 18       | 160054      | Screw: SSS, #10-32 x .250 Half Dog Pt. | 5    | 48       | 160140      | Pin: Spring, .063 dia x .438        | 1    |          |             |                                  |      |          |             |  |      |     |      |      |                        |        |     |  |  |
| 19       | 134023      | Eye Bolt Pin                           | 1    | 49       | 126002      | Cylinder Rear Shaft                 | 1    |          |             |                                  |      |          |             |  |      |     |      |      |                        |        |     |  |  |
| 20       | 134007      | Carbide Roll Pin                       | 2    | 50       | 125044      | O-Ring: 0.88 OD x .75 ID x .063 W   | 2    |          |             |                                  |      |          |             |  |      |     |      |      |                        |        |     |  |  |
| 21       | 134035      | Adjusting Screw                        | 2    | 51       | 125048      | O-Ring: 1.19 OD x 1.00 ID x 0.94 W  | 2    |          |             |                                  |      |          |             |  |      |     |      |      |                        |        |     |  |  |
| 22       | 134008      | Roll Gear                              | 2    | 52       | 125049      | Piston                              | 2    |          |             |                                  |      |          |             |  |      |     |      |      |                        |        |     |  |  |
| 23       | 134009      | Roll Gear Washer                       | 2    | 53       | 134056      | Cylinder                            | 1    |          |             |                                  |      |          |             |  |      |     |      |      |                        |        |     |  |  |
| 24       | 134010      | Roll Gear Guard                        | 2    | 54       | 134057      | Baffle Plate                        | 1    |          |             |                                  |      |          |             |  |      |     |      |      |                        |        |     |  |  |
| 25       | 134011      | Idler Gear Guard                       | 2    | 55       | 126001      | Cylinder Front Shaft                | 1    |          |             |                                  |      |          |             |  |      |     |      |      |                        |        |     |  |  |
| 26       | 125070      | Quick Disconnect Plug                  | 1    | 56       | 125047      | Cylinder Shaft Bushing              | 1    |          |             |                                  |      |          |             |  |      |     |      |      |                        |        |     |  |  |
| 27       | 134039      | 1/4 NPT Male 90 Deg. Elbow             | 1    | 57       | 141373      | Cover Tube Washer                   | 4    |          |             |                                  |      |          |             |  |      |     |      |      |                        |        |     |  |  |
| 28       | 141372      | Quick Disconnect Plug                  | 1    | 58       | 134080      | Wedge                               | 1    |          |             |                                  |      |          |             |  |      |     |      |      |                        |        |     |  |  |
| 29       | 125138      | Cylinder End Plate (Poppet)            | 1    | 59       | 125042      | Wedge Adapter Pin                   | 1    |          |             |                                  |      |          |             |  |      |     |      |      |                        |        |     |  |  |
| 30       | 125055      | Adjusting Knob                         | 1    | 60       | 141377      | Plunger Assembly                    | 2    |          |             |                                  |      |          |             |  |      |     |      |      |                        |        |     |  |  |

**Components**  
**134925: Attachment Assembly - Shown Here**  
**141600: Control Valve Assembly - Not Shown Here**  
**134975: Mounting Information - Not Shown Here**

**Serial No. Range**  
**134408 - Current**

|  |  |   |                                 |          |            |
|--|--|---|---------------------------------|----------|------------|
| THIS DRAWING IS THE CONFIDENTIAL AND EXCLUSIVE PROPERTY OF C.J. WINTER MACHINE TECHNOLOGIES, INC. AND MAY NOT BE COPIED, REPRODUCED, OR DISCLOSED IN ANY WAY, WHATSOEVER TO ANYONE WITHOUT THE EXPRESS WRITTEN PERMISSION OF C.J. WINTER MACHINE TECHNOLOGIES, INC UNLAWFUL DISCLOSURE MAY RESULT IN PROSECUTION | UNLESS OTHERWISE SPECIFIED: DRAWING MUST COMPLY TO C. J. WINTER ENGINEERING STANDARD E1058 & ASME Y14.5M 1994. UNTOLERANCED DIMENSIONS ARE BASIC<br> | DRAWN BY: T.Shurtliff<br>DWG DATE: 2/9/2024<br>ENG. APPR:<br>APPR DATE: |                                 | DWG SIZE | SCALE: 1:4 |
|  |  | MATERIAL:<br>HEAT TRT:  |                                 | <b>B</b> | Sheet1     |
| 134925: Attachment Assembly  |  |   | DRAWING NO.<br><b>A34DAV3RD</b> |          |            |

D

D

C

C

B

B

A

A

6

5

4

3

2

1