

REV	ZONE	ECN	REVISION DESCRIPTION	DATE	ENG
A	....	....	Released	02/11	PA
B			Added (3) 101027	06/11	PA
C			Added 192040 (1), 192041 (1), 192044 (1) 192042 (1), 836-B-6-6, 192046 (1) 192039 (3) was 192005 (3)	04/12	PA

ITEM NO.	PART NUMBER	DESCRIPTION	QTY.
1	192004	Front Plate	1
2	192038	Riser 1.00 (3/8-16)	3
3	192003	Center Plate	1
4	192008	Eccentric Gear	3
5	192036	Carbide Bushing	3
6	192002	Shank - Adjusting Gear	1
7	192016	Washer (Ring Style)	1
8	140366	Screw: LHCS, 3/8-16 x .750	3
9	134205	Bolt: Hex, 3/8-16 x 1.50, Grade 8	3
10	192017	Thrust Bearing	3
11	192018	Thrust Washer	6
12	101027	Screw: SSS, #1/4-28 x .250 Cup Pt.	3
13	192040	Pinion Arbor	1
14	192041	Adjusting Sleeve (Pinion)	1
15	192044	Thrust Washer	1
16	192042	Spring Retainer	1
17	836-B-6-6	Screw: BHCS, #8-32 x .375	1
18	192046	Spring: Compression, .845 OD x 3.00	1
19	192047	Spline Brake	1
20	192039	Eccentric Roll Pin (.015)	3
21	125156	Screw: SHCS, #8-32 x .375	1
22	192050	Thrust Washer	3

THIS DRAWING IS THE CONFIDENTIAL AND EXCLUSIVE PROPERTY OF C.J. WINTER MACHINE TECHNOLOGIES, INC. AND MAY NOT BE COPIED, REPRODUCED, OR DISCLOSED IN ANY WAY, WHATSOEVER TO ANYONE WITHOUT THE EXPRESS WRITTEN PERMISSION OF C.J. WINTER MACHINE TECHNOLOGIES, INC. UNLAWFUL DISCLOSURE MAY RESULT IN PROSECUTION  
© 2004 C.J. WINTER MACHINE TECHNOLOGIES, INC.

UNLESS OTHERWISE SPECIFIED:  
DRAWING MUST COMPLY TO  
C. J. WINTER ENGINEERING  
STANDARD E1058 & ASME  
Y14.5M 1994. UNTOLERANCED  
DIMENSIONS ARE BASIC

 .020 A B C SW

DRAWN BY: P. Allart  
DWG DATE: 02/22/11  
ENG. APPR:  
APPR DATE:  
MATERIAL:  
HEAT TRT:



**C. J. WINTER**  
MACHINE TECHNOLOGIES, INC.

Spline Attachment

DWG SIZE SCALE: 1:8  
B SHEET 1 OF 3  
DRAWING NO.  
192 ES-06

6

5

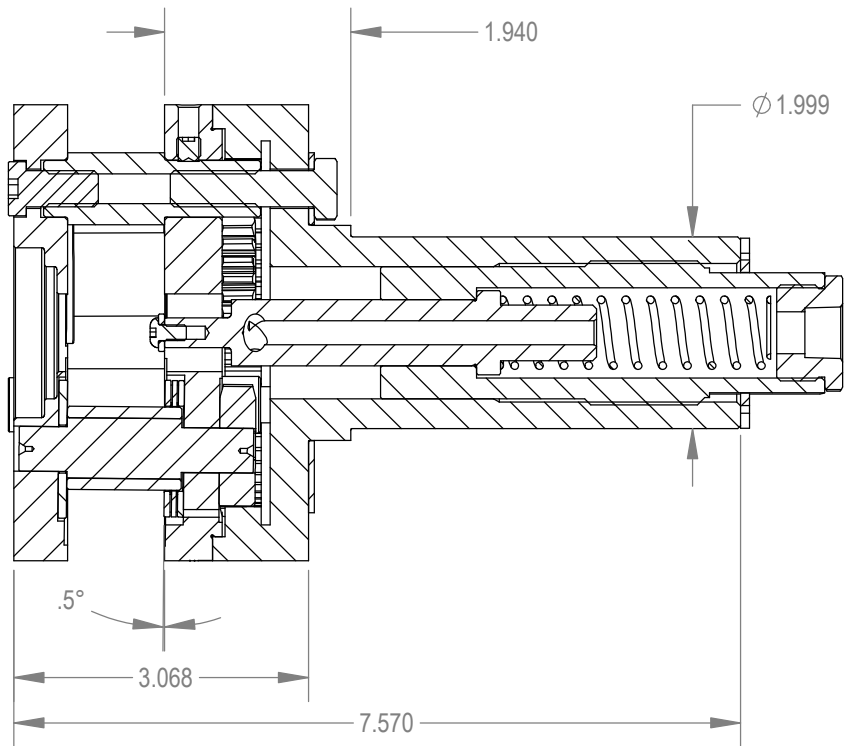
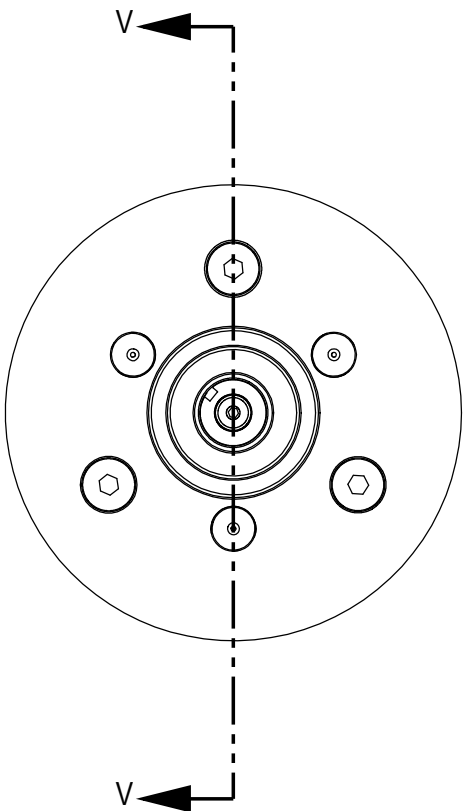
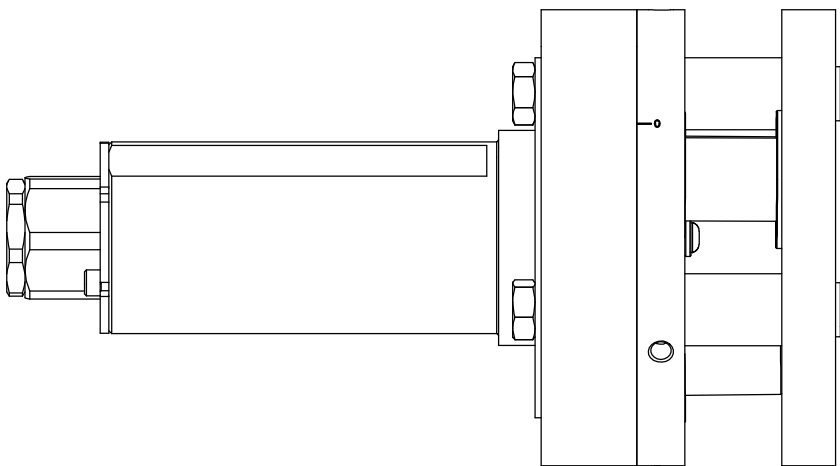
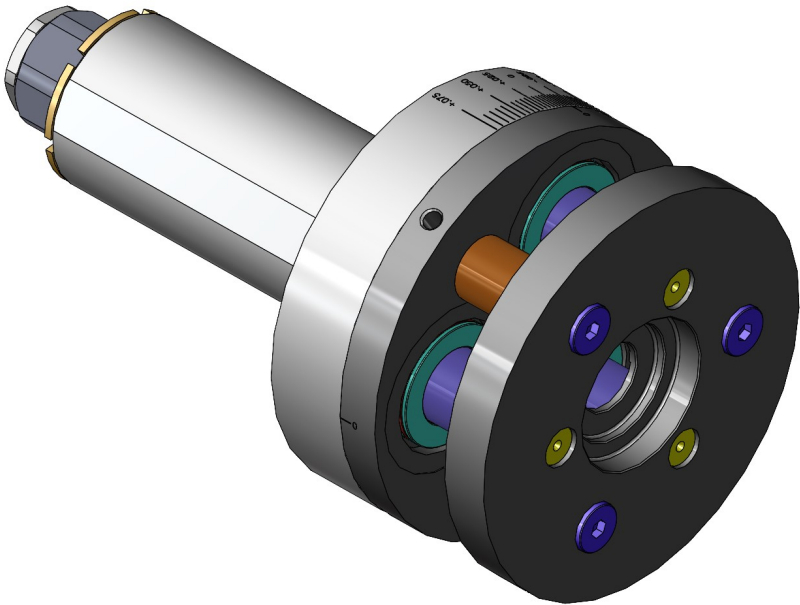
4

3

2

1

REV	ZONE	ECN	REVISION DESCRIPTION	DATE	ENG
A	....	....	Released	02/11	PA



SECTION V-V  
SCALE 1 : 2

THIS DRAWING IS THE CONFIDENTIAL AND EXCLUSIVE PROPERTY OF C.J. WINTER MACHINE TECHNOLOGIES, INC. AND MAY NOT BE COPIED, REPRODUCED, OR DISCLOSED IN ANY WAY, WHATSOEVER TO ANYONE WITHOUT THE EXPRESS WRITTEN PERMISSION OF C.J. WINTER MACHINE TECHNOLOGIES, INC. UNLAWFUL DISCLOSURE MAY RESULT IN PROSECUTION

UNLESS OTHERWISE SPECIFIED:  
DRAWING MUST COMPLY TO  
C. J. WINTER ENGINEERING  
STANDARD E1058 & ASME  
Y14.5M 1994. UNTOLERANCED  
DIMENSIONS ARE BASIC

 .020 A B C SW

DRAWN BY: P. Allart  
DWG DATE: 02/23/11  
ENG. APPR: ...  
APPR DATE: ...  
MATERIAL: ...  
HEAT TRT: ...



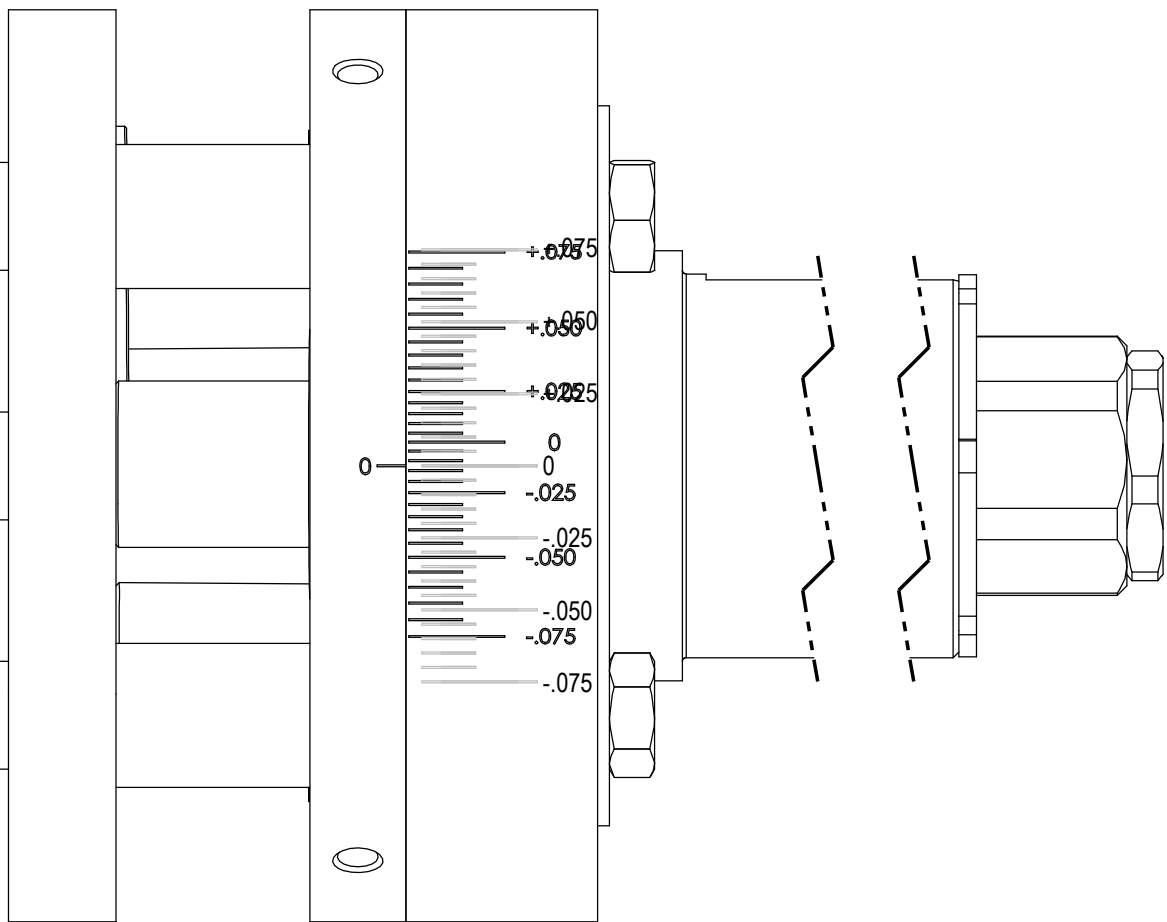
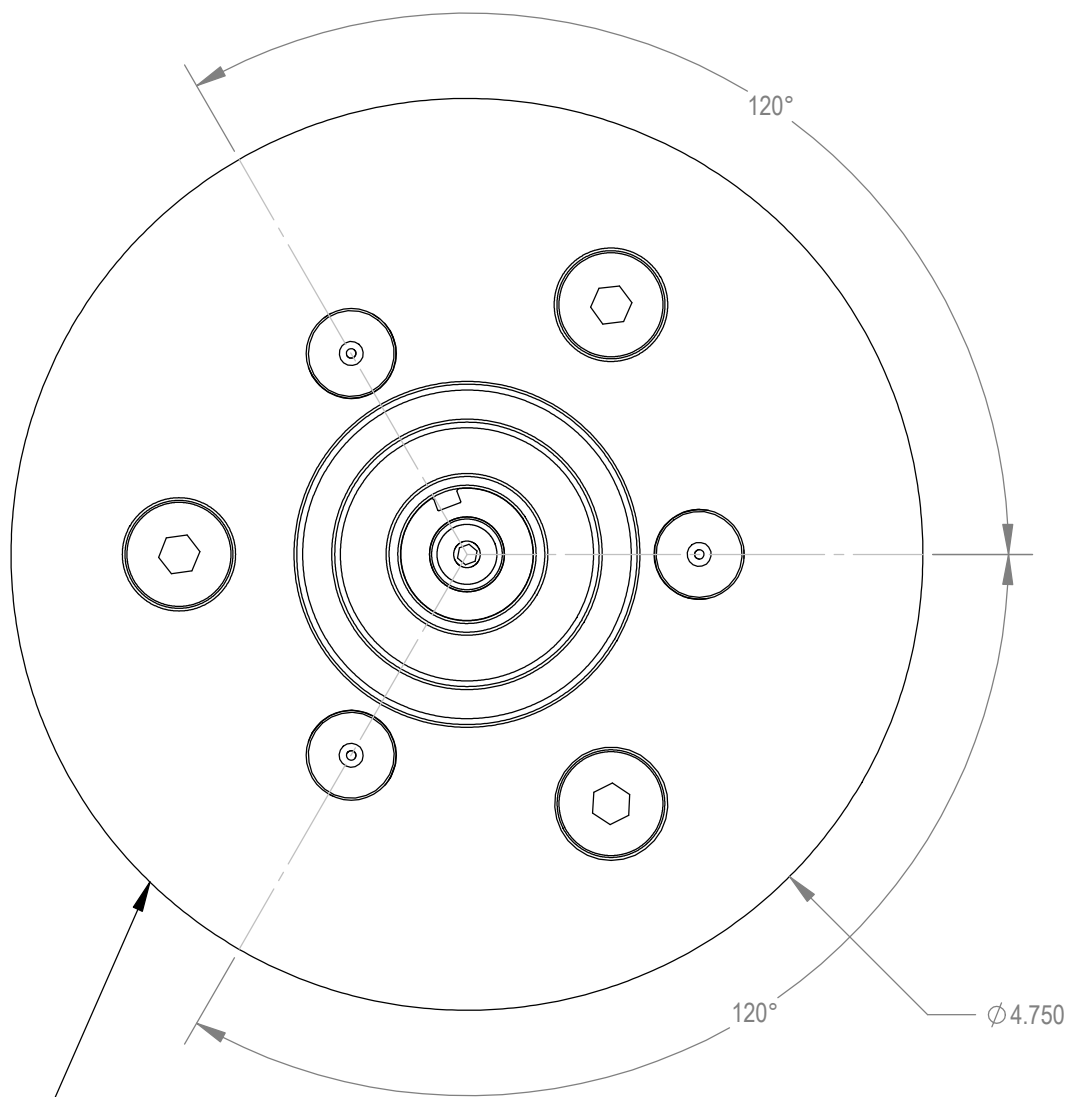
**C. J. WINTER**  
MACHINE TECHNOLOGIES, INC.

Spline Attachment

DWG SIZE  
**B**  
SCALE: 1:4  
SHEET 2 OF 3  
DRAWING NO.  
**192 ES-06**

# LaserMarking Detail

REV	ZONE	ECN	REVISION DESCRIPTION	DATE	ENG
A	....	....	Released	02/11	PA



Scale	Chordal position
0.075	1.035
0.070	0.941
0.065	0.850
0.060	0.764
0.055	0.682
0.050	0.604
0.045	0.529
0.040	0.458
0.035	0.390
0.030	0.325
0.025	0.264
0.020	0.205
0.015	0.149
0.010	0.097
0.005	0.047
0.000	0.000
-0.005	-0.047
-0.010	-0.097
-0.015	-0.149
-0.020	-0.205
-0.025	-0.264
-0.030	-0.325
-0.035	-0.390
-0.040	-0.458
-0.045	-0.529
-0.050	-0.604
-0.055	-0.682
-0.060	-0.764
-0.065	-0.850
-0.070	-0.941
-0.075	-1.035

Mark Scale in 3 Places, Every 120°  
Visually Align -0- with roll pin within +/- 10°

PRIOR TO MARKING - SET HEAD TO CENTER OF ADJUSTMENT

- 1) Loosen 3 Hex Bolts Near Shank
- 2) Twist Head Until Fully Closed, Mark Across Both Parts w/ Sharpie
- 3) Twist Head Until Fully Open, Mark Across Both Parts w/ Sharpie
- 4) Adjust Until Mark on Head is Exactly 1/2 way Between Sharpie Marks
- 5) Tighten Hex Bolts

THIS DRAWING IS THE CONFIDENTIAL AND EXCLUSIVE PROPERTY OF C.J. WINTER MACHINE TECHNOLOGIES, INC. AND MAY NOT BE COPIED, REPRODUCED, OR DISCLOSED IN ANY WAY, WHATSOEVER TO ANYONE WITHOUT THE EXPRESS WRITTEN PERMISSION OF C.J. WINTER MACHINE TECHNOLOGIES, INC. UNLAWFUL DISCLOSURE MAY RESULT IN PROSECUTION

UNLESS OTHERWISE SPECIFIED:  
DRAWING MUST COMPLY TO  
C. J. WINTER ENGINEERING  
STANDARD E1058 & ASME  
Y14.5M 1994. UNTOLERANCED  
DIMENSIONS ARE BASIC

 .020 A B C SW

DRAWN BY: P. Allart  
DWG DATE: 02/23/11  
ENG. APPR: ...  
APPR DATE: ...  
MATERIAL: ..  
HEAT TRT:



**C. J. WINTER**  
MACHINE TECHNOLOGIES, INC.

Spline Attachment

DWG SIZE  
**B**  
SCALE: 1:4  
Sheet 3 of 3  
DRAWING NO.  
**192 ES-06**