

6

5

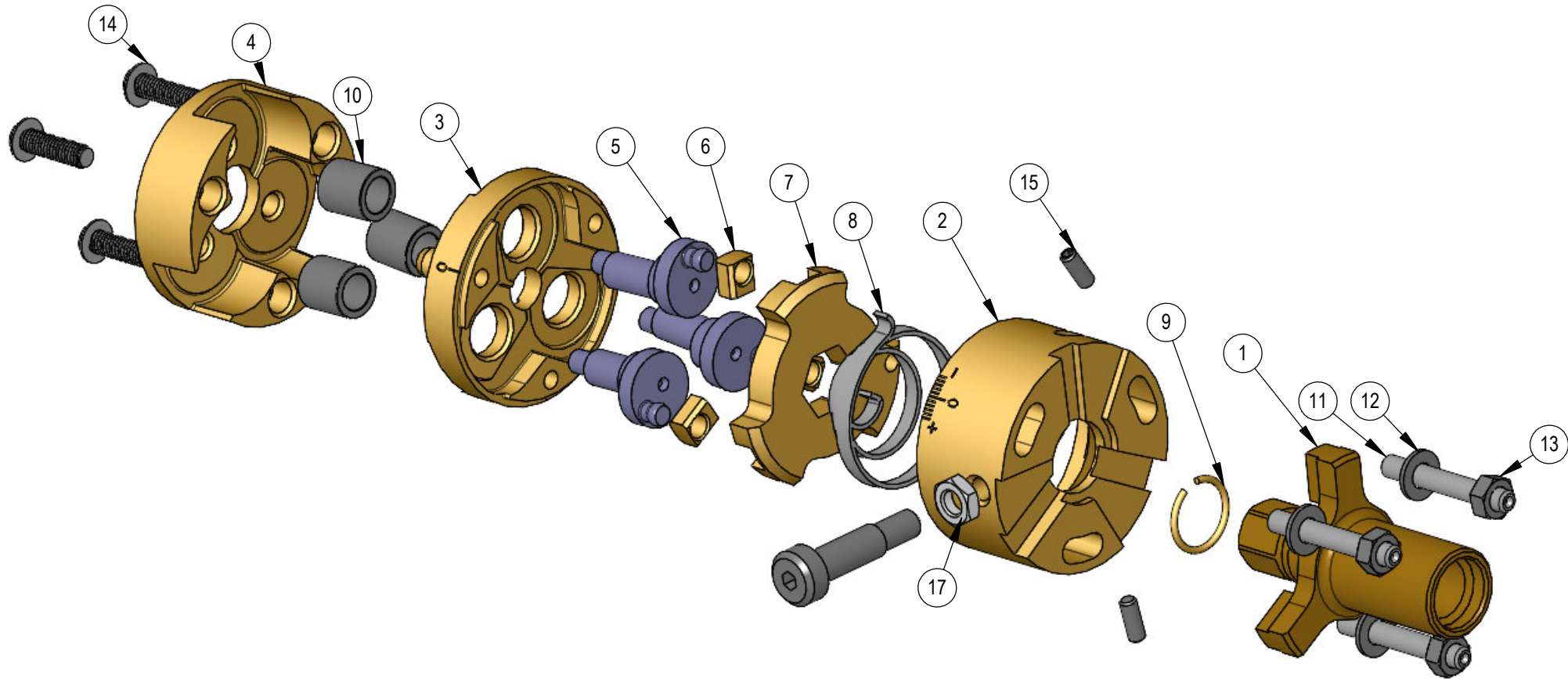
4

3

2

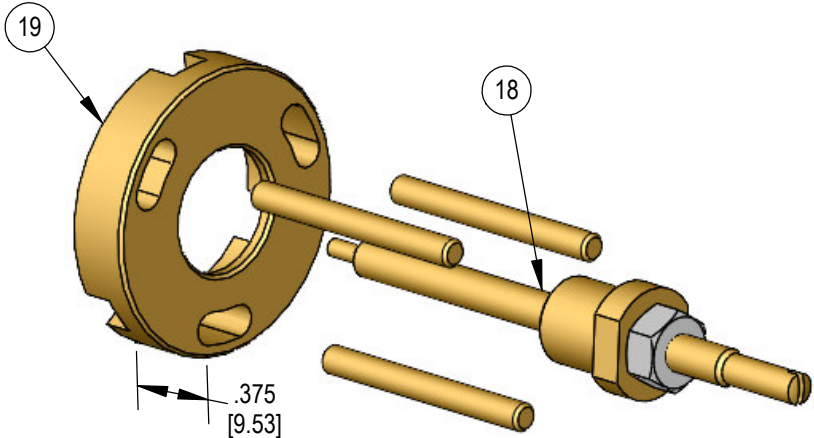
1

REV	ZONE	ECN	REVISION DESCRIPTION	DATE	ENG
A	Released	08/04	DC
B	4597	189039 was 189029	09/05	DC
C	Added Section View/Dimensions	04/18	PA/PD

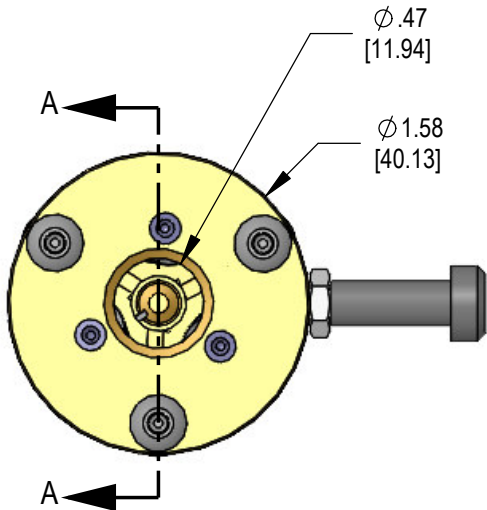
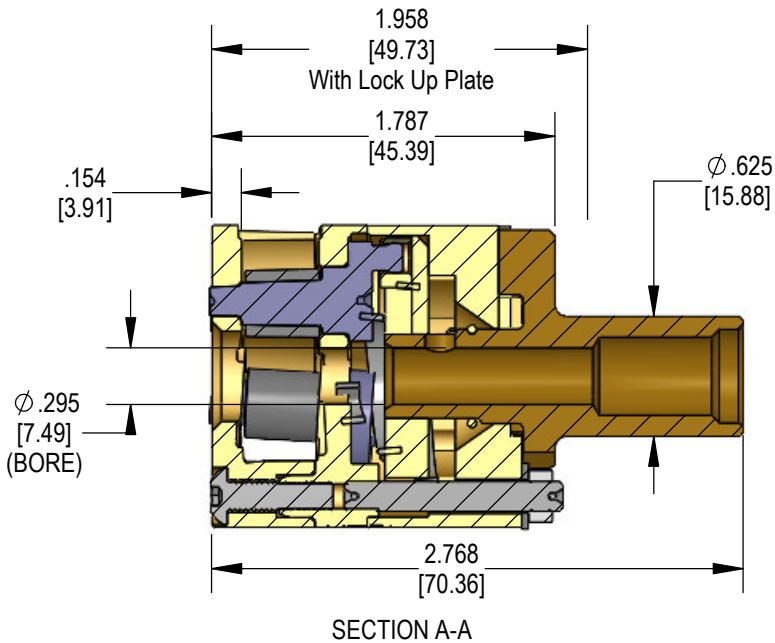


OPTIONAL Not included(sold separately)

Item #	PART NUMBER	DESCRIPTION	QTY.
18	189031	Internal Trip Mechanism	1
19	189040	Lock Up Plate - Includes three 189041	1



ITEM NO.	PART NUMBER	DESCRIPTION	QTY.
1	189001	Shaft	1
2	189002	Spring Housing	1
3	189003	Center Plate	1
4	189004	Front Plate	1
5	189005	Eccentric Roll Pin	3
6	189006	Retaining Block	3
7	189007	Clutch Plate	1
8	189010	Spring: Tapered Coil, 1.25 OD x .620 OAL x 80 deg.	1
9	189012	Ring: Retaining, .488 dia. x .047	1
10	189013	Carbide Roll Bushing	3
11	189036	Stud	3
12	189026	Washer: Flat, M4	3
13	189037	Nut: Hex, M4 x 0.7	3
14	189039	Screw: BHCS, M4 x 0.7 x 14mm	3
15	189034	Screw: SSS, M3 x .5 x 8MM	2
16	189032	Screw: SHSS, M5-.8x16mm	1
17	189030	Nut: Hex, M5 x 0.8	1



THIS DRAWING IS THE CONFIDENTIAL AND EXCLUSIVE PROPERTY OF C.J. WINTER MACHINE TECHNOLOGIES, INC. AND MAY NOT BE COPIED, REPRODUCED, OR DISCLOSED IN ANY WAY, WHATSOEVER TO ANYONE WITHOUT THE EXPRESS WRITTEN PERMISSION OF C.J. WINTER MACHINE TECHNOLOGIES, INC. UNLAWFUL DISCLOSURE MAY RESULT IN PROSECUTION
© 2004 C.J. WINTER MACHINE TECHNOLOGIES, INC.

UNLESS OTHERWISE SPECIFIED:
DRAWING MUST COMPLY TO
C. J. WINTER ENGINEERING
STANDARD E1058 & ASME
Y14.5M 1994. UNTOLERANCED
DIMENSIONS ARE BASIC

DRAWN BY: D. Cole
DWG DATE: 09/09/05
ENG. APPR: P.A
APPR DATE: 04/9/21
MATERIAL:
HEAT TRT:



C. J. WINTER
MACHINE TECHNOLOGIES, INC.

DWG SIZE
SCALE: 1:1
B
SHEET 1 OF 1

189 End Rolling Attachment

DRAWING NO.
189 ER-01