

6

5

4

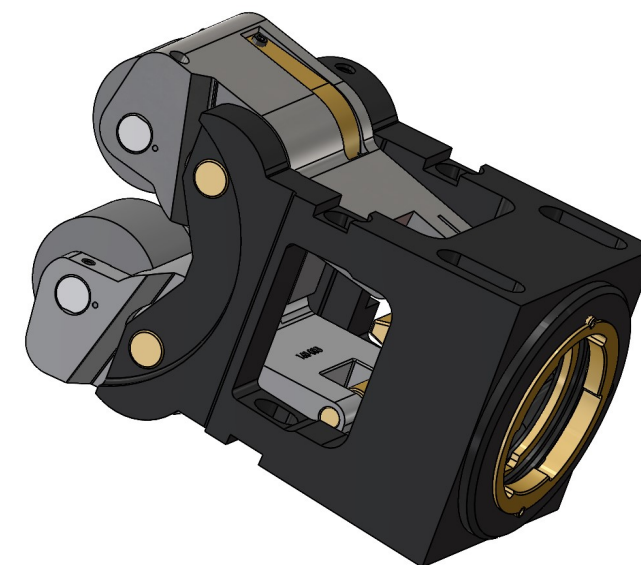
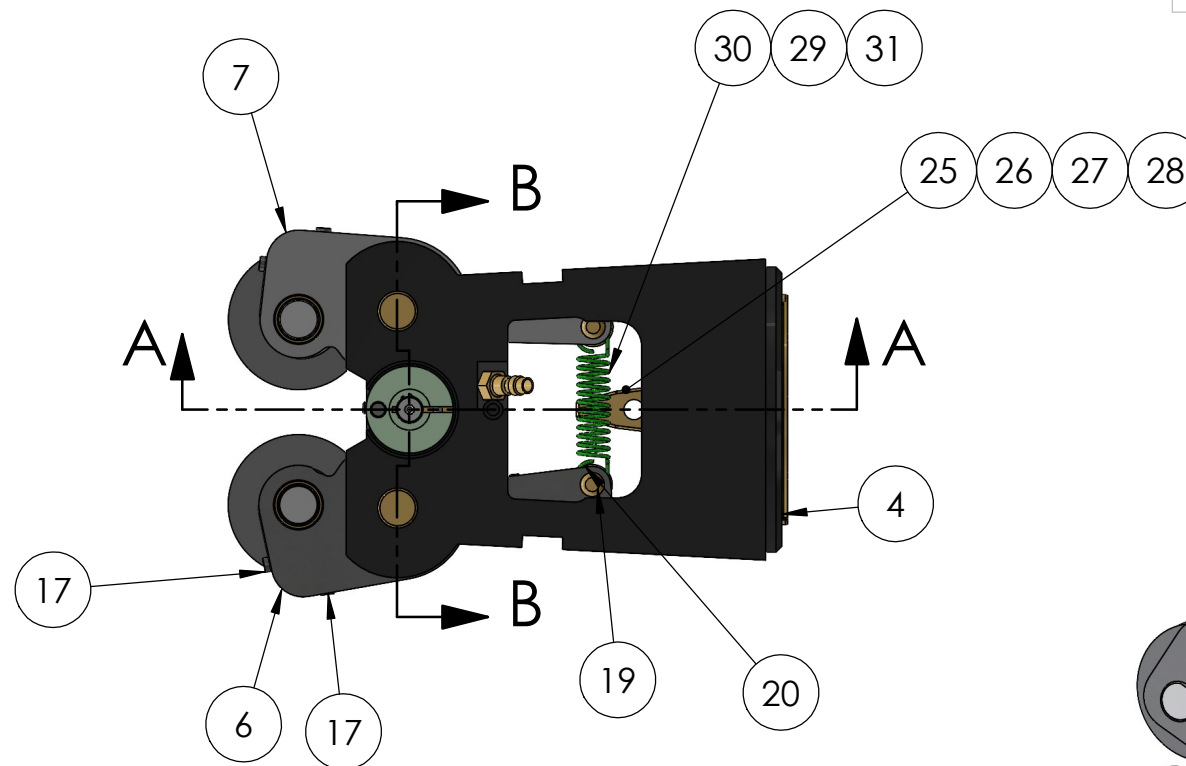
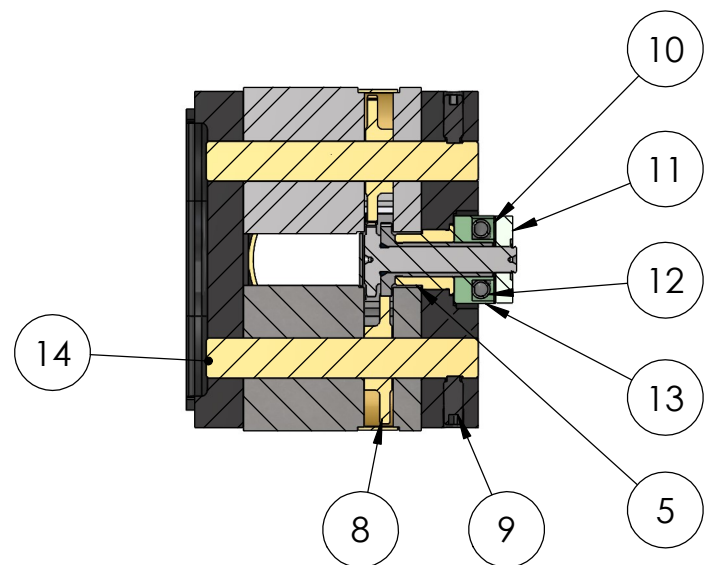
3

2

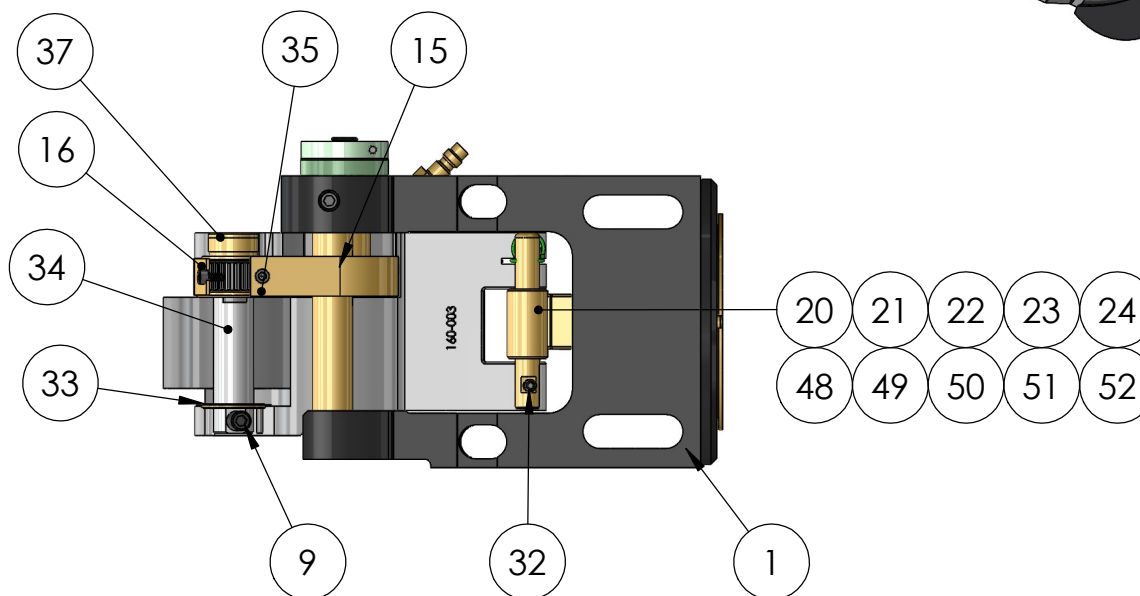
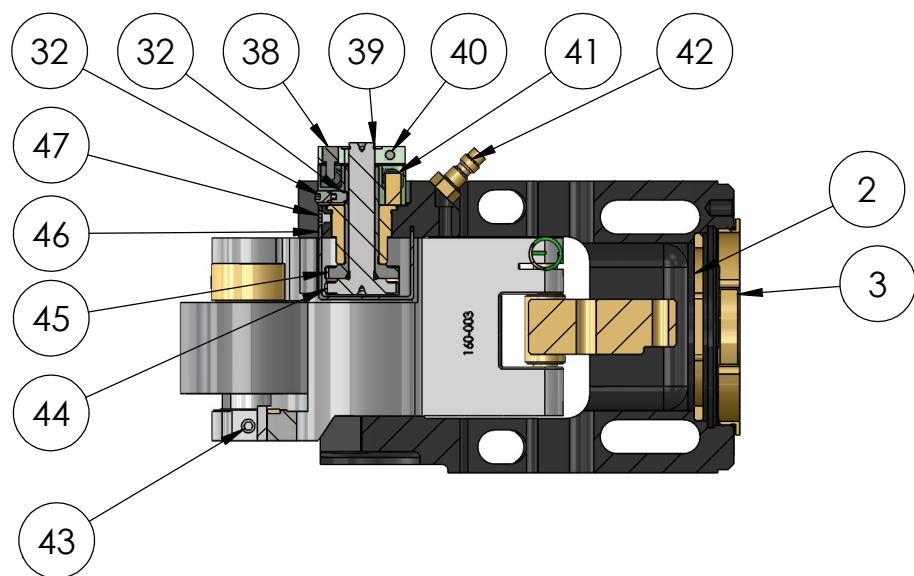
1

REV	ZONE	ECN	REVISION DESCRIPTION	DATE	ENG
F	Redrawn in Solidworks	2/22	NA

SECTION B-B



SECTION A-A



THIS DRAWING IS THE CONFIDENTIAL AND EXCLUSIVE PROPERTY OF C.J. WINTER MACHINE TECHNOLOGIES, INC. AND MAY NOT BE COPIED, REPRODUCED, OR DISCLOSED IN ANY WAY, WHATSOEVER TO ANYONE WITHOUT THE EXPRESS WRITTEN PERMISSION OF C.J. WINTER MACHINE TECHNOLOGIES, INC. UNLAWFUL DISCLOSURE MAY RESULT IN PROSECUTION © 2004 C.J. WINTER MACHINE TECHNOLOGIES, INC.

UNLESS OTHERWISE SPECIFIED: DRAWING MUST COMPLY TO C. J. WINTER ENGINEERING STANDARD E1058 & ASME Y14.5M 1994. UNTOLERANCED DIMENSIONS ARE BASIC

DRAWN BY: N. Albornoz
 DWG DATE: 2/14/22
 ENG. APPR: P. Allart
 APPR DATE: 2/14/22
 MATERIAL:
 HEAT TRT:



DWG SIZE SCALE: 1:3
B Sheet1
 DRAWING NO.
161SA3

160915: Bracket Assembly

6

5

4

3

2

1

6				5				4				3				2				1			
ITEM NO.	PART NO.	DESCRIPTION	QTY.	ITEM NO.	PART NO.	DESCRIPTION	QTY.	ITEM NO.	PART NO.	DESCRIPTION	QTY.	ITEM NO.	PART NO.	DESCRIPTION	QTY.	ITEM NO.	PART NO.	DESCRIPTION	QTY.				
1	160151QR	Quick Release Roll Arm Bracket (SA3)	1	29	160034	Roll Arm Spring, Red	1																
2	160417	Quick Release Washer	1	30	160035	Roll Arm Spring, Green	1																
3	160416	Quick Release Adapter	1	31	160130	Roll Arm Spring, Yellow	1																
4	838-19	Pin: Spring, .188 Dia x .500	2	32	160054	Screw: SSS, #10-32 x 0.250 Half Dog Pt.	4																
5	160048	Compensator Bushing	1	33	160098	Roll Arm Thrust Washer	2																
6	160002	L.H. Roll Arm	1	34	160044	Carbide Roll Pin	2																
7	160003	R.H. Roll Arm	1	35	160043	Roll Gear Washer	2																
8	160005	Idler Gear	2	36	160006	Roll Gear	2																
9	160103	Screw: SSS, 5/16-18 x .750 Half Dog Pt.	4	37	160097	Roll Arm Thrust Bushing	2																
10	160102	Cover Plate	1	38	160052	Adjusting Collar Pin	1																
11	160092	Adjusting Collar	1	39	160108	Retainer Ring, Bowed: .394 Dia	1																
12	160051	Compensator Spring	2	40	141379	Screw: SHCS, #6-32 x .500	1																
13	160050	Spring Retainer	1	41	160053	Pin: Dowel, .250 Dia. x .500	1																
14	160145	Fulcrum Pin (New Style)	2	42	125070	Quick Disconnect Plug	1																
15	160046	Idler Gear Guard	2	43	140280	Screw: SSS, 1/4-28 x .250 Half Dog	2																
16	160045	Roll Gear Guard	2	44	160093	Internal Gear	1																
17	140207	Screw: SHCS, #6-32 x .250	4	45	160004	External Gear	1																
18	160099	Pin: Dowel, .094 dia. x .438	2	46	160085	Center Gear Guard	1																
19	160091	Wedge Roller Pin	2	47	160086	Screw: FHSS, #6-32 x .188	1																
20	160025	Wedge Roller (.625 Dia)	2	48	160007	Wedge Roller (1.075 Dia)	2																
21	160026	Wedge Roller (.750 Dia)	2	49	160402	Wedge Roller (.688 Dia.)	2																
22	160027	Wedge Roller (.875 Dia)	2	50	160403	Wedge Roller (.813 dia.)	2																
23	160028	Wedge Roller (1.000 Dia)	2	51	160405	Wedge Roller (.938 dia.)	2																
24	160029	Wedge Roller (1.312 Dia)	2	52	160406	Wedge Roller (1.156 Dia.)	2																
25	160030	Wedge, Narrow	1																				
26	160031	Wedge, Medium	1																				
27	160032	Wedge, Large	1																				
28	160033	Wedge, Ex-Large	1																				

REV	ZONE	ECN	REVISION DESCRIPTION	DATE	ENG
F	Redrawn in Solidworks	2/22	NA

161SA3
Components
160915: Bracket Assembly- shown here
161100QR: Power Pack Assembly- not shown
141600: Control Valve Assembly-not shown
Serial No. Range
161013-Current

THIS DRAWING IS THE CONFIDENTIAL AND EXCLUSIVE PROPERTY OF C.J. WINTER MACHINE TECHNOLOGIES, INC. AND MAY NOT BE COPIED, REPRODUCED, OR DISCLOSED IN ANY WAY, WHATSOEVER TO ANYONE WITHOUT THE EXPRESS WRITTEN PERMISSION OF C.J. WINTER MACHINE TECHNOLOGIES, INC. UNLAWFUL DISCLOSURE MAY RESULT IN PROSECUTION © 2004 C.J. WINTER MACHINE TECHNOLOGIES, INC.

UNLESS OTHERWISE SPECIFIED: DRAWING MUST COMPLY TO C. J. WINTER ENGINEERING STANDARD E1058 & ASME Y14.5M 1994. UNTOLERANCED DIMENSIONS ARE BASIC

DRAWN BY: N. Alborno
 DWG DATE: 2/14/22
 ENG. APPR: P. Allart
 APPR DATE: 2/14/22
 MATERIAL:
 HEAT TRT:

	C. J. WINTER MACHINE TECHNOLOGIES, INC.	DWG SIZE	SCALE: 1:3
		B	BOM
160915: Bracket Assembly		DRAWING NO. 161SA3	