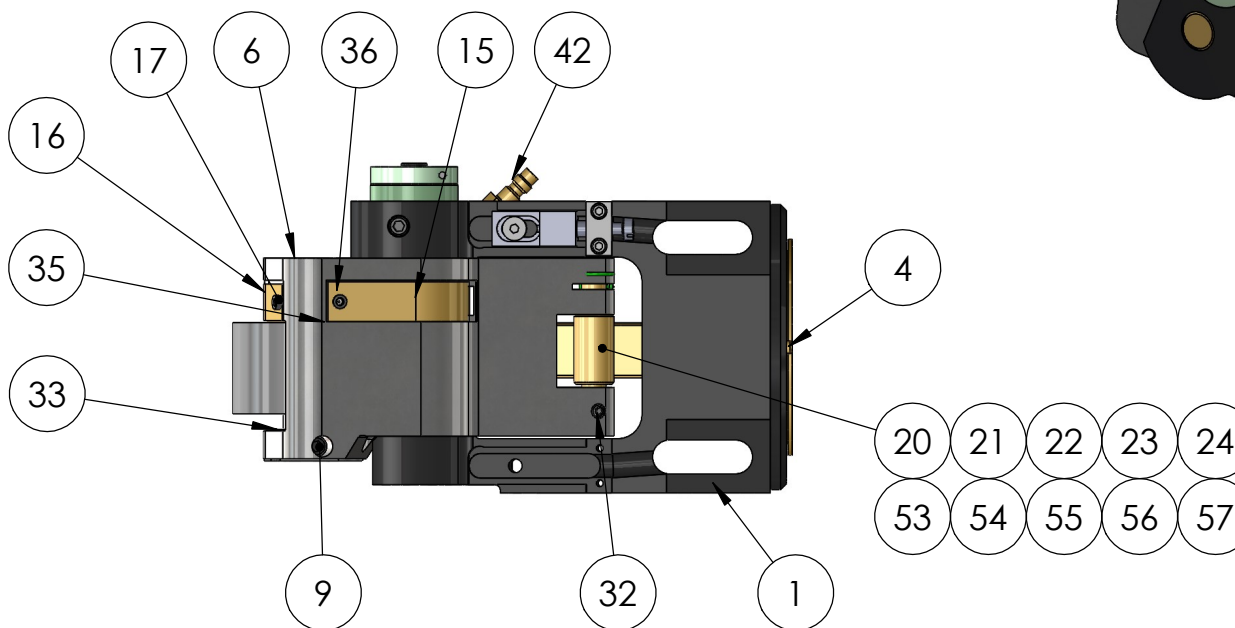
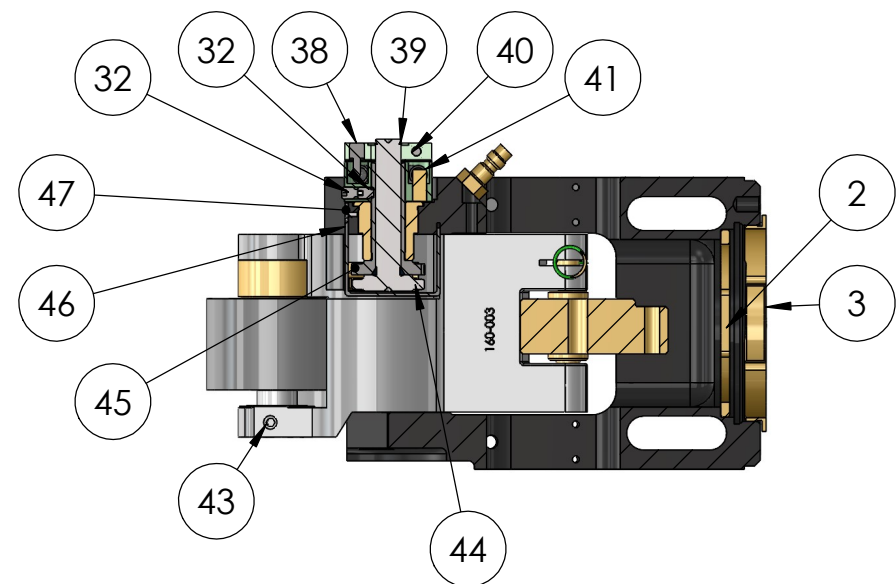
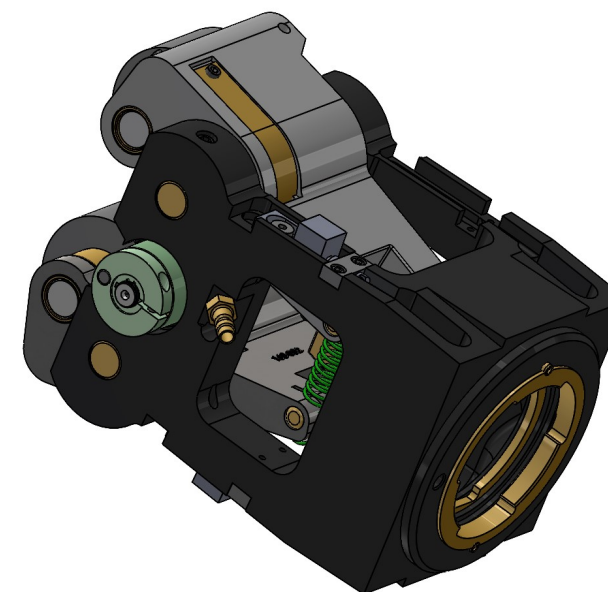
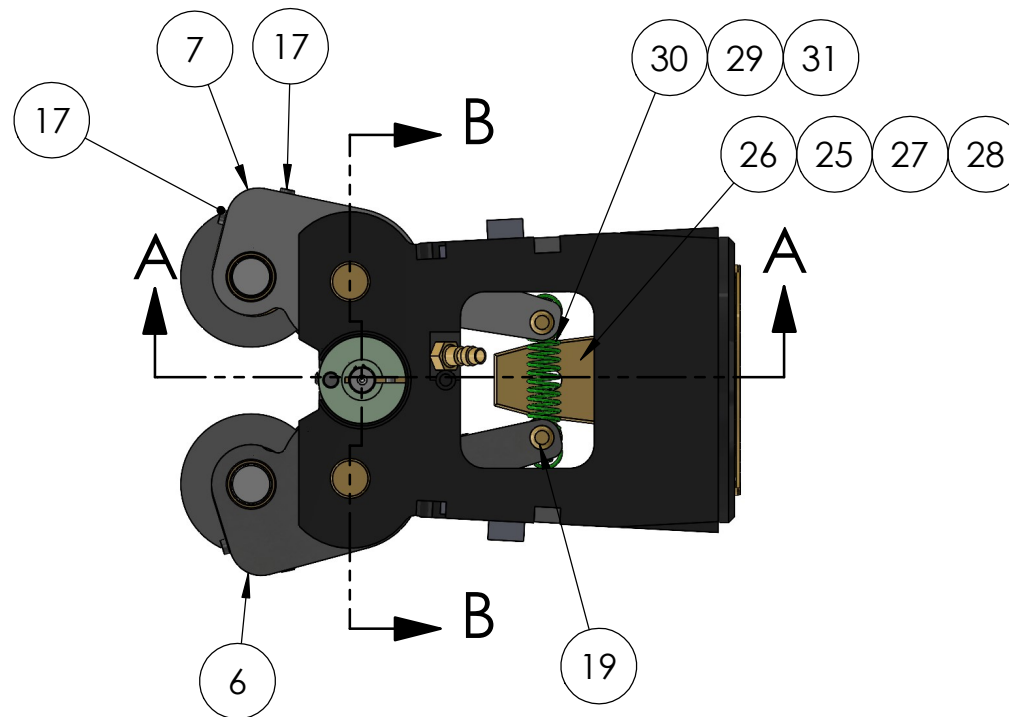
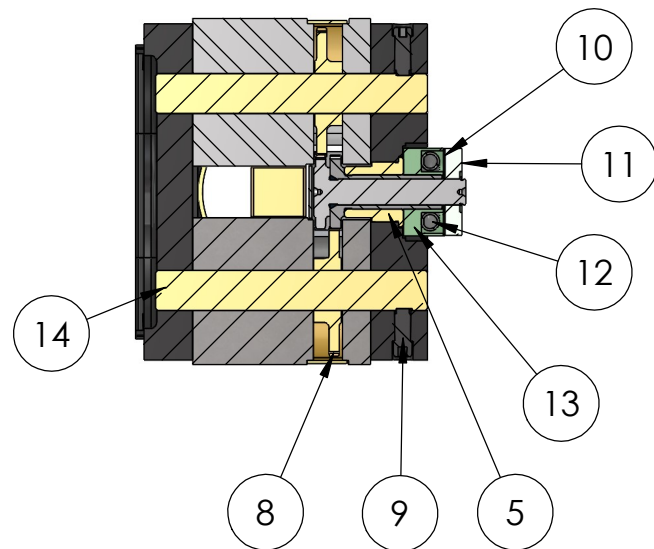


REV	ZONE	ECN	REVISION DESCRIPTION	DATE	ENG
F	Redrawn in Solidworks	2/22	NA

SECTION B-B



SECTION A-A

THIS DRAWING IS THE CONFIDENTIAL AND EXCLUSIVE PROPERTY OF C.J. WINTER MACHINE TECHNOLOGIES, INC. AND MAY NOT BE COPIED, REPRODUCED, OR DISCLOSED IN ANY WAY, WHATSOEVER, TO ANYONE WITHOUT THE EXPRESS WRITTEN PERMISSION OF C.J. WINTER MACHINE TECHNOLOGIES, INC. UNLAWFUL DISCLOSURE MAY RESULT IN PROSECUTION. © 2004 C.J. WINTER MACHINE TECHNOLOGIES, INC.

UNLESS OTHERWISE SPECIFIED: DRAWING MUST COMPLY TO C. J. WINTER ENGINEERING STANDARD E1058 & ASME Y14.5M 1994. UNTOLERANCED DIMENSIONS ARE BASIC
 .020 A B C SW

DRAWN BY: N. Albornoz
 DWG DATE: 2/14/22
 ENG. APPR: P. Allart
 APPR DATE: 2/14/22
 MATERIAL:
 HEAT TRT:



C. J. WINTER
 MACHINE TECHNOLOGIES, INC.

DWG SIZE SCALE: 1:3
B
 Sheet1

160914: Bracket Assembly

DRAWING NO.
160SA2

6				5				4				3			
ITEM NO.	PART NO.	DESCRIPTION	QTY.	ITEM NO.	PART NO.	DESCRIPTION	QTY.	ITEM NO.	PART NO.	DESCRIPTION	QTY.	ITEM NO.	PART NO.	DESCRIPTION	QTY.
1	160136QR	Quick Release Roll Arm Bracket (SA2)	1	30	160035	Roll Arm Spring, Green	1								
2	160417	Quick Release Washer	1	31	160130	Roll Arm Spring, Yellow	1								
3	160416	Quick Release Adapter	1	32	160054	Screw: SSS, #10-32 x 0.250 Half Dog Pt.	4								
4	838-19	Pin: Spring, .188 Dia x .500	2	33	160098	Roll Arm Thrust Washer	2								
5	160048	Compensator Bushing	1	34	160044	Carbide Roll Pin	2								
6	160002	L.H. Roll Arm	1	35	160043	Roll Gear Washer	2								
7	160003	R.H. Roll Arm	1	36	160006	Roll Gear	2								
8	160005	Idler Gear	2	37	160097	Roll Arm Thrust Bushing	2								
9	160103	Screw: SSS, 5/16-18 x .750 Half Dog Pt.	4	38	160052	Adjusting Collar Pin	1								
10	160102	Cover Plate	1	39	160108	Retainer Ring, Bowed: .394 Dia	1								
11	160092	Adjusting Collar	1	40	141379	Screw: SHCS, #6-32 x .500	1								
12	160051	Compensator Spring	2	41	160053	Pin: Dowel, .250 Dia. x .500	1								
13	160050	Spring Retainer	1	42	125070	Quick Disconnect Plug	1								
14	160145	Fulcrum Pin (New Style)	2	43	140280	Screw: SSS, 1/4-28 x .250 Half Dog	2								
15	160046	Idler Gear Guard	2	44	160093	Internal Gear	1								
16	160045	Roll Gear Guard	2	45	160004	External Gear	1								
17	140207	Screw: SHCS, #6-32 x .250	4	46	160085	Center Gear Guard	1								
18	160099	Pin: Dowel, .094 dia. x .438	2	47	160086	Screw: FHSS, #6-32 x .188	1								
19	160091	Wedge Roller Pin	2	48	160132	Adjustable Key	2								
20	160025	Wedge Roller (.625 Dia)	2	49	160133	Adjusting Screw	2								
21	160026	Wedge Roller (.750 Dia)	2	50	160134	Adjusting Screw Retainer	2								
22	160027	Wedge Roller (.875 Dia)	2	51	160135	Screw: LHCS, 1/4-28 x .500	2								
23	160028	Wedge Roller (1.000 Dia)	2	52	125174	Screw: SHCS, #6-32 x .375	4								
24	160029	Wedge Roller (1.312 Dia)	2	53	160007	Wedge Roller (1.075 Dia)	2								
25	160030	Wedge, Narrow	1	54	160402	Wedge Roller (.688 Dia.)	2								
26	160031	Wedge, Medium	1	55	160403	Wedge Roller (.813 dia.)	2								
27	160032	Wedge, Large	1	56	160405	Wedge Roller (.938 dia.)	2								
28	160033	Wedge, Ex-Large	1	57	160406	Wedge Roller (1.156 Dia.)	2								
29	160034	Roll Arm Spring, Red	1												

REV	ZONE	ECN	REVISION DESCRIPTION	DATE	ENG
F	Redrawn in Solidworks	2/22	NA

**160SA2
Components**

160914: Bracket Assembly- shown here
160911QR: Power Pack Assembly- not shown
141600: Control Valve Assembly-not shown
Serial No. Range
1601338-Current

THIS DRAWING IS THE CONFIDENTIAL AND EXCLUSIVE PROPERTY OF C.J. WINTER MACHINE TECHNOLOGIES, INC. AND MAY NOT BE COPIED, REPRODUCED, OR DISCLOSED IN ANY WAY, WHATSOEVER, TO ANYONE WITHOUT THE EXPRESS WRITTEN PERMISSION OF C.J. WINTER MACHINE TECHNOLOGIES, INC. UNLAWFUL DISCLOSURE MAY RESULT IN PROSECUTION
 © 2004 C.J. WINTER MACHINE TECHNOLOGIES, INC.

UNLESS OTHERWISE SPECIFIED: DRAWING MUST COMPLY TO C. J. WINTER ENGINEERING STANDARD E1058 & ASME Y14.5M 1994. UNTOLERANCED DIMENSIONS ARE BASIC

⌀ .020 A B C SW

DRAWN BY: N. Albornoz
 DWG DATE: 2/14/22
 ENG. APPR: P. Allart
 APPR DATE: 2/14/22
 MATERIAL:
 HEAT TRT:

	C. J. WINTER MACHINE TECHNOLOGIES, INC.	DWG SIZE	SCALE: 1:3
		B	BOM
160914: Bracket Assembly		DRAWING NO. 160SA2	

D
C
B
A

D
C
B
A