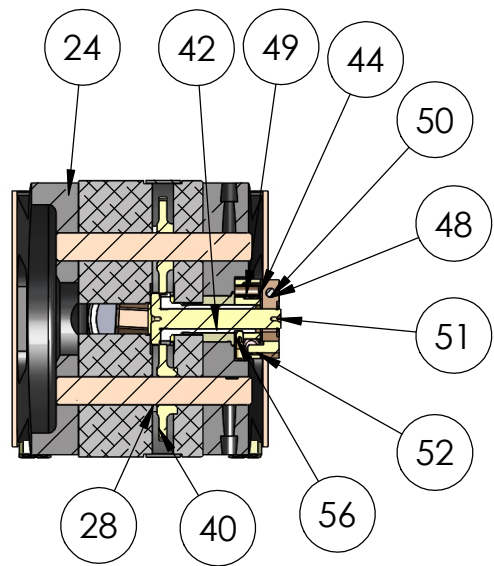
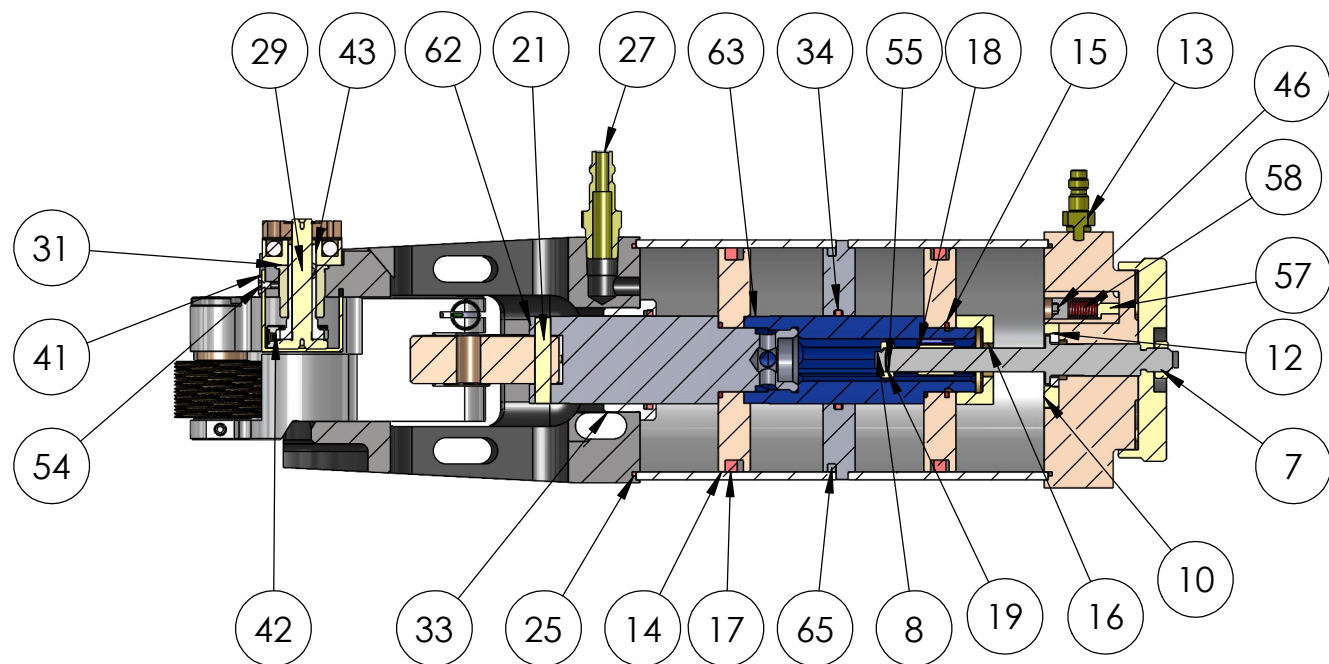
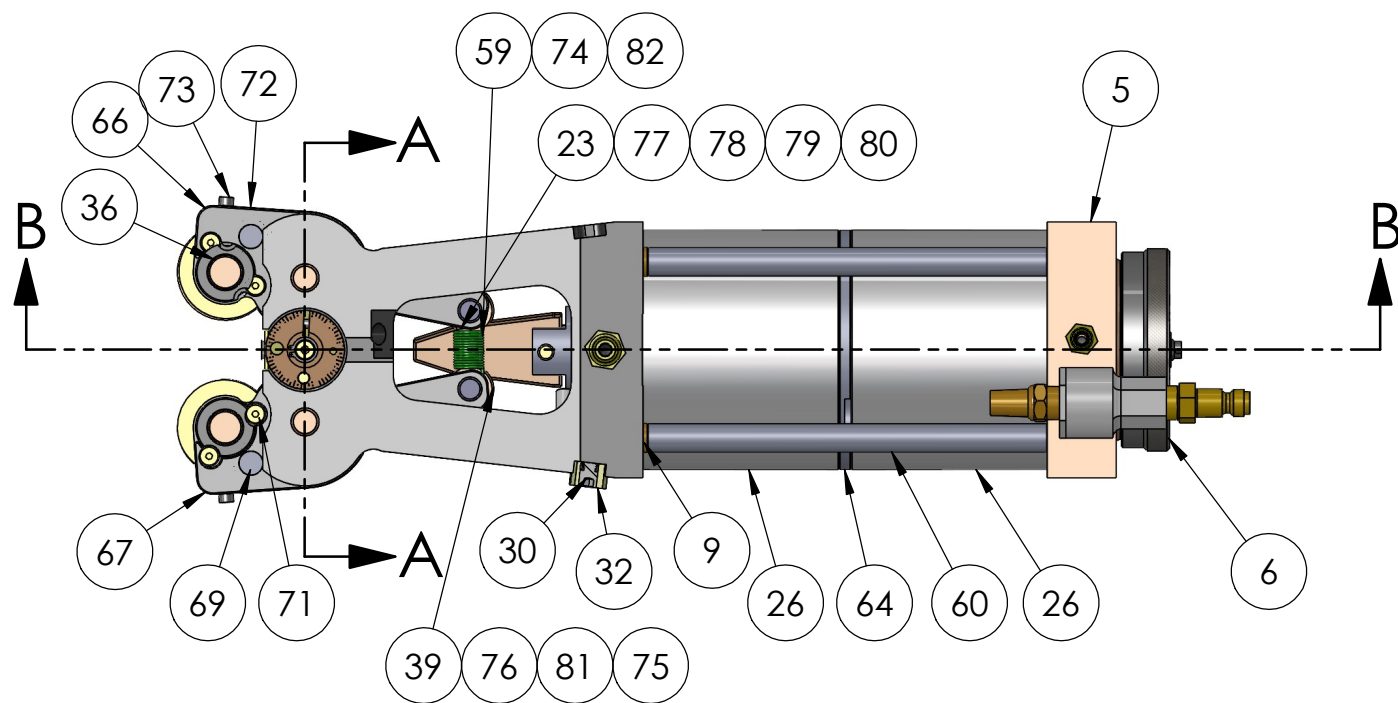


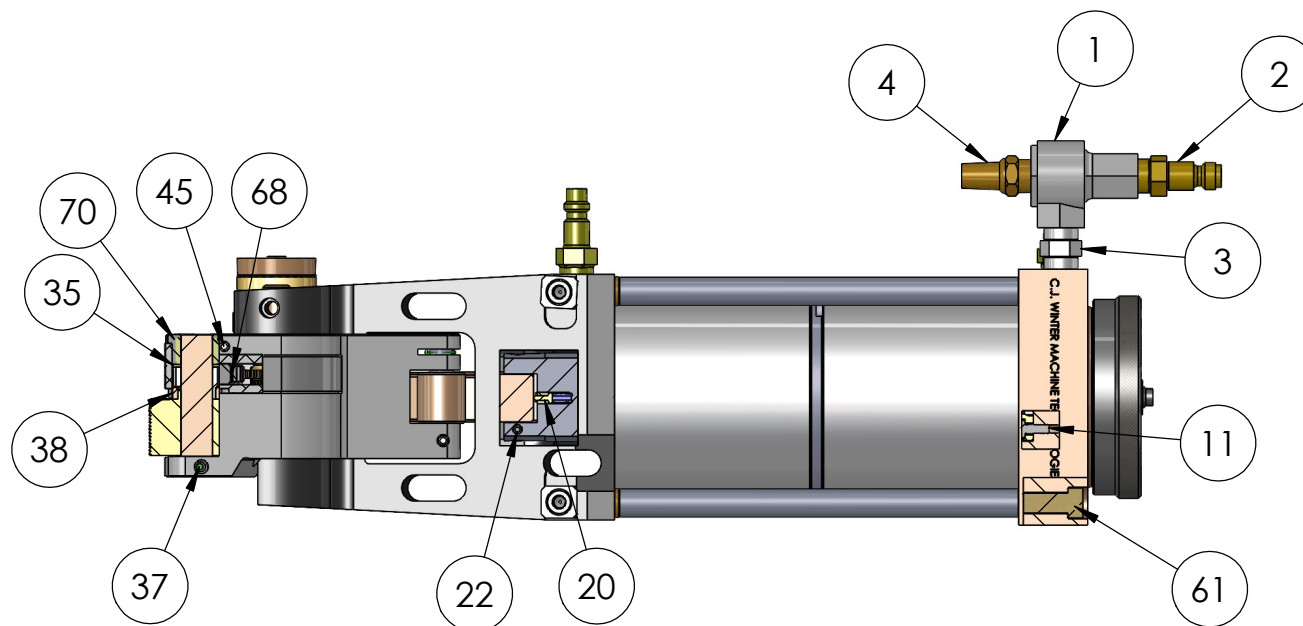
REV	ZONE	ECN	REVISION DESCRIPTION	DATE	ENG
F	...	...	Redrawn in Solidworks	3/22	NA



SECTION A-A



SECTION B-B



THIS DRAWING IS THE CONFIDENTIAL AND EXCLUSIVE PROPERTY OF C.J. WINTER MACHINE TECHNOLOGIES, INC. AND MAY NOT BE COPIED, REPRODUCED, OR DISCLOSED IN ANY WAY, WHATSOEVER TO ANYONE WITHOUT THE EXPRESS WRITTEN PERMISSION OF C.J. WINTER MACHINE TECHNOLOGIES, INC. UNLAWFUL DISCLOSURE MAY RESULT IN PROSECUTION © 2004 C.J. WINTER MACHINE TECHNOLOGIES, INC.

UNLESS OTHERWISE SPECIFIED: DRAWING MUST COMPLY TO C. J. WINTER ENGINEERING STANDARD E-1058 & ASME Y14.5M 1994. UNTOLERANCED DIMENSIONS ARE BASIC  
 .020 A B C SW

DRAWN BY: E. Alley  
 DWG DATE: 2/6/2024  
 ENG. APPR: ---  
 APPR DATE: ---  
 MATERIAL: ---  
 HEAT TRT: ---



152925: Attachment Assembly

DWG SIZE SCALE: 1:4  
**B** Sheet1

DRAWING NO.  
**152SA**

6				5				4				3				2				1			
ITEM NO.	PART NO.	DESCRIPTION	QTY.	ITEM NO.	PART NO.	DESCRIPTION	QTY.	ITEM NO.	PART NO.	DESCRIPTION	QTY.	ITEM NO.	PART NO.	DESCRIPTION	QTY.	REV	ZONE	ECN	REVISION DESCRIPTION	DATE	ENG		
																F	....	....	Redrawn in Solidworks	3/22	NA		
1	134069	Valve: Quick Exhaust	1	34	141360	O-Ring: 1.56 OD x 1.38 ID x 0.094 W	2																
2	141369	Quick Disconnect Plug	1	35	141384	Roll Arm Thrust Bushing	2	61	142004	Screw: SHC, 5/16-24 x 7.62	4												
D 3	141705	Close Nipple	1	36	141273	Carbide Roll Pin	2	62	142001	Cylinder Front Shaft	1												
4	141704	Muffler	1	37	141367	Screw: SSS, #10-32 x .50 Half Dog Pt. w/Nylon	2	63	142002	Cylinder Rear Shaft	1												
5	141511	Cylinder End Plate, (Poppet)	1	38	141394	Roll Gear w/ Heavy Duty Tang	2	64	142003	Baffle Plate	1												
6	141362	Adjusting Knob	1	39	140220	Wedge Roller (.750 Dia)	2	65	142006	O-Ring: 3.50 OD x 3.25 ID x .125 W	1												
7	141375	Stop Nut	1	40	140234	Idler Gear	2	66	151001	R. H. Roll Arm	1												
8	160411	Adjusting Screw (Poppet)	1	41	140214	Compensator Center Guard	1	67	151002	L. H. Roll Arm	1												
9	141373	Cover Tube Washer	4	42	141389	External Gear	1	68	151003	Intermediate Idler Gear	2												
10	160412	O-Ring Retainer	1	43	140216	Spring Retainer	1	69	151004	Intermediate Idler Gear Pin	2												
C 11	160413	Screw: LHCS, #8-32 x .375	3	44	141378	Cover Plate	1	70	151007	Roll Arm Thrust Bushing	2												
12	160414	O-Ring: .824 OD x .546 ID x .139 W	1	45	160054	Screw: SSS, #10-32 x .250 Half Dog Pt.	6	71	151008	Screw: LHCS, #10-32 x .375	4												
13	141370	Quick Disconnect Plug	1	46	140305	Screw: SPP, 1/8-27 PTF x .250	3	72	151009	Idler Gear Guard	2												
14	141351	Piston	2	47	141382	Internal Gear	1	73	140207	Screw: SHCS, #6-32 x .250	2												
15	141390	O-Ring: 1.00 OD x 0.88 ID x 0.063 W	2	48	141383	Adjusting Collar	1	74	140208	Roll Arm Spring-Short (Red)	1												
16	141354	Retainer Nut	1	49	140285	Pin Spring .188 Dia x .375	1	75	140219	Wedge Roller (.625 Dia.)	2												
17	140256	O-Ring: 3.50 OD x 3.13 ID x .188 W	2	50	141379	Screw: SHCS, #6-32 x .500	1	76	140221	Wedge Roller (.875 Dia.)	2												
18	140263	Adjusting Screw Nut	1	51	141380	Compensator Retaining Ring 5/16 Dia.	1	77	140235	Wedge, Narrow	1												
19	141375	Stop Nut (.063 hole)	1	52	140282	Adjusting Collar Pin	1	78	140237	Wedge, Large	1												
20	141377	Plunger Assembly	2	53	140281	Compensator Spring	2	79	140238	Wedge, Ex-Large	1												
B 21	141358	Wedge Adapter Pin	1	54	160086	Screw: FHSS, #6-32 x .188	1	80	151006	Wedge, Auxiliary	1												
22	141368	Screw: SSS, #8-32 x .250 Cup Pt.	1	55	160140	Pin: Spring, .063 dia x .438	1	81	140378	Wedge Roller (.688 Dia)	2												
23	140236	Wedge, Medium	1	56	125018	Screw: SSS, #4-40 x 0.175 HLF Dog Backer	1	82	141391	Roll Arm Spring-Medium (Yellow)	1												
24	141200	Roll Arm Bracket	1	57	141363	Plunger- Adj. Knob	3	83	140229	Wedge Roller Pin	2												
25	140257	O-Ring: 3.63 OD x 3.50 ID x .063 W	2	58	141364	Spring: Compression, .300 OD x .813	3																
26	141353	Cylinder	2	59	140222	Roll Arm Spring	1																
27	141372	Quick Disconnect Plug	1	60	142005	Cover Tube	4																
28	140202	Fulcrum Pin	2																				
29	140294	SSS 1/4-28 x .750	2																				
A 30	140204	Screw: SHCS, 1/4-28 x .375	2																				
31	141388	Compensator Bushing	1																				
32	140203	Key	2																				
33	141355	Cylinder Shaft Bushing	1																				

**Components**  
**152925: Attachment Assembly-shown here**  
**141600: Control Valve Assembly- not shown**  
  
**Serial No. Range**  
**152017-Current**

<small>THIS DRAWING IS THE CONFIDENTIAL AND EXCLUSIVE PROPERTY OF C.J. WINTER MACHINE TECHNOLOGIES, INC. AND MAY NOT BE COPIED, REPRODUCED, OR DISCLOSED IN ANY WAY, WHATSOEVER, TO ANYONE WITHOUT THE EXPRESS WRITTEN PERMISSION OF C.J. WINTER MACHINE TECHNOLOGIES, INC. UNLAWFUL DISCLOSURE MAY RESULT IN PROSECUTION © 2004 C.J. WINTER MACHINE TECHNOLOGIES, INC.</small>	<small>UNLESS OTHERWISE SPECIFIED: DRAWING MUST COMPLY TO C. J. WINTER ENGINEERING STANDARD E1058 &amp; ASME Y14.5M 1994. UNTOLERANCED DIMENSIONS ARE BASIC</small> 	DRAWN BY:--- DWG DATE:--- ENG. APPR: APPR DATE:--- MATERIAL:--- HEAT TRT:		DWG SIZE <b>B</b> SCALE: 1:4 BOM
		152925: Attachment Assembly		DRAWING NO. <b>152SA</b>

D

D

C

C

B

B

A

A