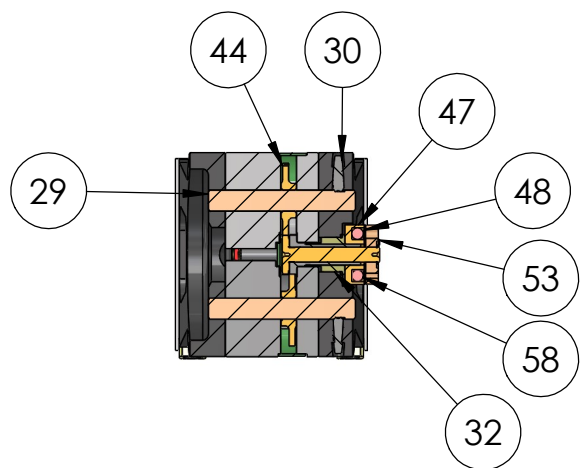
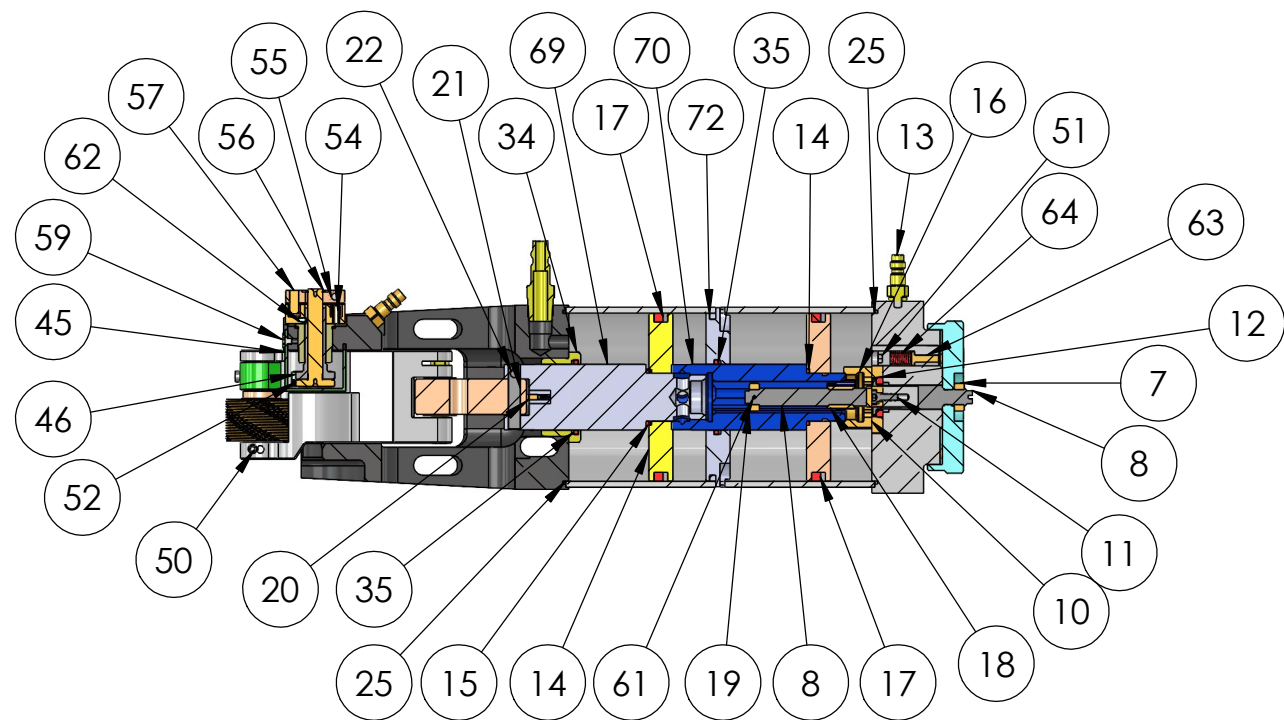
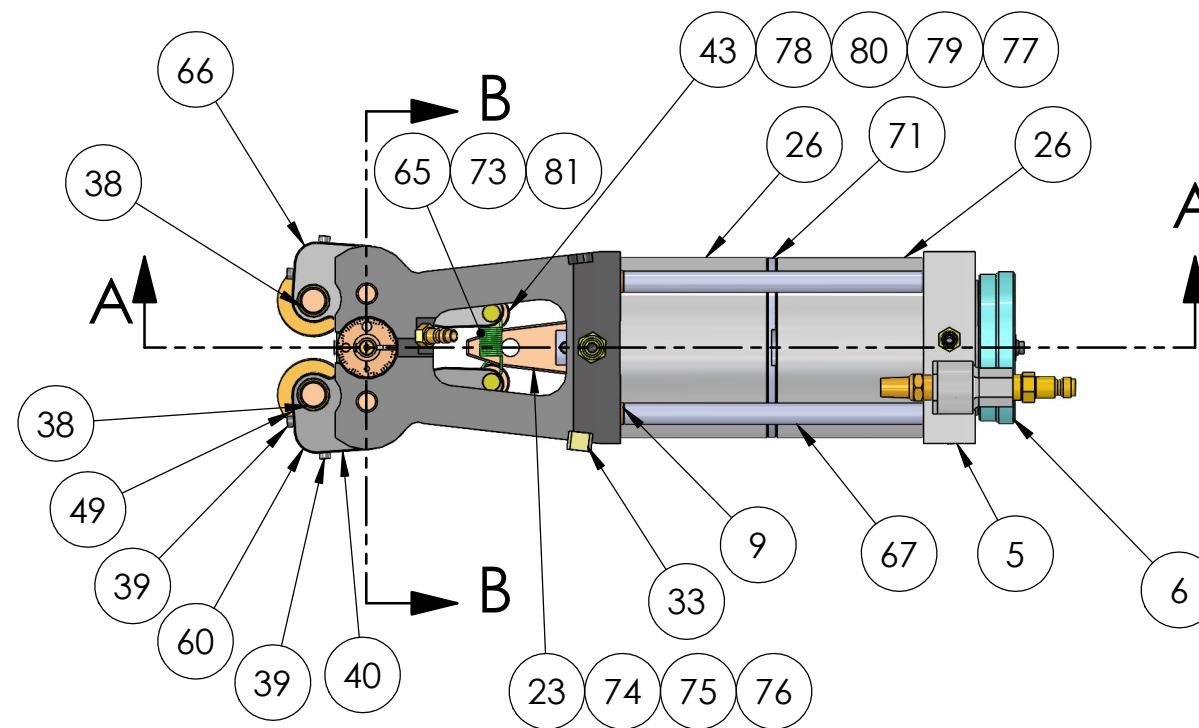


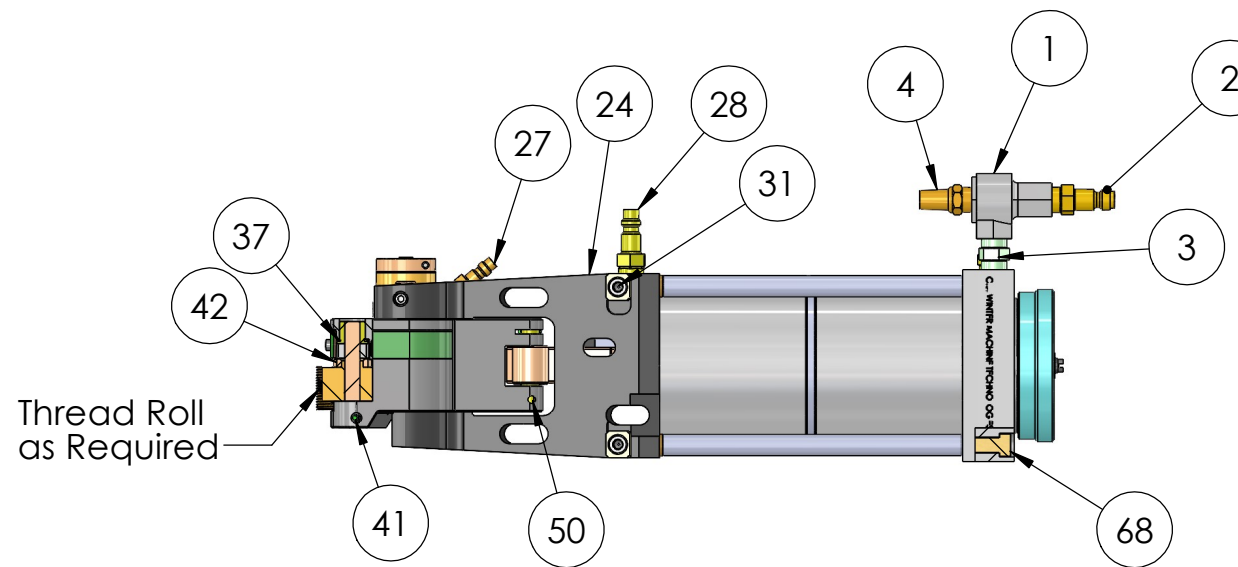
REV	ZONE	ECN	REVISION DESCRIPTION	DATE	ENG
F	...	...	Redrawn in Solidworks	3/22	NA



SECTION B-B



SECTION A-A



Thread Roll as Required

THIS DRAWING IS THE CONFIDENTIAL AND EXCLUSIVE PROPERTY OF C.J. WINTER MACHINE TECHNOLOGIES, INC. AND MAY NOT BE COPIED, REPRODUCED, OR DISCLOSED IN ANY WAY, WHATSOEVER TO ANYONE WITHOUT THE EXPRESS WRITTEN PERMISSION OF C.J. WINTER MACHINE TECHNOLOGIES, INC. UNLAWFUL DISCLOSURE MAY RESULT IN PROSECUTION © 2004 C.J. WINTER MACHINE TECHNOLOGIES, INC.

UNLESS OTHERWISE SPECIFIED: DRAWING MUST COMPLY TO C. J. WINTER ENGINEERING STANDARD E-1058 & ASME Y14.5M 1994. UNTOLERANCED DIMENSIONS ARE BASIC

DRAWN BY:  
DWG DATE:  
ENG. APPR:  
APPR DATE:  
MATERIAL:  
HEAT TRT:



142925: Attachment Assembly


DWG SIZE SCALE: 1:4  
B Sheet1

DRAWING NO.  
142SA

6		5		4		3		2		1			
ITEM NO.	PART NO.	DESCRIPTION	QTY.	ITEM NO.	PART NO.	DESCRIPTION	QTY.	REV	ZONE	ECN	REVISION DESCRIPTION	DATE	ENG
								....	....	Released		XX/XX/XXXX	
	1	134069	Valve: Quick Exhaust	1	34	141355	Cylinder Shaft Bushing	1					
	2	141369	Quick Disconnect Plug	1	35	141360	O-Ring: 1.56 OD x 1.38 ID x 0.094 W	2	ITEM NO.	PART NO.	DESCRIPTION	QTY.	
D	3	141705	Close Nipple	1	36	140229	Wedge Roller Pin	2	62	125018	Screw: SSS, #4-40 x 0.175 HLF Dog Backer	1	D
	4	141704	Muffler	1	37	141384	Roll Arm Thrust Bushing	2	63	141363	Plunger- Adj. Knob	3	
	5	141511	Cylinder End Plate, (Poppet)	1	38	141273	Carbide Roll Pin	2	64	141364	Spring: Compression, .300 OD x .813	3	
	6	141362	Adjusting Knob	1	39	140207	Screw: SHCS, #6-32 x .250	4	65	140222	Roll Arm Spring	1	
	7	141375	Stop Nut	1	40	140232	Idler Gear Guard	2	66	141223	R. H. Roll Arm	1	
	8	160411	Adjusting Screw (Poppet)	1	41	141367	Screw: SSS, #10-32 x .50 Half Dog Pt. w/Nylon	2	67	142005	Cover Tube	4	
	9	141373	Cover Tube Washer	4	42	141394	Roll Gear w/ Heavy Duty Tang	2	68	142004	Screw: SHC, 5/16-24 x 7.62	4	
	10	160412	O-Ring Retainer	1	43	140220	Wedge Roller (.750 Dia)	2	69	142001	Cylinder Front Shaft	1	
C	11	160413	Screw: LHCS, #8-32 x .375	3	44	140234	Idler Gear	2	70	142002	Cylinder Rear Shaft	1	C
	12	160414	O-Ring: .824 OD x .546 ID x .139 W	1	45	140214	Compensator Center Guard	1	71	142003	Baffle Plate	1	
	13	141370	Quick Disconnect Plug	1	46	141389	External Gear	1	72	142006	O-Ring: 3.50 OD x 3.25 ID x .125 W	1	
	14	141351	Piston	2	47	140216	Spring Retainer	1	73	140208	Roll Arm Spring-Short (Red)	1	
	15	141390	O-Ring: 1.00 OD x 0.88 ID x 0.063 W	2	48	141378	Cover Plate	1	74	140235	Wedge, Narrow	1	
	16	141354	Retainer Nut	1	49	140233	Roll Gear Guard	2	75	140237	Wedge, Large	1	
	17	140256	O-Ring: 3.50 OD x 3.13 ID x .188 W	2	50	160054	Screw: SSS, #10-32 x .250 Half Dog Pt.	4	76	140238	Wedge, Ex-Large	1	
	18	140263	Adjusting Screw Nut	1	51	140305	Screw: SPP, 1/8-27 PTF x .250	3	77	140219	Wedge Roller (.625 Dia.)	1	
	19	141375	Stop Nut (.063 hole)	1	52	141382	Internal Gear	1	78	140221	Wedge Roller (.875 Dia.)	1	
	20	141377	Plunger Assembly	2	53	141383	Adjusting Collar	1	79	140378	Wedge Roller (.688 Dia)	1	
B	21	141358	Wedge Adapter Pin	1	54	140285	Pin Spring .188 Dia x .375	1	80	140379	Wedge Roller (.813 Dia.)	1	B
	22	141368	Screw: SSS, #8-32 x .250 Cup Pt.	2	55	141379	Screw: SHCS, #6-32 x .500	1	81	141391	Roll Arm Spring-Medium (Yellow)	1	
	23	140236	Wedge, Medium	1	56	141380	Compensator Retaining Ring 5/16 Dia.	1	<p align="center"><b>Components</b></p> <p><b>142925: Attachment Assembly- shown here</b></p> <p><b>141600: Control Valve Assembly-not shown</b></p> <p align="center"><b>Serial No. Range</b></p> <p align="center"><b>142020-Current</b></p>				
	24	141200	Roll Arm Bracket	1	57	140282	Adjusting Collar Pin	1					
	25	140257	O-Ring: 3.63 OD x 3.50 ID x .063 W	2	58	140281	Compensator Spring	2					
	26	141353	Cylinder	2	59	160086	Screw: FHSS, #6-32 x .188	1					
	27	125070	Quick Disconnect Plug	1	60	141224	L. H. Roll Arm	1					
	28	141372	Quick Disconnect Plug	1	61	160140	Pin: Spring, .063 dia x .438	1					
	29	140202	Fulcrum Pin	2									
A	30	140294	SSS 1/4-28 x .750	2									
	31	140204	Screw: SHCS, 1/4-28 x .375	2									
	32	141388	Compensator Bushing	1									
	33	140203	Key	2									

THIS DRAWING IS THE CONFIDENTIAL AND EXCLUSIVE PROPERTY OF C.J. WINTER MACHINE TECHNOLOGIES, INC. AND MAY NOT BE COPIED, REPRODUCED, OR DISCLOSED IN ANY WAY, WHATSOEVER TO ANYONE WITHOUT THE EXPRESS WRITTEN PERMISSION OF C.J. WINTER MACHINE TECHNOLOGIES, INC. UNLAWFUL DISCLOSURE MAY RESULT IN PROSECUTION © 2004 C.J. WINTER MACHINE TECHNOLOGIES, INC.

UNLESS OTHERWISE SPECIFIED: DRAWING MUST COMPLY TO C. J. WINTER ENGINEERING STANDARD E1058 & ASME Y14.5M 1994. UNTOLERANCED DIMENSIONS ARE BASIC

 .020    A    B    C    SW

DRAWN BY:  
 DWG DATE:  
 ENG. APPR:  
 APPR DATE:  
 MATERIAL:  
 HEAT TRT:



141SA Assembly

DWG SIZE SCALE: 1:4  
**B**  
 BOM  
 DRAWING NO.  
**142SA**