

6

5

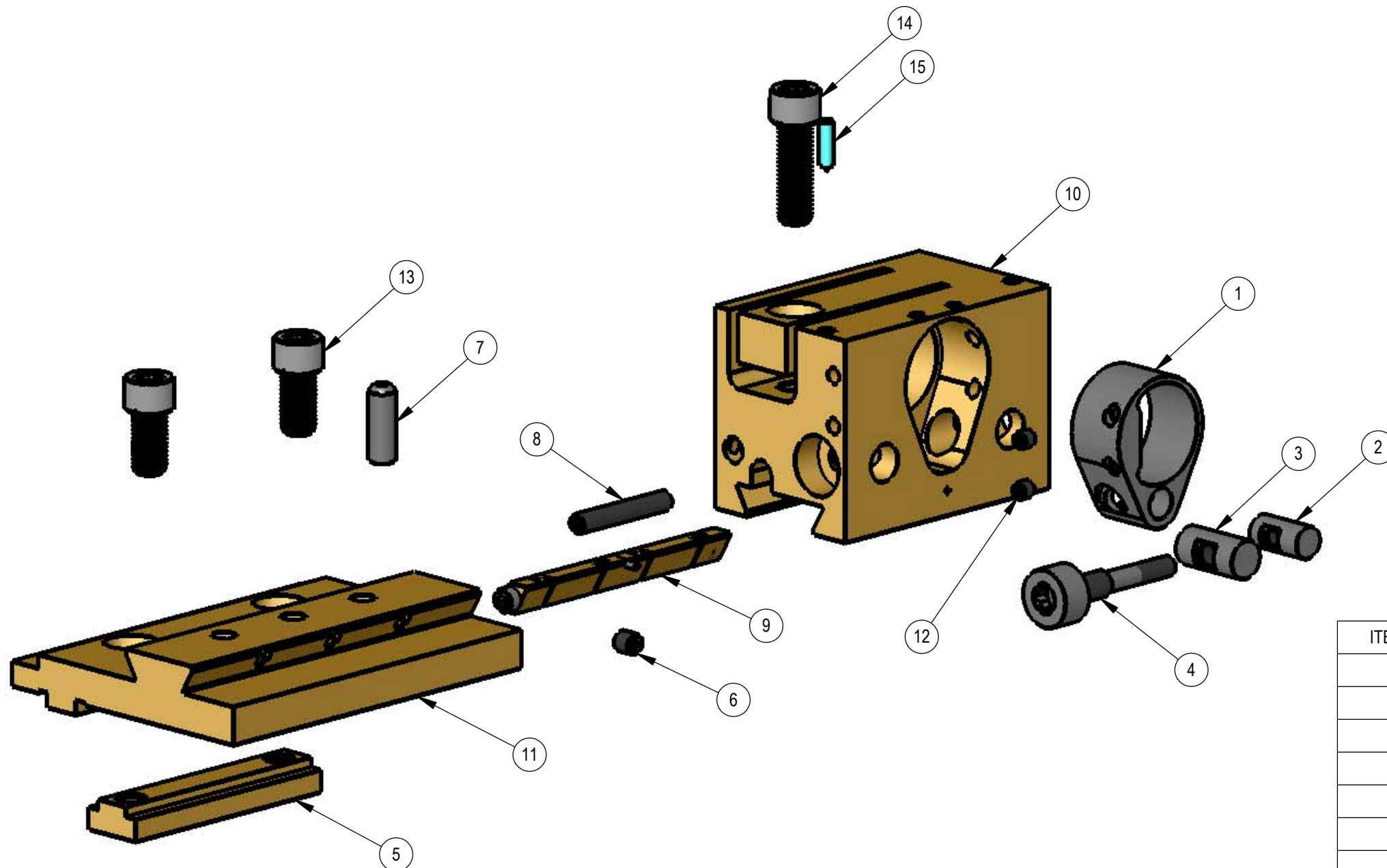
4

3

2

1

| REV | ZONE | ECN | REVISION DESCRIPTION | DATE | ENG |
|-----|------|------|----------------------|-------|-----|
| A | | | Released | 03/04 | DC |



| ITEM NO. | PART NUMBER | Description | QTY. |
|----------|-------------|---|------|
| 1 | 111006 | Taper Arm - 2nd Position | 1 |
| 2 | 111008 | Taper Pin (Arm) | 1 |
| 3 | 111009 | Taper Pin (Body) | 1 |
| 4 | 111010 | Taper Adjustment Screw | 1 |
| 5 | 111012 | Keyway Double Nut | 1 |
| 6 | 111024 | Screw: SSS, #8-32 x .250 Flat Pt. | 1 |
| 7 | 111027 | Dowel Pin .250 x .750 | 1 |
| 8 | 111029 | Screw: SSS, #10-32 x 1.25 Cup Pt. | 1 |
| 9 | 111060 | Locking Gib - 2nd Position | 1 |
| 10 | 111201 | Tool Block | 1 |
| 11 | 111203 | Adapter Plate - Wide (1st & 2nd) | 1 |
| 12 | 125043 | Screw: SSS, #8-32 x .188 Cup Pt. | 2 |
| 13 | 130046 | Screw: SHCS, 5/16-24 x .625 | 2 |
| 14 | 130047 | Screw: SHCS, 5/16-24 x 1.000 | 1 |
| 15 | NC41029 | Spring Plunger #8-32 Short, Heavy Force | 1 |

THIS DRAWING IS THE CONFIDENTIAL AND EXCLUSIVE PROPERTY OF C.J. WINTER MACHINE TECHNOLOGIES, INC. AND MAY NOT BE COPIED, REPRODUCED, OR DISCLOSED IN ANY WAY, WHATSOEVER TO ANYONE WITHOUT THE EXPRESS WRITTEN PERMISSION OF C.J. WINTER MACHINE TECHNOLOGIES, INC UNLAWFUL DISCLOSURE MAY RESULT IN PROSECUTION

UNLESS OTHERWISE SPECIFIED:
DRAWING MUST COMPLY TO
C. J. WINTER ENGINEERING
STANDARD E1058 & ASME
Y14.5M 1994. UNTOLERANCED
DIMENSIONS ARE BASIC

DRAWN BY: D. Cole
DWG DATE: 03/16/04
ENG. APPR:
APPR DATE:
MATERIAL:
HEAT TRT:



C. J. WINTER
MACHINE TECHNOLOGIES, INC.

DWG SIZE
B
SCALE: 1:1
SHEET 1 OF 1

Second Position Tool Block Assembly

DRAWING NO.
111-11

6

5

4

3

2

1