

6

5

4

3

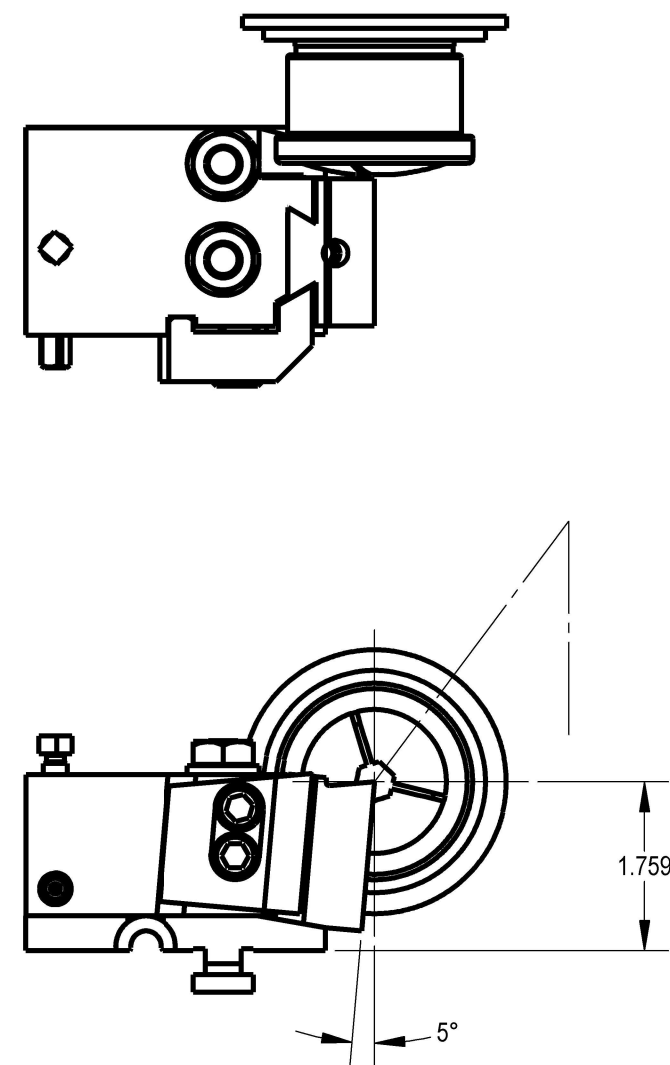
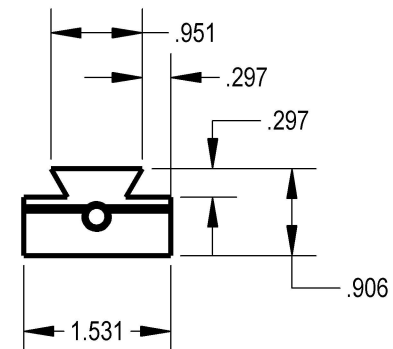
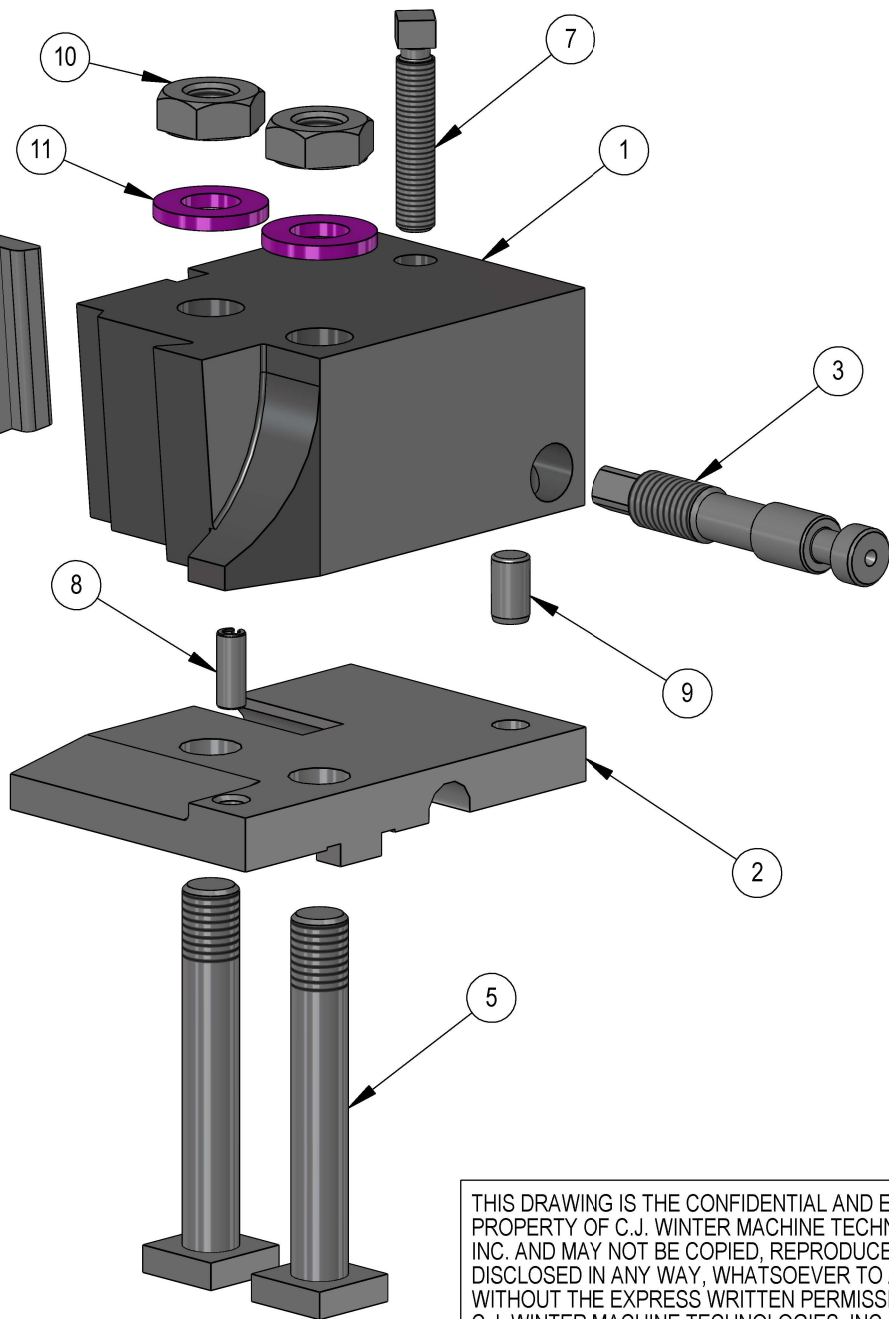
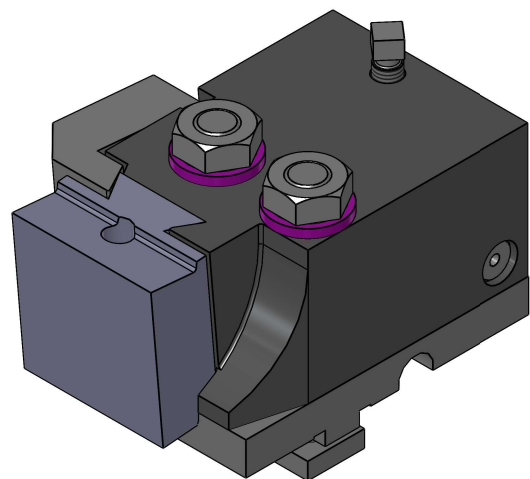
2

1

REV	ZONE	ECN	REVISION DESCRIPTION	DATE	ENG
B	Redesign of 3060-5, 3060-8 was 3060-3	06/04	DC
C			840-14 was 840-1	06/05	IDC

ITEM NO.	PART NUMBER	Description	QTY.
1	3060-5	1st Pos. Dovetail Toolholder Body 5 deg	1
2	3060-6	Rising Block	1
3	3060-7	Taper Adjustment Screw	1
4	3060-8	Clamp (Straight)	1
5	792-4	TOOL POST BOLT	2
6	834-A-4	Screw: SHCS, 5/16 - 24 x .625	2
7	837-10	Screw: SQHSS, 1/4-20 x 1.250 Cup Pt.	1
8	838-19	Pin: Spring, .188 dia x .500	1
9	838-92	Pin: Dowel, 1/4 x 7/16	1
10	840-14	Nut: Hex, 3/8-16 x 1/4 Lg x 5/8 Hex	2
11	841-6	3/8 WASHER	2
12	Tool	Not included	1

THE FIRST POSITION DOVETAIL TOOL HOLDER IS DESIGNED FOR HEAVIER FORMING OPERATIONS. THIS HOLDER IS DESIGNED WITH A 5° FACE ANGLE AND USED FOR FREE CUTTING MATERIALS, SOME GRADES OF ALUMINUM OR BRASS. THE DOVETAIL FORM TOOL IS GROUND FOR A 5° FACE ANGLE AND A DESIRED RAKE ANGLE. THE TOOL IS SET APPROXIMATELY 10% ABOVE CENTER AT THE CUTTING EDGE OF THE SMALLEST DIAMETER BEING WORKED. THE HOLDER USES AN AMERICAN STANDARD DOVETAIL BLANK GROUP 2. THE TOOL MAY BE FITTED WITH A SET SCREW (1/4-28) FOR SETTING ADJUSTMENT AND TO TAKE THE THRUST OF THE CUTING FORCE.



Not included

THIS DRAWING IS THE CONFIDENTIAL AND EXCLUSIVE PROPERTY OF C.J. WINTER MACHINE TECHNOLOGIES, INC. AND MAY NOT BE COPIED, REPRODUCED, OR DISCLOSED IN ANY WAY, WHATSOEVER TO ANYONE WITHOUT THE EXPRESS WRITTEN PERMISSION OF C.J. WINTER MACHINE TECHNOLOGIES, INC UNLAWFUL DISCLOSURE MAY RESULT IN PROSECUTION

UNLESS OTHERWISE SPECIFIED:
DRAWING MUST COMPLY TO
C. J. WINTER ENGINEERING
STANDARD E1058 & ASME
Y14.5M 1994. UNTOLERANCED
DIMENSIONS ARE BASIC

DRAWN BY: D. Cole
DWG DATE: 06/01/04
ENG. APPR:
APPR DATE:
MATERIAL:
HEAT TRT:



C. J. WINTER
MACHINE TECHNOLOGIES, INC.

DWG SIZE
B
SCALE: 1:1
SHEET 1 OF 1

1st Position Dovetail Toolholder 5 Deg

DRAWING NO.
3060-5-SA

6

5

4

3

2

1