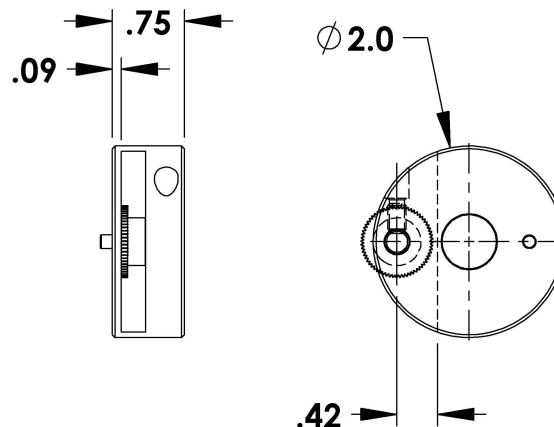
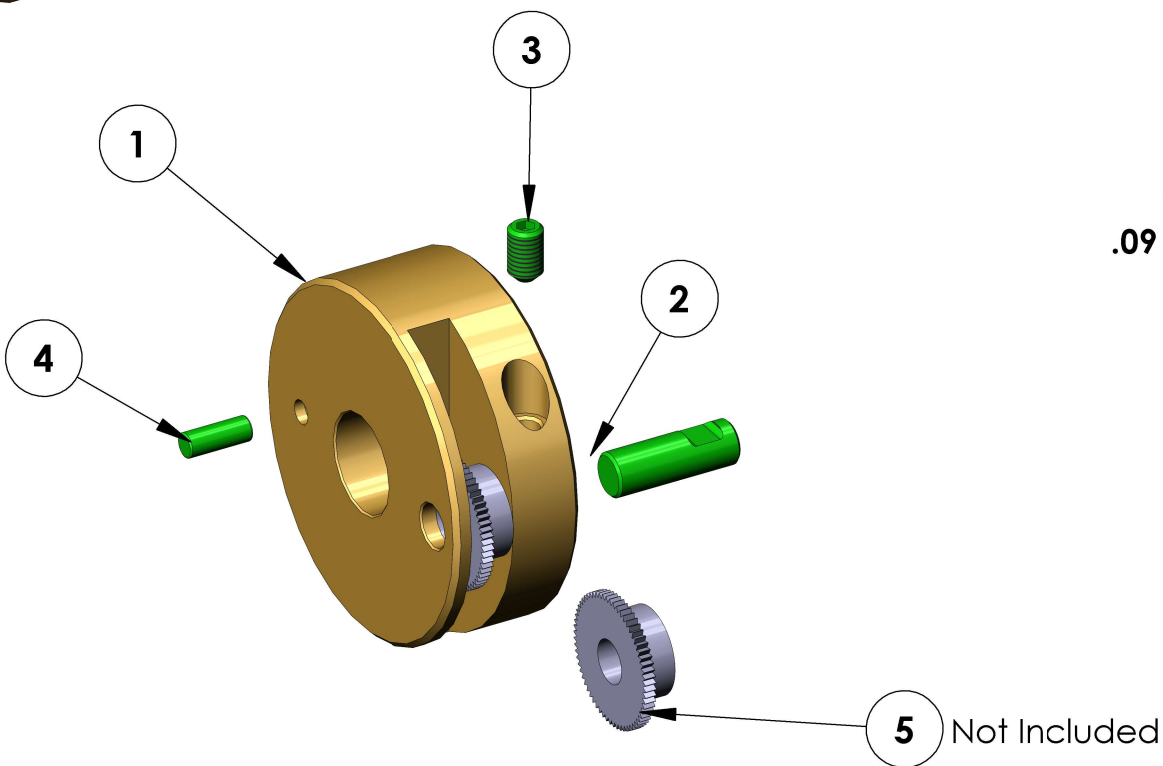
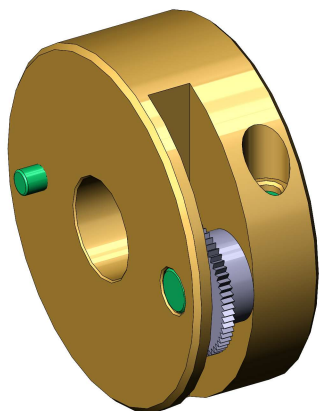


THE SINGLE KRURL ROLL HOLDER IS USED FOR BUMP KNURLING IN THE 2ND, 3RD OR 4TH POSITION.

REV	ZONE	ECN	REVISION DESCRIPTION	DATE	ENG
A	Was cone point	03/89	PFB
B	Updated Old Davenport Part #'s	07/94	WK
C	Redrawn on CAD	07/95	PA

ITEM NO.	PART NUMBER	DESCRIPTION	QTY.
1	2729-1	Knurl Tool Holder	1
2	2729-25	Carbide Roll Pin	1
3	836-1	Screw: SSS, #10-32 x 0.313 Cup Pt.	1
4	838-94	Pin: Dowel, 0.141 Dia x 0.375	1
5	.625 OR .750 DIA. Knurl .250 Wide x .250 I.D.	Not Included	2



THIS DRAWING IS THE CONFIDENTIAL AND EXCLUSIVE PROPERTY OF C.J. WINTER MACHINE TECHNOLOGIES, INC. AND MAY NOT BE COPIED, REPRODUCED, OR DISCLOSED IN ANY WAY, WHATSOEVER TO ANYONE WITHOUT THE EXPRESS WRITTEN PERMISSION OF C.J. WINTER MACHINE TECHNOLOGIES, INC UNLAWFUL DISCLOSURE MAY RESULT IN PROSECUTION
© 2004 C.J. WINTER MACHINE TECHNOLOGIES, INC.

UNLESS OTHERWISE SPECIFIED:
DRAWING MUST COMPLY TO
C. J. WINTER ENGINEERING
STANDARD E1058 & ASME
Y14.5M 1994. UNTOLERANCED
DIMENSIONS ARE BASIC

	.020	A	B	C	SW
--	------	---	---	---	----

DRAWN BY: EA
DWG DATE: 3/26/2024
ENG. APPR:
APPR DATE:
MATERIAL:
HEAT TRT:



C. J. WINTER
MACHINE TECHNOLOGIES, INC.

DWG SIZE
A
SCALE: 1:2
Sheet1

KNURL HOLDER, 3/8 WIDE

DRAWING NO.
2729-SA