



# CJWINTER

## Model 111 Shave Tool

**Micro Taper Adjust Mechanism – Patent Pending**

**Made in the USA**

The Model 111 Shave Tool has been engineered by CJWinter® for a single purpose: to assure outstanding quality in every piece you shave. With a new lower profile than its predecessor, the Model 108 Shave Tool, the Model 111 allows for increased clearance between the 2nd and 3rd positions. It is also far superior to competitive shave tools in rigidity and tool life.

CJWinter tool holders are designed to be operator friendly and easily adjustable. They are also more versatile and modular than other shave tools available on the market today. Our tools provide for close tolerances and reduced chatter on the work piece.

*Modular taper arm works in conjunction with taper adjust mechanism and also allows mounting of shave tool in multiple positions.*

*Locking gib allows for a quick change and secure locking of entire shave tool and block assembly.*

*Expansion gib and zero clearance matched assembly allows for a more rigid running mechanism and virtually eliminates chatter.*

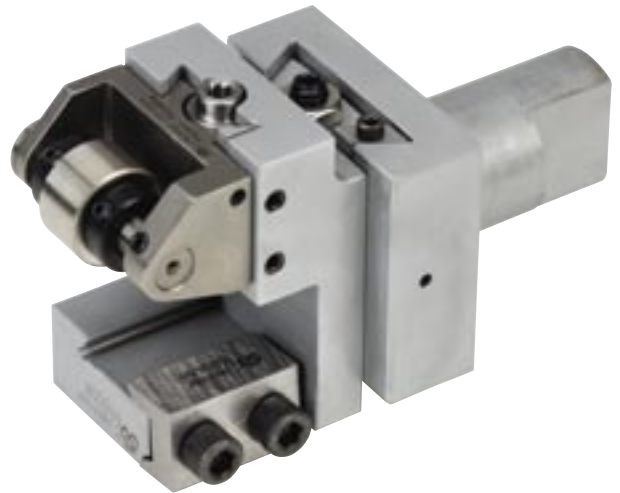
*Center and inboard brackets to cover entire range (.000 - .843 inches) are provided as standard equipment on the 111 Shave Tool. The center bracket is used for most applications and supports rolls at both ends providing superior rigidity. The inboard bracket is used when the part geometry requires the support roll to be close to the spindle.*



# Model 111 Shave Tool

## Features

- 1/2" or 5/8" dovetail tooling can be accommodated with our reversible clamp mechanism
- Reduced height by at least 1/2" over 108 and other shave tools  
*Increased clearance between 2nd & 3rd positions*
- Clamping dovetail on roll holder brackets  
*Increased rigidity over boxway slide on 108*
- Running dovetail w/ expansion gib  
*Increased rigidity reduces chatter*
- "High-performance coatings"  
*Same as CJWinter 132 Reversible Slide*  
*Increased wear life for running surfaces*
- Micro Taper Adjust Mechanism – Patent Pending  
*.0001" change in diameter for every*  
*"click" on taper adjust screw*
- Quick-Change Adapter Plate
  - Full width adapter plate never needs to be removed
  - Locking expansion gib
  - Fine "In/Out" adjustment
  - Repeatability of location
- Modular mounting configurations are designed specifically for a Davenport Machine
- Standard size 1" shank fits 3/4" diameter machines such as lathes, mills, Davenports, and many others ...
- Two roll holder brackets accommodate entire range of diameters for shave tool and dovetail locking clamp allows added rigidity over boxway slides



## For Model 108 Users:

**2 roll brackets versus 6 on 108**  
*Pins & Rollers same as 108*

**111 Shave Tool will fit any 108 Toolblocks**  
*Gives benefits of increased rigidity, reduced chatter, and longer wear life*

**108 Shave Tool will fit any 111 Toolblocks**  
*Gives benefits of micro taper adjust and quick change*

## END ROLLING



## PNEUMATIC



## THREAD ROLLS



## TANGENTIAL



## TOOL HOLDERS AND SLIDES



167 Ames Street • Rochester, NY 14611 USA  
1-800-288-ROLL (7655) • Phone (585) 429-5000 • FAX (585) 429-5095  
E-mail: sales@cjwinter.com • www.cjwinter.com

© 2005 CJWinter. CJWinter is a registered trademark of Brinkman Products, Inc. 111 1-05  
Patent Pending